

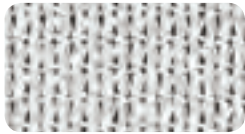
RAINBOW SHADE

eXtreme 32

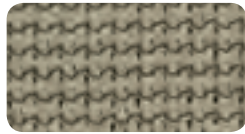


EXCEPTIONAL STRENGTH & PROTECTION

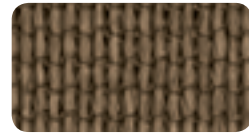
Summer 2017 Collection



Quartz
UVR BLOCK 89.5%
SHADE 78.4%



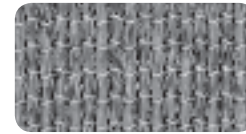
Hazel
UVR BLOCK 93.7%
SHADE 91.2%



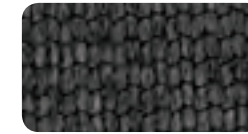
Cinnamon
UVR BLOCK 91.4%
SHADE 89.4%



Desert Sand
UVR BLOCK 92.4%
SHADE 91.2%



Silver
UVR BLOCK 91.5%
SHADE 91.2%



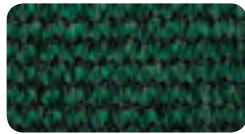
Charcoal
UVR BLOCK 95.3%
SHADE 94.7%



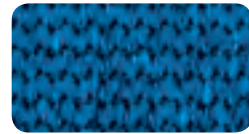
Black
UVR BLOCK 95.7%
SHADE 95.3%



Navy Blue
UVR BLOCK 95.8%
SHADE 94.4%



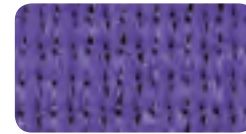
Rainforest
UVR BLOCK 93.1%
SHADE 90.7%



Royal Blue
UVR BLOCK 91.7%
SHADE 86.1%



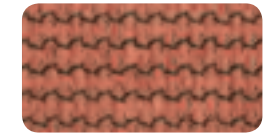
Zesty Lime
UVR BLOCK 91.1%
SHADE 84.5%



Electric Purple
UVR BLOCK 91.9%
SHADE 88.4%



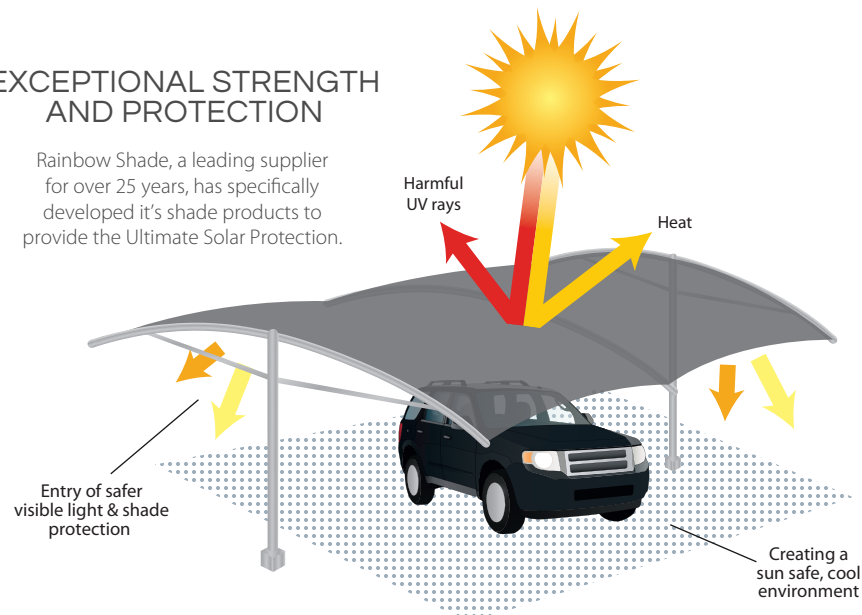
Sunset Red
UVR BLOCK 93%
SHADE 83.7%



Terracotta
UVR BLOCK 92.7%
SHADE 92.7%

EXCEPTIONAL STRENGTH AND PROTECTION

Rainbow Shade, a leading supplier for over 25 years, has specifically developed its shade products to provide the Ultimate Solar Protection.



EXTREME STRENGTH
(DESIGNED FOR LARGE SPANS)

HIGH UV-R PROTECTION
(UP TO 95.8%)

HIGH TEAR RESISTANCE

GREAT HEAT & GLARE REDUCTION

EASY CARE MAINTENANCE

FIRE RATED FABRIC
AS-1530.3

ENDURING DURABILITY & LONGEVITY

RESILIENT DIMENSIONAL STABILITY

Suggested Specification

Shade cloth fabric will be compliant to Australian Standard 4174 and must be **Extreme 32** HDPE knitted extra heavy duty shade fabric with a monofilament and tape construction for maximum solar protection.

Technical properties

Weight: 320 GSM Width: 3 metres Roll length 33 metres

Strength Characteristics	Result	Standard
Breaking force -warp	717 N/50mm	AS2001.2.3.1-2001
Breaking force - weft	1721 N/50mm	AS2001.2.3.1-2001
Elongation at break - warp	44.7 %	AS2001.2.3.1-2001
Elongation at break - weft	54.9 %	AS2001.2.3.1-2001
Tear resistance - warp	179 N	AS2001.2.10-1986
Tear resistance - weft	243 N	AS2001.2.10-1986
Bursting pressure	3400 kPa	AS2001.2.4 -1990 Hydraulic Diaphragm
Bursting force	1970 N	AS2001.2.19-1998 Steel Ball

Flame Retardancy	Result	Standard
Ignitability index	15	AS1530.3-1999
Spread of flame index	8	AS1530.3-1999
Heat evolved index	4	AS1530.3-1999
Smoke developed index	5	AS1530.3-1999
Flammability index	19 (range 0-100)	AS1530.2.1993
Spread of flame	15	AS1530.2.1993
Heat factor	2	AS1530.2.1993

Solar Protection Properties	Cover Factor %	Average Transmission 290-770nm%	Shade Factor %	Average UVR Transmittance 290-400nm %	Average PAR Transmittance 400-700 nm %	% UVR Block
Quartz	89.3	21.6	78.4	10.5	23.6	89.5
Hazel	93.8	8.8	91.2	6.3	8.9	93.7
Cinnamon	91.5	10.6	89.4	8.6	10.6	91.4
Desert Sand	92.7	8.8	91.2	7.62	8.79	92.4
Silver	92.1	8.77	91.2	8.47	8.9	91.5
Charcoal	95.2	5.3	94.7	4.7	5.48	95.3
Black	95.7	4.72	95.3	4.27	4.87	95.7
Navy Blue	95.6	5.61	94.4	4.21	6.13	95.8
Rainforest	93.4	9.32	90.7	6.95	9.55	93.1
Royal Blue	92.2	13.95	86.1	8.29	16.61	91.7
Zesty Lime	91.2	15.5	84.5	8.9	15.9	91.1
Electric Purple	92.3	11.6	88.4	8.1	10.8	91.9
Sunset Red	92.9	16.3	83.7	7	14.7	93
Terracotta	92.7	7.31	92.7	7.32	7.37	92.7