

COMPONENTS

magnetic fasteners

Catalogue 1 / 3

FIDLOCK Components

We define „components“ as all products that are not ready for sale retail products*. The FIDLOCK components range is structured into three areas. These are divided into individual catalogues for a better overview, but are all equally part of our overall component portfolio:

Components – magnetic fasteners (catalogue 1 of 3)

Magnetic-mechanical fasteners, buckles and attachments

Components – BIKE OEM (catalogue 2 of 3)

Magnetic-mechanical components for bicycles

Components – HERMETIC OEM (catalogue 3 of 3)

Water- and dustproof fastening elements and sew-in pockets

* Retail products are listed in our retail catalogues (BIKE Retail , HERMETIC Retail)



FIDLOCK - the new generation of fasteners

FIDLOCK was founded with a specific goal: revolutionizing even long-established concepts by developing easy-to-use and trend-setting magnetic-mechanical fasteners in an appealing design. Our innovative fasteners are based on the unique FIDLOCK concept and offer new dimensions of functionality, safety and fun. Users are convinced straight away by the great ease of use, ergonomic features, as well as the classy and robust processing of the components. In daily routines, FIDLOCK fasteners offer qualities which have never been achieved before: they close automatically and are suitable for easy, one-handed operation – even with gloves. This advantage is particularly appreciated during sporting activities, offering a spare hand to ensure the user's safety. The FIDLOCK concept combines great reliability with the simplest and pleasant method of opening and closing a fastener: a maximum level of comfort, convenience, security, function and fun.

FIDLOCK's current repertoire offers product developers and designers a large range of innovative, magnetic fasteners in thirteen product families. Appropriate solutions for a wide range of application areas and individual design concepts are available. Considering the large selection of styles and materials, as well as individualization opportunities, product designers do not have to make any compromises when using FIDLOCK fasteners. They are not only based on a multiple award-winning and unique concept but also complement and refine our customer's products with convincing quality features. As a result, innovative product lines with additional value emerge. No matter whether FIDLOCK fasteners are applied on top-quality pieces of furniture, bags, backpacks, helmets or other sport and lifestyle branded articles – users are thrilled by the design and the secure hold of the fastening concepts with single-handed operation.

Award-winning technology - the FIDLOCK concept

Our product portfolio is based on a one-of-a-kind, patented, magnetic-mechanical fastener technology: the FIDLOCK concept. It combines neodymium magnets with a snap mechanism. One important feature of our FIDLOCK fasteners is that the opening procedure differs from the closing procedure. When closing, the magnets are moved towards each other, due to the attractive force, and are automatically securely locked when they connect, thanks to the mechanical snap functionality. Depending on the product group or concept, FIDLOCK fasteners are easily opened by sliding laterally, tilting or rotating.

Thanks to the FIDLOCK concept, our innovative methods combine the advantages of a magnetic and a snap fastener in a way that has never been achieved before: strong magnets make them easy to close and secure and the mechanical engagement ensures a continuously high locking force.

The buckles and fasteners listed here are not suitable for safety related applications unless explicitly indicated in the field "note". If you are unsure whether the buckle you have chosen is suitable for your application, please do not hesitate to contact us either by e-mail: info@fidlock.com or by phone: +4951196159310.

User information: Please note it is possible for dirt (e.g. metal splinters) to get stuck to the buckles and thus hinder it from closing correctly. Please advise your customers that the buckle should be free from dirt in order to guarantee perfect functionality.

CONTENTS

Product	Page
COINTRAP Information COINTRAP	8
COINTRAP helmet 15 UN 07072-000002 (BLK)	9
COINTRAP helmet 15 UN divider 07076-000011 (BLK)	9
COINTRAP male M UN 07072-M00002 (BLK)	9
COINTRAP male M UN high 07072-M10002 (BLK)	10
COINTRAP female M 15 SB 07070-F00002 (BLK)	10
COINTRAP female M 20 adjuster V 07077-F00002 (BLK)	10
COINTRAP female M sewable 07078-F00002 (BLK)	11
PINCLIP Information PINCLIP	12
PINCLIP M FA-10011-000002 (BLK) + A-10100-000002 (BLK)	13
PINCLIP M integrated FA-10200-000011 (BLK) + A-10001-000001 (BLK)	13
PINCLIP M integrated vertical FA-10200-000011 (BLK) + A-10002-000002 (BLK)	13
MINI TURN Information MINI TURN	14
MINI TURN set handle A 50 02010-000012 (BLK)	15
MINI TURN set handle B 50 02020-000012 (TBL)	15
MINI TURN set handle C alu 40 02045-000012 (ALU)	15
MINI TURN set handle C alu 50 02040-000012 (ALU)	16
MINI TURN set handle D 50 02030-000012 (BLK)	16
MINI TURN set handle F alu 40 02055-000022 (ALU)	16
MINI TURN set handle F alu 50 02050-000022 (ALU)	17
SLIDER Information SLIDER	4
SLIDER 25 04010-000032 (BLK)	4
SLIDER 25 stst shield F4050-000002 (BLK)	4
SLIDER 25 plastic shield F4060-000012 (BLK)	4
SLIDER 40 F4100-000002 (BLK)	4
SLIDER 40 double LL F4110-000002 (BLK)	4
SNAP Information SNAP	18
SNAP male S screw low F5010-000002 (BLK)	19
SNAP male S screw mid 05715-000002 (BLK)	19
SNAP male S screw high 05020-000002 (BLK)	19
SNAP male S screw brass (Alu) low 05033-002002 (ALM)	20

Product	Page
SNAP male S screw brass (Alu) high 05034-002002 (ALM)	20
SNAP male S screw low alu 05043-000002 (ALM)	20
SNAP male S screw high alu 05044-000002 (ALM)	21
SNAP male S sewable 05451-000002 (BLK)	21
SNAP male S sewable adjuster 05455-000002 (BLK)	21
SNAP male S 6 springcap 05061-000012 (BLK)	22
SNAP male S 10 springcap 05063-000012 (BLK)	22
SNAP male S add on 05003-000002 (BLK)	22
SNAP male S rope 05047-000002 (BLK)	23
SNAP male M bolt - M5 x 8mm 05150-100002 (BLK)	23
SNAP male M bolt - M5 x 8mm 05150-100002 (ALM)	23
SNAP male M bolt - M5 x 18mm 05151-100002 (BLK)	24
SNAP male M bolt - M5 x 18mm 05151-100002 (ALM)	24
SNAP male M 25 adjuster 05131-000002 (BLK)	24
SNAP male M 25 adjuster split bar 05130-000002 (BLK)	25
SNAP male M 50 adjuster 05761-M00001 (BLK)	25
SNAP male M screw low 05122-000002 (BLK)	25
SNAP male M screw high 05123-000002 (BLK)	26
SNAP male M retractable screw 05282-000002 (BLK)	26
SNAP male M retractable anchor 05281-000001 (BLK)	26
SNAP male M sewable 05453-000012 (BLK)	27
SNAP male L bolt - M5 x 7mm 05155-100002 (BLK)	27
SNAP male L bolt - M5 x 7mm 05155-100002 (ALM)	27
SNAP male L bolt - M5 x 17mm 05156-100002 (BLK)	28
SNAP male L bolt - M5 x 17mm 05156-100002 (ALM)	28
SNAP male L 25 adjuster 05099-000002 (BLK)	28
SNAP male L 25 adjuster split bar 05299-000002 (BLK)	29
SNAP male L screw low 05007-000002 (BLK)	29
SNAP male L screw high 05008-000002 (BLK)	29
SNAP male L screw cap 05009-000002 (BLK)	30
SNAP male L tube clip 05232-000002 (BLK)	30

CONTENTS

Product	Page
SNAP male L 40 - RLS 05250-000002 (BLK)	30
SNAP male L retractable 05270-000002 (BLK)	31
SNAP male L sewable 05454-000012 (BLK)	31
SNAP male L sewable SB 20 F5421-000002 (BLK)	31
SNAP female S screw low 05100-000022 (BLK)	32
SNAP female S screw high 05200-000022 (BLK)	32
SNAP female S sewable 05450-000002 (BLK)	32
SNAP female S round rivet 05140-000002 (BLK)	33
SNAP female S rivet V 05300-000002 (BLK)	33
SNAP female S rivet H 05400-000002 (BLK)	33
SNAP female S screw cap 05103-000022 (BLK)	34
SNAP female S 15 adjuster H 05452-000002 (BLK)	34
SNAP female S pin rivet X2 05311-000002 (BLK)	34
SNAP female S pin rivet X3 05310-000002 (BLK)	35
SNAP female S 20 Leather 05197-000002 (BLK)	35
SNAP female M screw 05500-000002 (BLK)	35
SNAP female M inset screw 05511-000002 (BLK)	36
SNAP female M inset anchor 05512-000001 (BLK)	36
SNAP female L screw 05600-000002 (BLK)	36
SNAP female L screw extra grip 05605-000002 (BLK)	37
SNAP pull Information SNAP pull	39
SNAP pull female S rivet 05017-000002 (BLK)	40
SNAP pull female M rivet 05110-000012 (BLK)	40
SNAP pull female M 25 adjuster 05118-000002 (BLK)	40
SNAP pull female M 25 adjuster split bar 05119-000002 (BLK)	41
SNAP pull female L 05180-000002 (BLK)	41
SNAP push Information SNAP push	42
SNAP push female S 15 SB F5108-000002 (BLK)	43
SNAP push female S 15 LL F5104-000002 (BLK)	43
SNAP push female S 20 LL F6040-000002 (BLK)	43
SNAP push female M 25 LL F5120-000002 (BLK)	44

Product	Page
SNAP push female L 25 LL F5005-000012 (BGR)	44
SNAP push female L fabric mount F5015-000022 (BLK)	44
SNAP buckle Information SNAP buckle	45
SNAP buckle 15 F6020-000002 (BLK)	46
SNAP buckle 20 F6021-000002 (BLK)	46
SNAP buckle 20 RC F6021-000002 (5415)R	46
SNAP buckle 20 RC F6021-000002 (BLK)R	47
SNAP buckle combi 15 F6010-000002 (BLK)	47
SNAP buckle combi 20 F6011-000002 (BLK)	47
SNAP buckle piping 15 F6030-000002 (BLK)	48
SNAP buckle flat 20 softline RC F8090-000001 (BLK)R	48
SNAP buckle flat 25 F8040-000042 (BLK)	48
SNAP buckle flat 30 F8010-000012 (BLK)	49
SNAP buckle flat 40 F8022-000002 (BLK)	49
SNAP buckle flat 40 with reed switch 08027-000011 (BLK)	49
SNAP buckle flat 25 electrified 75cm with plug F8043-001301 (BLK)	50
SNAP helmet buckle Information SNAP helmet buckle	52
SNAP helmet buckle 15 durethan F7020-001022 (BLK)	53
SNAP helmet buckle 20 durethan F7021-000002 (BLK)	53
SNAP helmet buckle 15 grivory F7024-000002 (BLK)	53
SNAP helmet buckle 20 grivory F7026-000002 (BLK)	54
SNAP helmet buckle 15 shaped durethan F7030-000002 (BLK)	54
SNAP helmet buckle 15 shaped grivory F7031-000002 (BLK)	54
SNAP helmet buckle 15 shaped broad durethan F7032-000002 (BLK)	55
SNAP helmet buckle 15 shaped broad grivory F7033-000002 (BLK)	55
SNAP helmet buckle 15 shaped broad durethan with anti-slip part F7035-000002 (BLK)	55
SNAP helmet buckle 15 shaped broad grivory with anti-slip part F7036-000002 (BLK)	56
SNAP helmet buckle anti-slip part for 15 shaped broad 07037-000002 (BLK)	56
SNAP helmet buckle 15 dynamic techline F7045-000001 (BLK)	56
HOOK Information HOOK	57

CONTENTS

Product	Page
HOOK 15 helmet buckle 01202-000042(BLK)	58
HOOK 15 helmet buckle long D-ring 01215-000022(BLK)	58
HOOK 15 helmet buckle pull tab 01239-000062(BLK)	58
HOOK 15 helmet buckle LL F1665-000002(BLK)	59
HOOK 15 FW sewable 01266-000032(BLK)	59
HOOK 20 helmet buckle F1208-000162(BLK)	59
HOOK 25 alu motorbike 01259-000003(BLK)	60
HOOK 25 plastic 01249-000002(BLK)	60
HOOK 25 plastic open d-ring 01249-000072(BLK)	60
HOOK 25 plastic open d-ring RC 01249-000072(5415)R	61
HOOK 25 plastic open d-ring RC 01249-000072(BLK)R	61
HOOK 20 sternum strap 01256-000002(BLK)	61
HOOK 25 rivet 01260-000012(BLK)	62
HOOK 40 alu 01218-000002(ALB)	62
HOOK 40 adjuster ortho 01219-000002(BLK)	62
HOOK 40 adjuster 01251-000202(BLK)	63
HOOK 40 tough 01258-000011(BLK)	63
HOOK 25 belt LL 01238-000002(BLK)	63
HOOK belt 25x3 01216-000002(BLK)	64
HOOK belt 25x3 01216-000002(DEA)	64
HOOK belt 25x3 01216-000002(DGY)	64
HOOK belt 25x3 01216-000002(MOL)	65
HOOK 40 belt 01235-000002(BLK)	65
HOOK 40 belt LL 01237-000002(BLK)	65
HOOK 25 reverse F1200-000002(BLK)	66
HOOK 25 reverse LL 01290-000002(BLK)	66
HOOK 20 flat F1211-000002(BLK)	66
HOOK 20 flat sewable F1229-000002(BLK)	67
HOOK 20 flat adjuster F1228-000002(BLK)	67
HOOK 20 rope F1204-000022(BLK)	67
HOOK 20 rope sewable F1226-000002(BLK)	68

Product	Page
HOOK 20 rope sewable RC 01226-000002(5415)R	68
HOOK 20 rope sewable RC 01226-000002(BLK)R	68
HOOK 20 rope sewable X3 F1241-300002(BLK)	69
HOOK 20 rope adjuster F1227-000002(BLK)	69
HOOK 20 tanka sewable X3 F1650-000002(BLK)	69
HOOK toggle latch 01291-000001(BLK)	70
V-BUCKLE Information V-BUCKLE	71
V-BUCKLE 20 + pull tab FV-14210-000002(BLK)	72
V-BUCKLE 20 black flap + pull tab FV-14410-000002(BLK)	72
V-BUCKLE 20 black flap + pull tab glow in the dark FV-14410-000002(GITD)	72
V-BUCKLE 25 + pull tab FV-11201-000002(BLK)	73
V-BUCKLE 25 black flap + pull tab FV-11401-000002(BLK)	73
V-BUCKLE 25 SB/LL + pull tab FV-15213-000002(BLK)	73
V-BUCKLE 25 SB black flap + pull tab FV-15401-000002(BLK)	74
V-BUCKLE 25 sandblasted flap + pull tab RC FV-11601-000002(5415)R	74
V-BUCKLE 25 black flap + pull tab RC FV-11401-000002(BLK)R	74
V-BUCKLE 25 LL black flap + pull tab FV-11413-000002(BLK)	75
V-BUCKLE 25 split bar + pull tab FV-11202-000002(BLK)	75
V-BUCKLE 25 split bar black flap + pull tab FV-11402-000002(BLK)	75
V-BUCKLE 25 swivel mount + pull tab FV-11209-000002(BLK)	76
V-BUCKLE 25 swivel mount black flap + pull tab FV-11409-000002(BLK)	76
V-BUCKLE sewable 25 + pull tab FV-11203-000002(BLK)	76
V-BUCKLE sewable 25 black flap + pull tab FV-11403-000002(BLK)	77
V-BUCKLE sewable 40 SB + pull tab FV-13203-000002(BLK)	77
V-BUCKLE sewable 40 SB black flap + pull tab FV-13403-000002(BLK)	77
V-BUCKLE sewable 40 + pull tab FV-12203-000002(BLK)	78
V-BUCKLE sewable 40 black flap + pull tab FV-12403-000002(BLK)	78
V-BUCKLE 40 SB + pull tab FV-13208-000002(BLK)	78
V-BUCKLE 40 SB black flap + pull tab FV-13408-000002(BLK)	79
V-BUCKLE 40 LL + pull tab FV-12207-000002(BLK)	79
V-BUCKLE 40 LL black flap + pull tab FV-12407-000002(BLK)	79

CONTENTS

Product	Page
V-BUCKLE <i>S 15 SB + pull tab</i> FV-26211-000012(BLK)	80
V-BUCKLE <i>S 15 SB black flap + pull tab</i> FV-26411-000012(BLK)	80
V-BUCKLE <i>S 20 SB + pull tab</i> FV-27212-000012(BLK)	80
V-BUCKLE <i>S 20 SB black flap + pull tab</i> FV-27412-000012(BLK)	81
STRIPE Information STRIPE	82
STRIPE <i>X3</i> 01310-000002(BLK)	83
STRIPE <i>X3 flex</i> 01312-000002(BLK)	83
STRIPE <i>slim X5</i> F1341-000002(BLK)	83
STRIPE <i>slim X5 SE</i> F1342-000012(BLK)	84
STRIPE <i>X5 flex</i> 01343-000002(BLK)	84
STRIPE <i>FW SB20</i> F1370-000002(BLK)	84
STRIPE <i>FW DR20</i> F1371-000002(BLK)	85
STRIPE <i>FW rope</i> F1390-000002(BLK)	85
STRIPE <i>FW rope RC</i> F1390-000002(5415)R	85
STRIPE <i>FW rope RC</i> F1390-000002(BLK)R	86
STRIPE <i>X1 underlay</i> 01362-000001(BLK)	86
STRIPE <i>X1 overlay</i> 01363-000002(BLK)	86
WINCH Information WINCH	87
WINCH <i>momentum left</i> F1500-L00012(BLK)	88
WINCH <i>momentum right</i> F1500-R00012(BLK)	88
WINCH <i>momentum left clip-in base</i> F1560-L00012(BLK)	88
WINCH <i>momentum right clip-in base</i> F1560-R00012(BLK)	89
WINCH <i>elegance left</i> F1510-L00002(BLK)	89
WINCH <i>elegance right</i> F1510-R00002(BLK)	89
WINCH <i>elegance left clip-in base</i> F1550-L00002(BLK)	90
WINCH <i>elegance right clip-in base</i> F1550-R00002(BLK)	90
WINCH <i>compact left</i> F1520-L00022(BLK)	90
WINCH <i>compact right</i> F1520-R00022(BLK)	91
WINCH <i>diameter reduction plate</i> 01520-DP0002(21C)	91
WINCH <i>compact left clip-in base</i> F1540-L00022(BLK)	91
WINCH <i>compact right clip-in base</i> F1540-R00022(BLK)	92

Product	Page
JUNIOR Information JUNIOR	93
JUNIOR <i>slide 3-point single action</i> F5170-000012(BLK)	94
JUNIOR <i>slide 3-point double action</i> F5171-000012(BLK)	94
JUNIOR <i>slide 5-point single action</i> F5175-000002(BLK)	94
JUNIOR <i>slide 5-point double action</i> F5176-000002(BLK)	95
JUNIOR <i>press 3-point lock</i> F9420-000022(BLK)	95
JUNIOR <i>press 5-point loop</i> F9421-000022(BLK)	95
JUNIOR <i>press 5-point loop 30mm</i> F9422-000022(BLK)	96
SPECIALS Information SPECIALS	97
SPECIALS <i>SNAP stackable S</i> 09210-000001(BLK)	98
SPECIALS <i>SNAP stackable M</i> 09211-000001(BLK)	98
SPECIALS <i>SNAP stackable L</i> 09212-000001(BLK)	98



COINTRAP fasteners - lightweight, strong, one-handed & flexible

Our COINTRAP product family captivates with many features. The COINTRAP helmet buckle is the most lightweight magnetic-mechanical fastening solution for helmets by FIDLOCK, weighing less than 8 grams! Compact design, firm hold, flexibility and comfort are all combined in the COINTRAP product family. The male part remains rotatable when the fastener is closed, going along with every move you make - a great feature, especially for helmets. Naturally, other application areas also benefit from the COINTRAP, turning the moment of opening and closing into a fun experience.

Patents: Our COINTRAP fasteners are a unique solution for flexible, strong and one-handed fastening. Therefore, products of the COINTRAP family are protected by at least one of the following patents:

DE102021213554B3, CN218605352U, DE102021213555B3,
DE102021213556B3, DE102021213558B3

You can find detailed and updated information on fidlock.com/en/patents.

COINTRAP

COINTRAP helmet 15 UN

07072-000002 (BLK)

New



Webbing width
15 mm
Weight
ca. 7,4 g
Dimensions (L×W×H)
39,5 × 27 × 10,6 mm
Dimensions
22,1 mm (Ø male part)
Material
PA66GF
Static breaking load
70 kg
Colour
black
Assembly
sewing, strap, single bar

Sector
helmets

- # Very lightweight helmet buckle
- # Combines strong fastening with small size
- # Male part remains rotatable when the fastener is closed
- # Single-handed closing for helmets and other application areas

Note
Use in safety-relevant applications such as helmet straps is subject to the approval of the attachment by FIDLOCK.
Not suitable for the safety-related use on motorcycle helmets or equestrian helmets.

COINTRAP helmet 15 UN divider

07076-000011 (BLK)

New



Opening mechanism
lift
Webbing width
15 mm
Weight
8,70 g
Dimensions (L×W×H)
50,2 × 48,6 × 10,2 mm
Material
PA6 GF/CF, PA66 GF, NdFeB, Epoxy
Colour
black

Sector
helmets, professionals, sports

- # Female part combines two parts in one: divider and female part
- # Large contact area with two undercuts guarantees secure fastening
- # Male part remains rotatable when closed
- # One-handed closing for helmets

Note
Use in safety-relevant applications such as helmet straps is subject to the approval of the attachment by FIDLOCK.
Not suitable for the safety-related use on motorcycle helmets or equestrian helmets.

COINTRAP male M UN

07072-M00002 (BLK)

New



Opening mechanism
lift
Weight
2,50 g
Dimensions
22,1 mm (Ø male part)
Material
PA66GF, NdFeB, epoxy
Colour
black

Sector
apparel, bags, professionals

- # Male part remains rotatable when the fastener is closed
- # Compatible with female part: 07070-F00002 (BLK) COINTRAP 15 female SB, 07072-M10002 (BLK) COINTRAP female M 20 adjuster V, und 07078-F00002 (BLK) COINTRAP female M sewable (07078)

Note
Use in safety-relevant applications such as helmet straps is subject to the approval of the attachment by FIDLOCK.
Not suitable for the safety-related use on motorcycle helmets or equestrian helmets.

COINTRAP*male M UN high*

07072-M10002 (BLK)

New



Opening mechanism

lift

Weight

3,40 g

Dimensions (ø; height)

22,1 mm; 6,9 mm

Material

PA66GF, NdFeB, epoxy

Colour

black

Sector

bags, apparel, professionals

#

Compatible with female part: 07077-F00002 (BLK) COINTRAP female M 20 adjuster V, 07070-F00002 (BLK) COINTRAP 15 female SB and 07078-F00002 (BLK) COINTRAP female M sewable (07078)

#

Backside with groves for sewing machine blankholder

Note

Not suitable for helmets.

COINTRAP*female M 15 SB*

07070-F00002 (BLK)

New



Opening mechanism

lift

Webbing width

15 mm

Weight

4,90 g

Dimensions (L×W×H)

39,5 × 27 × 10,6 mm

Material

PA66GF, NdFeB, epoxy

Colour

black

Assembly

strap

Sector

apparel, bags, professionals

#

Very lightweight

#

Combines strong fastening with small size

#

Single-handed closing for helmets and other application areas

#

Compatible with male part: 07072-M10002 (BLK) COINTRAP male M UN high and 07072-M00002 (BLK) COINTRAP male M UN

#

Note

Use in safety-relevant applications such as helmet straps is subject to the approval of the attachment by FIDLOCK.

Not suitable for the safety-related use on motorcycle helmets or equestrian helmets.

COINTRAP*female M 20 adjuster V*

07077-F00002 (BLK)

New



Opening mechanism

lift

Webbing width

20 mm

Weight

5,9 g

Dimensions (L×W×H)

46,9 × 22,0 × 11,9 mm

Material

PA66GF, NdFeB, epoxy

Colour

black

Assembly

strap

Sector

apparel, bags, sports

#

Compatible with male part: 07072-M10002 (BLK) COINTRAP male M UN high

#

Large contact area with two undercuts guarantees secure fastening

#

Remains flexible thanks to vertical adjustability

Note

Not suitable for helmets.

COINTRAP *female M sewable*
07078-F00002 (BLK)

New



Opening mechanism
lift

Weight
4,90 g

Dimensions (ø; height)
48,5mm; 11,0 mm

Material
PA6, NdFeB, epoxy

Colour
black

Assembly
sewing

Sector

bags, sports, apparel

Compatible with male part: 07072-M10002 (BLK)
COINTRAP male M UN high and 07072-M00002
(BLK) COINTRAP male M UN

Round stitching area is to be sewn on to the
material

Note

Not suitable for helmets.



PINCLIP – strong, intuitive and rattle-free connections

With the PINCLIP products, FIDLOCK presents innovative, durable and virtually clearance-free mounting and fastening solutions for challenging applications, e.g. on moving objects.

Naturally, the technology of the PINCLIP product family is in line with our FIDLOCK concept, uniting secure fastening with intuitive ease of use – thanks to the ingenious combination of magnets and mechanics. The functionality of PINCLIP is defined by two durable magnetic metal pins that automatically lock into place when closing the fastener. This results in the PINCLIP-typical features – secure, virtually clearance- and rattle-free fastening paired with quick and easy use.

Depending on the version, PINCLIP products are the ideal choice for diverse application areas, e.g. as connectors for bags, object mounts in cars or other vehicles, fasteners for battery covers on e-bikes and much more!

Patents: Our PINCLIP products feature an innovative technology that creates virtually clearance-free fastening with high ease of use for challenging application areas. Therefore, products of the PINCLIP family are protected by at least one of the following patents:

DE102019201259A1, EP3857075A1, CN113383170A, KR1020210118856A, HK40048852A, US20220082123A1, JP7216211B2, EP3800360B1 (DE,FR,GB), DE102019215277A1, EP3827178A1, CN113056216A, HK40042921A, HK40047616A, TWI766385B, US20220312904A1, JP2022550493A, DE402022100460, EU015004182, DE402022100533, EU015004184

You can find detailed and updated information on fidlock.com/en/patents.

PINCLIP M

FA-10011-000002 (BLK) + A-10100-000002 (BLK)

New



Opening mechanism
pull

Weight
ca. 26 g

Dimensions (L×W×H)
female: 71,0 (incl. pull tab) × 59,4 × 12,3 mm; male: 18,2 × 59,4 × 10,2 mm

Material
PA66GF30, PA66GF15, PA6, stainless steel (Zn coated), silicone

Static breaking load
100 kg

Colour
black

Assembly
rivets or screws (not included)

Sector

bags, outdoor, sports, transportation, professionals

- # Strong and virtually clearance- and rattle-free fastening paired with intuitive use
- # Version with a large pull tab for quick-release
- # Easy assembly with rivets or screws (not included)
- # Ideal for challenging applications, e.g. mounting equipment in moving objects or connecting bags

Note

Not suitable for safety-related applications.

PINCLIP M integrated

FA-10200-000011 (BLK) + A-10001-000001 (BLK)

New



Opening mechanism
flip lever

Weight
ca. 27 g

Dimensions (L×W×H)
female: 29,2 × 59,4 × 12,3 mm; male: 43,6 × 35,8 × 14,0 mm

Material
PA66GF30, PA66GF15, stainless steel, PA6, stainless steel (Zn coated)

Static breaking load
100 kg

Colour
black

Assembly
rivets or screws (not included), clip in (see assembly guide)

Sector

professionals, sports, transportation, outdoor, bags

- # Strong and virtually clearance- and rattle-free fastening paired with intuitive use
- # Version for integration into surfaces ([click here](#) for additional information about assembly and integration)
- # No disturbing protruding elements - the opening lever automatically folds back when the fastener closes
- # Ideal for applications on moving objects or products requiring flat surfaces, e.g. battery or storage cover on e-bikes

Note

Not suitable for safety-related applications.

PINCLIP M integrated vertical

FA-10200-000011 (BLK) + A-10002-000002 (BLK)

New



Opening mechanism
flip lever

Weight
16,00 g

Dimensions (L×W×H)
Female 38,6 × 29,8 × 24,7 mm; male 43,6 × 35,8 × 14,0 mm

Material
PA66GF, PA6, stainless steel (Zn coated), NdFeB, epoxy

Colour
black

Assembly
rivets or screws (not included), clip in

Sector

professionals, sports, transportation, outdoor

- # Strong and virtually clearance- and rattle-free fastening paired with intuitive use
- # Version for integration into narrower surfaces
- # No disturbing protruding elements - the opening lever automatically folds back when the fastener closes
- # Ideal for applications on moving objects or products requiring flat and narrower surfaces, e.g. battery or storage cover on e-bikes

Note

Not suitable for safety-related applications.



A handle that gets to grips – ergonomics and one-hand operation for safety and convenience

In addition to the very compact and light design, the MINI TURN combines multiple convincing traits: half a turn of the handle opens the fastener in no time, and it closes automatically, enabling single-handed use. The great variety of handles and materials offer product designers great flexibility in their composition. Depending on the intended use of the fastener on the product, the MINI TURN is ideal for shoulder bags, satchels, handbags and many other applications. Furthermore, the fastener covers are available in different colours and can feature individual branding. Possibilities are optional dyeing of the plastic and a logo sticker, or anodisation and laser engraving of the aluminium. We can even develop custom handles upon request. The MINI TURN products impress with their ease-of-use, convenience and processing, making the assembly quick and easy.

MINI TURN thread – processing with screw collar

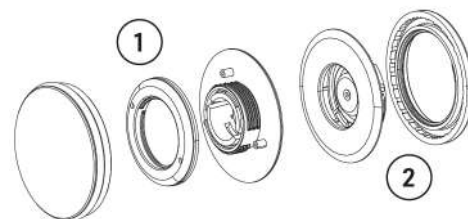
The simple processing turns the MINI TURN into an ideal solution for a wide variety of application areas. The fastener is fitted using stable thread collars for the upper part (male) and the lower part (female). Even with simple tools, the execution can be performed reliably.

Convenient tools for the assembly of our MINI TURN products are available. You can find them in our **FIDLOCK TOOLS** catalogue.

Patents: The MINI TURN is an innovative rotary fastener that uniquely combines function and fun. This is a child-friendly option e.g. on school bags, but some handles are also ideal for other sophisticated products which need ease-of-use combined with elegant design. Therefore, products of the MINI TURN family are protected by at least one of the following patents:

CN101874666, CN100563494, EP1737310 (DE, FR, GB), JP5086803, KR101165595, US8009002, AU2007272165, CA2681141, CN101646362, EP2040572 (AT, DE, FR, GB, IT, NL), HK1140388, IN3097795, JP5060554, KR101130654, RU2415623, US8430434, EP2436280 (AT, CH, DE, ES, FR, GB, IT, NL, PL, TR), CN101925313, EP2252176 (AT, DE, FR, GB), US8353544, VN10019341

You can find detailed and updated information on **fidlock.com/en/patents**.



MINI TURN set handle A 50

02010-000012 (BLK)



Opening mechanism
turn

Weight
ca. 37 g

Dimensions
50 mm (Ø female); 51,0 mm (Ø handle)

Height (female; male)
9,8 mm; 23,9 mm

Punch hole for assembly
female: 36,0 mm; male: 27,0 mm

Material
PA66GF15

Static breaking load
44 kg

Colour
black

Assembly
threaded ring (included)

For material thickness
female and male: 1,0 - 2,6 mm

Tools for assembly
female: TOOL 2/TOOL 3/TOOL 22; male: TOOL 1/
TOOL 3/TOOL 22

Sector
bags

- # Ergonomic handle shape very easy to grip
- # Custom solid and translucent colours for the handle available upon request (polycarbonate, PC)
- # Central carrier for individual logo sticker
- # Ideal for diverse bags, satchels, and backpacks

Note

The MINI TURN handle features a single-use catch mechanism and isn't removable after successful fitting!

For prototypes and testing, the handle can be made removable by cutting off two catch hooks on the shaft of the handle (attention: the cut handle can no longer be used for production).

Not suitable for safety-related applications.

MINI TURN set handle B 50

02020-000012 (TBL)



Opening mechanism
turn

Weight
ca. 38 g

Dimensions
50 mm (Ø female); 52,0 mm (Ø handle)

Height (female; male)
9,8 mm; 23,2 mm

Punch hole for assembly
female: 36,0 mm; male: 27,0 mm

Material
PA66GF15, PC

Static breaking load
44 kg

Colour
translucent black

Assembly
threaded ring (included)

For material thickness
female and male: 1,0 - 2,6 mm

Tools for assembly
female: TOOL 2/TOOL 3/TOOL 22; male: TOOL 1/
TOOL 3/TOOL 22

Sector
bags

- # Elegant and round handle with black polycarbonate surface
- # Rubber ring offers easy grip
- # Central carrier for individual logo sticker
- # Ideal for diverse bags, satchels, and backpacks
- # **Click here** for information about the assembly tools

Note

The MINI TURN handle features a single-use catch mechanism and isn't removable after successful fitting!

For prototypes and testing, the handle can be made removable by cutting off two catch hooks on the shaft of the handle (attention: the cut handle can no longer be used for production).

Not suitable for safety-related applications.

MINI TURN set handle C alu 40

02045-000012 (ALU)



Opening mechanism
turn

Weight
ca. 40 g

Dimensions
50 mm (Ø female); 42,0 mm (Ø handle)

Height (female; male)
9,8 mm; 23,9 mm

Punch hole for assembly
female: 36,0 mm; male: 27,0 mm

Material
PA66GF15, aluminium

Static breaking load
44 kg

Colour
aluminium anodized

Assembly
threaded ring (included)

For material thickness
female and male: 1,0 - 2,6 mm

Tools for assembly
female: TOOL 2/TOOL 3/TOOL 22; male: TOOL 1/
TOOL 3/TOOL 22

Sector
bags

- # A smaller version of the handle C alu 50
- # High-quality aluminium surface with rubber ring for easy grip
- # Custom laser engraving or coloured anodisation available upon request
- # Ideal for diverse bags, satchels, and backpacks
- # **Click here** for information about the assembly tools

Note

The MINI TURN handle features a single-use catch mechanism and isn't removable after successful fitting!

For prototypes and testing, the handle can be made removable by cutting off two catch hooks on the shaft of the handle (attention: the cut handle can no longer be used for production).

Not suitable for safety-related applications.

MINI TURN set handle C alu 50

02040-000012 (ALU)



Opening mechanism
turn

Weight
ca. 46 g

Dimensions
50 mm (Ø female); 52,0 mm (Ø handle)

Height (female; male)
9,8 mm; 21,2 mm

Punch hole for assembly
female: 36,0 mm; male: 27,0 mm

Material
PA66GF15, aluminium

Static breaking load
44 kg

Colour
aluminium anodized

Assembly
threaded ring (included)

For material thickness
female and male: 1,0 - 2,6 mm

Tools for assembly
female: TOOL 2/TOOL 3/TOOL 22; male: TOOL 1/
TOOL 3/TOOL 22

Sector
bags

- # A larger version of the handle C alu 40
- # High-quality aluminium surface with rubber ring for easy grip
- # Custom laser engraving or coloured anodisation available upon request
- # Ideal for diverse bags, satchels, and backpacks
- # [Click here](#) for information about the assembly tools

Note
The MINI TURN handle features a single-use catch mechanism and isn't removable after successful fitting!

For prototypes and testing, the handle can be made removable by cutting off two catch hooks on the shaft of the handle (attention: the cut handle can no longer be used for production).

Not suitable for safety-related applications.

MINI TURN set handle D 50

02030-000012 (BLK)



Opening mechanism
turn

Weight
ca. 43 g

Dimensions
50 mm (Ø female); 49,6 mm (Ø handle)

Height (female; male)
9,8 mm; 28,0 mm

Punch hole for assembly
female: 36,0 mm; male: 27,0 mm

Material
PA66GF15

Static breaking load
44 kg

Colour
black

Assembly
threaded ring (included)

For material thickness
female and male: 1,0 - 2,6 mm

Tools for assembly
female: TOOL 2/TOOL 3/TOOL 22; male: TOOL 1/
TOOL 3/TOOL 22

Sector
bags

- # Ergonomic shape for easy grip
- # Intuitive one-handed operation
- # Central carrier for individual logo stickers and custom colours upon request
- # Ideal for diverse bags, satchels, and backpacks
- # [Click here](#) for information about the assembly tools

Note
The MINI TURN handle features a single-use catch mechanism and isn't removable after successful fitting!

For prototypes and testing, the handle can be made removable by cutting off two catch hooks on the shaft of the handle (attention: the cut handle can no longer be used for production).

Not suitable for safety-related applications.

MINI TURN set handle F alu 40

02055-000022 (ALU)



Opening mechanism
turn

Weight
ca. 40 g

Dimensions
50 mm (Ø female); 40,0 mm (Ø handle)

Height (female; male)
9,8 mm; 24,0 mm

Punch hole for assembly
female: 36,0 mm; male: 27,0 mm

Material
PA66GF15, aluminium

Static breaking load
44 kg

Colour
aluminium anodized

Assembly
threaded ring (included)

For material thickness
female and male: 1,0 - 2,6 mm

Tools for assembly
female: TOOL 2/TOOL 3/TOOL 22; male: TOOL 1/
TOOL 3/TOOL 22

Sector
bags

- # A smaller version of the handle F alu 50
- # Easy to grip thanks to knurled edge
- # Custom laser engraving or coloured anodisation available upon request
- # Ideal for diverse bags, satchels, and backpacks
- # [Click here](#) for information about the assembly tools

Note
The MINI TURN handle features a single-use catch mechanism and isn't removable after successful fitting!

For prototypes and testing, the handle can be made removable by cutting off two catch hooks on the shaft of the handle (attention: the cut handle can no longer be used for production).

Not suitable for safety-related applications.

MINI TURN

set handle F alu 50

02050-000022 (ALU)



Opening mechanism

turn

Weight

ca. 45 g

Dimensions

50 mm (Ø female); 50,0 mm (Ø handle)

Height (female; male)

9,8 mm; 20,8 mm

Punch hole for assembly

female: 36,0 mm; male: 27,0 mm

Material

PA66GF15, aluminium

Static breaking load

44 kg

Colour

aluminium anodized

Assembly

threaded ring (included)

For material thickness

female and male: 1,0 - 2,6 mm

Tools for assembly

female: TOOL 2/TOOL 3/TOOL 22; male: TOOL 1/TOOL 3/TOOL 22

Sector

bags

A larger version of the handle F alu 40

Easy to grip thanks to knurled edge

Custom laser engraving or coloured anodisation available upon request

Ideal for diverse bags, satchels, and backpacks

Click here for information about the assembly tools

Note

The MINI TURN handle features a single-use catch mechanism and isn't removable after successful fitting!

For prototypes and testing, the handle can be made removable by cutting off two catch hooks on the shaft of the handle (attention: the cut handle can no longer be used for production).

Not suitable for safety-related applications.



The buckle revolution for increased safety, functionality and ease of use

FIDLOCK's true alternative to the traditional buckle - the SLIDER: It features a convincing „easy-entry“ system based on the tried-and-tested FIDLOCK concept (see page 3). The SLIDER product family is named after the intuitive opening mechanism. Sliding laterally will open the fastener. The SLIDER also closes automatically. When brought together, the buckle halves attract each other and snap into place correctly. Therefore, the SLIDER offers an easy and comfortable one-handed operation. Versions are available for 25 mm and 40 mm wide straps. Manufactured from fibreglass reinforced nylon (PA), it is particularly stable. Upon request, a variation of almost any colour offers product designers great flexibility. The optional “shield” logo plate is available in stainless steel or nylon and provides a unique space for individual logo design on the buckle.

Patents: With the SLIDER product family, we revolutionized the conventional buckle, achieving easy one-handed use: Simply slide to open and bring the parts together which will connect automatically. Therefore, the products of the SLIDER family are protected by at least one of the following patents:

AU2007272165, CA2681141, CN101646362, EP2040572 (AT, DE, FR, GB, IT, NL), HK1140388, IN309795, JP5060554, KR101130654, RU2415623, US8430434, EP2436280 (AT, CH, DE, ES, FR, GB, IT, NL, PL, TR), CN102098937, EP2306860 (DE, FR, GB), US8464403, CN101951801, EP2254435 (AT, DE, FR, GB, IT), US8359716

You can find detailed and updated information on fidlock.com/en/patents.

SLIDER

SLIDER 25

FL-04010



Opening mechanism
slide laterally

Webbing width
25 mm

Weight
ca. 21 g

Dimensions (L×W×H)
50,0 × 40,1 × 15,4 mm

Material
PA66GF15

Static breaking load
25 kg

Colour
black

Assembly
strap, single bar, ladderlock

Sector
bags, apparel, footwear, professionals, sports, outdoor, transportation

Magnetic buckle for 25 mm wide webbing

Ladderlock on one side for strap adjustment

Versatile application areas, e.g. bags, backpacks, satchels

Note
Not suitable for safety-related applications.

SLIDER 25 stst shield

FL-F4050



Opening mechanism
slide laterally

Webbing width
25 mm

Weight
ca. 25 g

Dimensions (L×W×H)
50,2 × 40,3 × 15,4 mm

Material
PA66GF15, stainless steel

Static breaking load
25 kg

Colour
black

Assembly
strap, ladderlock, single bar

Sector
bags, apparel, footwear, professionals, sports, outdoor, transportation

Magnetic buckle for 25 mm wide webbing

Custom logo possible on the elegant metal shield

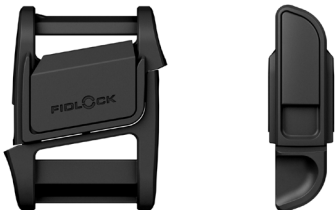
Ladderlock on one side for strap adjustment

Versatile application areas, e.g. bags, backpacks, satchels

Note
Not suitable for safety-related applications.

SLIDER 25 plastic shield

FL-F4060



Opening mechanism
slide laterally

Webbing width
25 mm

Weight
ca. 22 g

Dimensions (L×W×H)
50,2 × 40,3 × 15,4 mm

Material
PA66GF15

Static breaking load
25 kg

Colour
black

Assembly
strap, single bar, ladderlock

Sector
bags, apparel, footwear, professionals, sports, outdoor, transportation

Magnetic buckle for 25 mm wide webbing

Shield customizable with a logo upon request

Ladderlock on one side for strap adjustment

Versatile application areas, e.g. bags, backpacks, satchels

Note
Not suitable for safety-related applications.

SLIDER 40

FL-F4100



Opening mechanism
slide laterally
Webbing width
40 mm
Weight
ca. 28 g
Dimensions (L×W×H)
57,6 × 49,0 × 16,5 mm
Material
PA66GF15
Static breaking load
30 kg
Colour
black
Assembly
strap, ladderlock, single bar

Sector
bags, apparel, footwear, professionals, sports,
outdoor, transportation

Magnetic buckle for 40 mm wide webbing

Custom logo possible upon request

Ladderlock on one side for strap adjustment

Versatile application areas, e.g. bags, backpacks
or satchels

Note
Not suitable for safety-related applications.

SLIDER 40 double LL

FL-F4110



Opening mechanism
slide laterally
Webbing width
40 mm
Weight
ca. 29 g
Dimensions (L×W×H)
66,8 × 49,0 × 16,2 mm
Material
PA66GF15
Static breaking load
25 kg
Colour
black
Assembly
strap

Sector
bags, apparel, footwear, professionals, sports,
outdoor, transportation

Magnetic buckle for 40 mm wide webbing

Custom logo possible upon request

Ladderlock on both sides for strap adjustment

Versatile application areas, e.g. bags, backpacks
or satchels

Note
Not suitable for safety-related applications.



Closing, joining and fixing – the universal fastener with versatile fields of application

The SNAP fasteners are the most compact and the most versatile solutions in the FIDLOCK portfolio. Of course, also the SNAP product family is based on the tested-and-tried FIDLOCK concept (see page 3), which combines the convenience of a magnetic fastener with a stable mechanical snap. Like all our fastening systems, the SNAP models boast an automatic closing mechanism. They are opened by sliding laterally, enabling a simple one-handed operation.

Depending on the size selected and the individual design of the final product, this universal fastener is suitable for a wide variety of applications (see sizes and range of applications). Variants with high-quality metal caps, different materials, and refined surfaces (brass and aluminium – for example, brushed, polished, anodized, chrome-plated or gold-plated) provide elegant design options, particularly for exclusive products. Additionally, various SNAP closures can be customized, e.g. with logos and colours upon request, making them ideal for integration into the overall product design.

SNAP: sizes and range of application S M L

The SNAP male and female parts are available in three different sizes – S, M, L. This affects the compatibility of the components and determines possible areas of application:

SNAP S: The smallest size of the SNAP components is primarily suitable for textile applications or low loads, such as a fastener on small bags or collars. These fasteners are very compact and inconspicuous and therefore not suitable for luggage linking.

SNAP M: The medium size of the SNAP components is ideally suited for everyday application areas, e.g. as a fastener on urban- or lifestyle bags. Additionally, M fasteners can be applied to textiles as slightly larger alternatives to the SNAP S components.

SNAP L: The largest size of the SNAP components is also the strongest and ideally suited for application areas that require hard-wearing fasteners with uniquely easy operation, for example, as a connector of two bags, to attach a saddle bag or as a fastener on a school bag.

male/female – flexible fastener solutions

The SNAP product family consists of a broad range of two-part connection pieces – the male (1) upper parts and the female (2) lower parts – which can be combined with each other in almost any configuration. Product designers are provided with adequate versions and fitting types for different materials and their thicknesses.

Convenient tools for the assembly of our SNAP products are available. You can find them in our **FIDLOCK TOOLS catalogue**.

Patents: The SNAP products are innovative fastening and mounting systems that allow new possibilities in diverse application areas (e.g. connecting pouches and bags). Therefore, the versatile products of the SNAP family are protected by at least one of the following patents:

SNAP: US8794682, AU2007272165, CA2681141, CN101646362, EP2040572, HK1140388, IN309795, JP5060554, KR101130654, RU2415623, US8430434, EP2436280, CN101925313, EP2252176, US8353544, VN10019341, CN103957739, EP2782468, US9555935

SNAP add on: US8794682, AU2007272165, CA2681141, CN101646362, EP2040572, HK1140388, IN309795, JP5060554, KR101130654, RU2415623, US8430434, EP2436280, CN101925313, EP2252176, US8353544, VN10019341, CN103957739, EP2782468, US9555935

SNAP retractable: DE102010044144B3, US8739371B2, US8794682, AU2007272165, CA2681141, CN101646362, EP2040572, HK1140388, IN309795, JP5060554, KR101130654, RU2415623, US8430434, EP2436280, CN101925313, EP2252176, US8353544, VN10019341, CN103957739, EP2782468, US9555935

You can find detailed and updated information on fidlock.com/en/patents.



SNAP male S screw low

FL-F5010 S M L



Opening mechanism defined by female part

Weight
ca. 2 g

Dimensions (ø; height)
18,7 mm; 9,2 mm

Punch hole for assembly
8,0 mm

Material
PA66GF15

Static breaking load
2 kg

Colour
black

Assembly
screw thread

For material thickness
0,5 - 1,5 mm

Tools for assembly
front: TOOL 4; back: TOOL 3/TOOL 5/TOOL 23/face spanner

Sector
bags, apparel, medical

Compact, clean design

Ideal for materials with a thickness of 0,5-1,5 mm

Simple fitting with screw thread

Compatible with S-size SNAP female counterparts

Click here for information about the assembly tools

Note
Not suitable for safety-related applications.

The load capacity and the suitability of the fastener depends on the size of the components and specific application on the product.

SNAP fasteners always require a combination of a SNAP male part and a female part of the SNAP, SNAP pull or SNAP push product families.

SNAP male S screw mid

FL-05715 S M L



Opening mechanism defined by female part

Weight
ca. 2 g

Dimensions (ø; height)
18,7 mm; 9,1 mm

Punch hole for assembly
8,0 mm

Material
PA66GF15

Static breaking load
2 kg

Colour
black

Assembly
screw thread

For material thickness
1,4 - 2,9 mm

Tools for assembly
front: TOOL 4; back: TOOL 3/TOOL 5/TOOL 23/face spanner

Sector
apparel, bags, medical

Compact, clean design

Ideal for materials with a thickness of 1,4-2,9 mm

Simple fitting thanks with screw thread

Compatible with S-size SNAP female counterparts

Click here for information about the assembly tools

Note
Not suitable for safety-related applications.

The load capacity and the suitability of the fastener depend on the size of the components and specific application on the product.

SNAP fasteners always require a combination of a SNAP male part and a female part of the SNAP, SNAP pull or SNAP push product families.

SNAP male S screw high

FL-05020 S M L



Opening mechanism defined by female part

Weight
ca. 2 g

Dimensions (ø; height)
18,7 mm; 11,7 mm

Punch hole for assembly
8,0 mm

Material
PA66GF15

Static breaking load
2 kg

Colour
black

Assembly
screw thread

For material thickness
2,8 - 4,0 mm

Tools for assembly
front: TOOL 4; back: TOOL 3/TOOL 5/TOOL 23/face spanner

Sector
apparel, bags, medical

Compact, clean design

Ideal for materials with a thickness of 2,8-4,0 mm

Simple fitting with screw thread

Compatible with S-size SNAP female counterparts

Click here for information about the assembly tools

Note
Not suitable for safety-related applications.

The load capacity and the suitability of the fastener depend on the size of the components and specific application on the product.

SNAP fasteners always require a combination of a SNAP male part and a female part of the SNAP, SNAP pull or SNAP push product families.

SNAP male S screw brass (Alu) low

FL-05033 S M L



Opening mechanism
defined by female part

Weight
ca. 3 g

Dimensions (ø; height)
18,7 mm; 9,2 mm

Material
PA66GF15, aluminium

Static breaking load
2 kg

Colour
brass

Assembly
screw thread

For material thickness
0,5 - 1,5 mm

Tools for assembly
front: TOOL 4; back: TOOL 3/TOOL 5/TOOL 23/face
spanner

Sector
bags, medical, apparel

Elegant, brass-coloured surface

Ideal for materials with a thickness of 0,5-1,5 mm

Simple fitting with screw thread

Compatible with S-size SNAP female counterparts

Click here for information about the assembly tools

Note
Not suitable for safety-related applications.

The load capacity and the suitability of the fastener depend on the size of the components and specific application on the product.

SNAP fasteners always require a combination of a SNAP male part and a female part of the SNAP, SNAP pull or SNAP push product families.

SNAP male S screw brass (Alu) high

FL-05034 S M L



Opening mechanism
defined by female part

Weight
ca. 4 g

Dimensions (ø; height)
18,7 mm; 11,7 mm

Material
PA66GF15, aluminium

Static breaking load
2 kg

Colour
brass

Assembly
screw thread

For material thickness
2,8 - 4,0 mm

Tools for assembly
front: TOOL 4; back: TOOL 3/TOOL 5/TOOL 23/face
spanner

Sector
medical, bags, apparel

Elegant, brass-coloured surface

Ideal for materials with a thickness of 2,8-4,0 mm

Simple fitting with screw thread

Compatible with S-size SNAP female counterparts

Click here for information about the assembly tools

Note
Not suitable for safety-related applications.

The load capacity and the suitability of the fastener depend on the size of the components and specific application on the product.

SNAP fasteners always require a combination of a SNAP male part and a female part of the SNAP, SNAP pull or SNAP push product families.

SNAP male S screw low alu

FL-05043 S M L



Opening mechanism
defined by female part

Weight
ca. 3 g

Dimensions (ø; height)
18,7 mm; 9,2 mm

Material
PA66GF15, aluminium

Static breaking load
2 kg

Colour
aluminium

Assembly
screw thread

For material thickness
0,5 - 1,5 mm

Tools for assembly
front: TOOL 4; back: TOOL 3/TOOL 5/TOOL 23/face
spanner

Sector
medical, bags, apparel

Refined, aluminium-coloured surface

Ideal for materials with a thickness of 0,5-1,5 mm

Simple fitting with screw thread

Compatible with S-size SNAP female counterparts

Click here for information about the assembly tools

Note
Not suitable for safety-related applications.

The load capacity and the suitability of the fastener depends on the size of the components and specific application on the product.

SNAP fasteners always require a combination of a SNAP male part and a female part of the SNAP, SNAP pull or SNAP push product families.

SNAP male S screw high alu

FL-05044 S M L



Opening mechanism
defined by female part

Weight
ca. 4 g

Dimensions (ø; height)
18,7 mm; 11,7 mm

Material
PA66GF15, aluminium

Static breaking load
2 kg

Colour
aluminium

Assembly
screw thread

For material thickness
2,8 - 4,0 mm

Tools for assembly
front: TOOL 4; back: TOOL 3/TOOL 5/TOOL 23/face
spanner

Sector
apparel, bags, medical

- # Refined, aluminium-coloured surface
- # Ideal for materials with a thickness of 2,8-4,0 mm
- # Simple fitting with screw thread
- # Compatible with S-size SNAP female counterparts
- # **Click here** for information about the assembly tools

Note
Not suitable for safety-related applications.

The load capacity and the suitability of the fastener depend on the size of the components and specific application on the product.

SNAP fasteners always require a combination of a SNAP male part and a female part of the SNAP, SNAP pull or SNAP push product families.

SNAP male S sewable

FL-05451 S M L



Opening mechanism
defined by female part

Weight
ca. 2 g

Dimensions (ø; height)
27,0 mm; 8,0 mm

Punch hole for assembly
17,0 mm

Material
PA66GF15

Static breaking load
2 kg

Colour
black

Assembly
welding, sewing

Sector
bags, medical, apparel

- # Easy sewing onto materials thanks to the nylon strip
- # Ideal for textile applications, e.g. apparel
- # Compatible with S-size SNAP female counterparts

Note
Not suitable for safety-related applications.

The load capacity and the suitability of the fastener depend on the size of the components and specific application on the product.

SNAP fasteners always require a combination of a SNAP male part and a female part of the SNAP, SNAP pull or SNAP push product families.

SNAP male S sewable adjuster

FL-05455 S M L



Opening mechanism
defined by female part

Weight
ca. 4 g

Dimensions (L×W×H)
65,8 × 25,8 × 8,1 mm

Material
PA6, PA66GF15

Static breaking load
depending on application

Colour
black

Assembly
sewing

Sector
apparel, bags, medical

- # Easy sewing onto materials thanks to the nylon strip
- # Guide rail for intuitive adjustment
- # Ideal for textile applications, e.g. jacket collar
- # Compatible with S-size SNAP female counterparts

Note
Not suitable for safety-related applications.

The load capacity and the suitability of the fastener depend on the size of the components and specific application on the product.

SNAP fasteners always require a combination of a SNAP male part and a female part of the SNAP, SNAP pull or SNAP push product families.

SNAP male S 6 springcap

FL-05061 S M L



Opening mechanism
defined by female part

Weight
ca. 4 g

Punch hole for assembly
8,0 mm

Material
PA66GF15, stainless steel

Static breaking load
2 kg

Colour
black

Assembly
pressed together

For material thickness
0,0 - 3,0 mm

Sector
professionals, bags, medical

- # Elegant clamp for visible fitting
- # Suitable for 0-3 mm thick materials
- # Axle clamp and shaft are pressed together through a punch hole (press required)
- # Compatible with S-size SNAP female counterparts

Note
Not suitable for safety-related applications.

The load capacity and the suitability of the fastener depend on the size of the components and specific application on the product.

SNAP fasteners always require a combination of a SNAP male part and a female part of the SNAP, SNAP pull or SNAP push product families.

SNAP male S 10 springcap

FL-05063 S M L



Opening mechanism
defined by female part

Weight
ca. 4 g

Punch hole for assembly
8,0 mm

Material
PA66GF15, stainless steel

Static breaking load
2 kg

Colour
black

Assembly
pressed together

For material thickness
0,0 - 7,0 mm

Sector
professionals, bags, medical

- # Elegant clamp for visible fitting
- # Suitable for 0-7 mm thick materials
- # Axle clamp and shaft are pressed together through a punch hole (press required)
- # Compatible with S-size SNAP female counterparts

Note
Not suitable for safety-related applications.

The load capacity and the suitability of the fastener depend on the size of the components and specific application on the product.

SNAP fasteners always require a combination of a SNAP male part and a female part of the SNAP, SNAP pull or SNAP push product families.

SNAP male S add on

FL-05003 S M L



Opening mechanism
turn & slide

Weight
ca. 1 g

Dimensions (ø; height)
24,0 mm; 6,5 mm

Material
PA66GF15

Static breaking load
2 kg

Colour
black

Assembly
add-on part

Sector
bags, apparel, medical

- # Additional module for a SNAP male S screw (not included)
- # Two-step opening: turn, then slide
- # Only opens if aligned with the opening of the female part
- # Compatible female parts are 05200, 05100 and 05103

Note
Not suitable for safety-related applications.

The load capacity and the suitability of the fastener depend on the size of the components and specific application on the product.

SNAP fasteners always require a combination of a SNAP male part and a female part of the SNAP, SNAP pull or SNAP push product families.

SNAP male S rope

FL-05047 S M L



Opening mechanism
defined by female part

Weight
ca. 2 g

Dimensions
18,5 mm (Ø)

Material
PA66GF15

Static breaking load
2 kg

Colour
black

Assembly
clip together, screw thread, rope

For material thickness
rope: 3,0 mm

Tools for assembly
front: TOOL 4; back: TOOL 18

Sector
bags, apparel, medical

Can be used with a rubber O-ring instead of a rope

Ideal for textile applications, e.g. on jacket collars or sleeves

Compatible with S-size SNAP female counterparts

Click here for information about the assembly tools

Note
Neither rope nor O-ring are included in the scope of delivery.

Not suitable for safety-related applications.

The load capacity and the suitability of the fastener depend on the size of the components and specific application on the product.

SNAP fasteners always require a combination of a SNAP male part and a female part of the SNAP, SNAP pull or SNAP push product families.

SNAP male M bolt - M5 x 8mm

FL-05150 S M L



Opening mechanism
defined by female part

Weight
ca. 4 g

Dimensions (ø; height)
12,8 mm; 6,2 mm (without threaded shaft)

Punch hole for assembly
5,0 mm

Threaded shaft (length)
8,3 mm

Material
aluminium, steel (zinc coated)

Static breaking load
60 kg

Colour
aluminium

Assembly
screwing

For material thickness
8,0 mm

Sector
transportation, outdoor, professionals, medical, bags

Combination of screw and fastening component

Screwed into M5 threaded nut (shaft length 8 mm)

Ideal for applications in the mechanical engineering sector or on bikes

Compatible with M-size SNAP female counterparts

Note
Not suitable for safety-related applications.

The load capacity and the suitability of the fastener depend on the size of the components and specific application on the product.

SNAP fasteners always require a combination of a SNAP male part and a female part of the SNAP, SNAP pull or SNAP push product families.

SNAP male M bolt - M5 x 8mm

FL-05150 S M L



Opening mechanism
defined by female part

Weight
ca. 4 g

Dimensions (ø; height)
12,8 mm; 6,2 mm (without threaded shaft)

Punch hole for assembly
5,0 mm

Threaded shaft (length)
8,3 mm

Material
aluminium, steel (zinc coated)

Static breaking load
60 kg

Colour
black

Assembly
screwing

For material thickness
8,0 mm

Sector
transportation, outdoor, professionals, medical, bags

Combination of screw and fastening component

Black version

Screwed into M5 threaded nut (shaft length 8 mm)

Ideal for applications in the mechanical engineering sector or on bikes

Compatible with M-size SNAP female counterparts

Note
Not suitable for safety-related applications.

The load capacity and the suitability of the fastener depend on the size of the components and specific application on the product.

SNAP fasteners always require a combination of a SNAP male part and a female part of the SNAP, SNAP pull or SNAP push product families.

SNAP male M bolt - M5 x 18mm

FL-05151 S **M** L



Opening mechanism
defined by female part

Weight
ca. 5 g

Dimensions (ø; height)
12,8 mm; 6,2 mm (without threaded shaft)

Punch hole for assembly
5,0 mm

Threaded shaft (length)
18,3 mm

Material
aluminium, steel (zinc coated)

Static breaking load
60 kg

Colour
aluminium

Assembly
screwing

For material thickness
18,0 mm

Sector
transportation, outdoor, professionals, medical, bags

- # Combination of screw and fastening component
- # Screwed into M5 threaded nut (shaft length 18 mm)
- # Ideal for applications in the mechanical engineering sector or on bikes
- # Compatible with M-size SNAP female counterparts

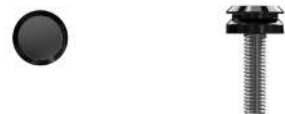
Note
Not suitable for safety-related applications.

The load capacity and the suitability of the fastener depend on the size of the components and specific application on the product.

SNAP fasteners always require a combination of a SNAP male part and a female part of the SNAP, SNAP pull or SNAP push product families.

SNAP male M bolt - M5 x 18mm

FL-05151 S **M** L



Opening mechanism
defined by female part

Weight
ca. 5 g

Dimensions (ø; height)
12,8 mm; 6,2 mm (without threaded shaft)

Punch hole for assembly
5,0 mm

Threaded shaft (length)
18,3 mm

Material
aluminium, steel (zinc coated)

Static breaking load
60 kg

Colour
black

Assembly
screwing

For material thickness
18,0 mm

Sector
transportation, outdoor, professionals, medical, bags

- # Combination of screw and fastening component
- # Black version
- # Screwed into M5 threaded nut (shaft length 18 mm)
- # Ideal for applications in the mechanical engineering sector or on bikes
- # Compatible with M-size SNAP female counterparts

Note
Not suitable for safety-related applications.

The load capacity and the suitability of the fastener depend on the size of the components and specific application on the product.

SNAP fasteners always require a combination of a SNAP male part and a female part of the SNAP, SNAP pull or SNAP push product families.

SNAP male M 25 adjuster

FL-05131 S **M** L



Opening mechanism
defined by female part

Webbing width
25 mm

Weight
ca. 6 g

Dimensions (L×W×H)
37,7 × 36,0 × 13,7 mm

Material
PA66GF

Static breaking load
20 kg

Colour
black

Assembly
strap, tri-glide

Sector
bags, medical, professionals, outdoor, sports

- # Threaded onto webbing and remains moveable after fitting
- # Version with split bar is also available (article no. 05130)
- # Ideal for diverse applications with straps, e.g. bags
- # Compatible with M-size SNAP female counterparts

Note
Not suitable for safety-related applications.

The load capacity and the suitability of the fastener depend on the size of the components and specific application on the product.

SNAP fasteners always require a combination of a SNAP male part and a female part of the SNAP, SNAP pull or SNAP push product families.

SNAP male M 25 adjuster split bar

FL-05130 S M L



Opening mechanism
defined by female part

Webbing width
25 mm

Weight
ca. 6 g

Dimensions (L×W×H)
37,7 × 36,0 × 13,7 mm

Material
PA66GF

Static breaking load
20 kg

Colour
black

Assembly
strap, tri-glide

Sector

bags, professionals, medical, outdoor, sports

- # Threaded onto webbing and remains moveable after fitting
- # Retrofittable thanks to split bar
- # Ideal for diverse applications with straps, e.g. bags
- # Compatible with M-size SNAP female counterparts

Note

Not suitable for safety-related applications.

The load capacity and the suitability of the fastener depend on the size of the components and specific application on the product.

SNAP fasteners always require a combination of a SNAP male part and a female part of the SNAP, SNAP pull or SNAP push product families.

SNAP male M 50 adjuster

FL-05761 S M L



Opening mechanism
defined by female part

Webbing width
50 mm

Weight
ca. 21 g

Dimensions (L×W×H)
62,8 × 61,6 × 13,0 mm

Material
PA66GF15

Static breaking load
37 kg

Colour
black

Assembly
strap, tri-glide

Sector

bags, outdoor, apparel

- # Designed for 50 mm wide webbing
- # Threaded onto webbing and remains moveable after fitting
- # Ideal for applications with wide straps, e.g. tool belts and backpacking bags
- # Compatible with M-size SNAP female counterparts

Note

Not suitable for safety-related applications.

The load capacity and the suitability of the fastener depend on the size of the components and specific application on the product.

SNAP fasteners always require a combination of a SNAP male part and a female part of the SNAP, SNAP pull or SNAP push product families.

SNAP male M screw low

FL-05122 S M L



Opening mechanism
defined by female part

Weight
ca. 5 g

Dimensions
32,9 mm (Ø)

Height (top part; bottom part)
13,7 mm; 3,0 mm

Punch hole for assembly
20,0 mm

Material
PA66GF15

Static breaking load
15 kg

Colour
black

Assembly
threaded ring (included)

For material thickness
0,5 - 2,5 mm

Tools for assembly
front: TOOL 3/TOOL 9; back: TOOL 3/TOOL 7/TOOL 23/face spanner

Sector

bags, professionals, medical

- # Version for a material thickness of 0,5-2,5 mm
- # Easy fitting with threaded ring and face spanner
- # Ideal for everyday applications, e.g. bags
- # Compatible with M-size SNAP female counterparts
- # [Click here](#) for information about the assembly tools

Note

Not suitable for safety-related applications.

The load capacity and the suitability of the fastener depend on the size of the components and specific application on the product.

SNAP fasteners always require a combination of a SNAP male part and a female part of the SNAP, SNAP pull or SNAP push product families.

SNAP male M screw high

FL-05123 S M L



Opening mechanism
defined by female part

Weight
ca. 6 g

Dimensions
32,9 mm (Ø)

Punch hole for assembly
23,0 mm

Material
PA66GF15

Static breaking load
15 kg

Colour
black

Assembly
threaded ring (included)

For material thickness
2,0 - 4,5 mm

Tools for assembly
front: TOOL 3/TOOL 9; back: TOOL 3/TOOL 7/TOOL 23/face spanner

Sector
professionals, bags, medical

- # Version for a material thickness of 2,0-4,5 mm
- # Easy fitting with threaded ring and face spanner
- # Ideal for everyday applications, e.g. bags
- # Compatible with M-size SNAP female counterparts
- # **Click here** for information about the assembly tools

Note
Not suitable for safety-related applications.

The load capacity and the suitability of the fastener depend on the size of the components and specific application on the product.

SNAP fasteners always require a combination of a SNAP male part and a female part of the SNAP, SNAP pull or SNAP push product families.

SNAP male M retractable screw

FL-05282 S M L



Opening mechanism
defined by female part

Weight
ca. 9 g

Dimensions
36 mm (Ø threaded ring)

Dimensions (Ø; height)
33,0 mm; 11,1 mm (retracted)

Punch hole for assembly
24,0 mm

Material
PA66GF15, stainless steel (magnetized)

Static breaking load
30 kg

Colour
black

Assembly
threaded ring (included)

Tools for assembly
front: TOOL 31; back TOOL 3

Sector
bags, children, outdoor, professionals, transportation, sports

- # Flush integration with no protruding elements on surfaces - the locking mechanism emerges when combined with the female part
- # Attached to materials, e.g. textiles, through a punched hole (rec. Ø 24 mm) using the threaded ring - **click here** for additional information about assembly and required TOOLS
- # Compatible with M-sized SNAP female counterparts except for SNAP female M screw (article no. 05500)

Note
Not suitable for safety-related applications.

The load capacity and the suitability of the fastener depend on the size of the components and specific application on the product.

SNAP fasteners always require a combination of a SNAP male part and a female part of the SNAP, SNAP pull or SNAP push product families.

SNAP male M retractable anchor

FL-05281 S M L



Opening mechanism
defined by female part

Weight
ca. 8 g

Dimensions
26,0 mm (bolt circle Ø)

Dimensions (Ø; height)
33,0 mm; 12,3 mm (retracted & incl. anchor)

Material
PA66GF15, stainless steel (magnetized)

Static breaking load
30 kg

Colour
black

Assembly
screw thread, threaded ring (included)

Tools for assembly
TOOL 31

Sector
bags, children, outdoor, professionals, transportation, sports

- # Flush integration with no protruding elements on surfaces - the locking mechanism emerges when combined with the female part
- # Screwed into thick materials, e.g. wood (rec. Ø 26 mm) - **click here** for additional information about assembly and required TOOLS
- # Fastening component and anchor add-on can be unscrewed and removed after assembly if needed
- # Compatible with M-sized SNAP female parts except for SNAP female M screw (article no. 05500)

Note
Not suitable for safety-related applications.

The load capacity and the suitability of the fastener depend on the size of the components and specific application on the product.

SNAP fasteners always require a combination of a SNAP male part and a female part of the SNAP, SNAP pull or SNAP push product families.

SNAP male M sewable

FL-05453 S M L



Opening mechanism
defined by female part

Weight
ca. 4 g

Dimensions (ø; height)
31,8 mm; 10,2 mm

Punch hole for assembly
22 mm

Material
PA6

Static breaking load
15 kg

Colour
black

Assembly
sewing

For material thickness
up to 2,5 mm

Sector

medical, bags, apparel

- # Sewable fastener with alignment aid
- # Ideal for textile applications, e.g. apparel, bags
- # Compatible with M-size SNAP female counterparts

Note

Not suitable for safety-related applications.

The load capacity and the suitability of the fastener depend on the size of the components and specific application on the product.

SNAP fasteners always require a combination of a SNAP male part and a female part of the SNAP, SNAP pull or SNAP push product families.

SNAP male L bolt - M5 x 7mm

FL-05155 S M L



Opening mechanism
defined by female part

Weight
ca. 7 g

Dimensions (ø; height)
17,3 mm; 8,6 mm (without threaded shaft)

Punch hole for assembly
5,0 mm

Threaded shaft (length)
7,3 mm

Material
aluminium, steel (zinc coated)

Static breaking load
60 kg

Colour
aluminium

Assembly
screwing

For material thickness
7,0 mm

Sector

medical, transportation, outdoor, professionals, bags

- # Combination of screw and fastening component
- # Screwed into M5 threaded nut (shaft length 7 mm)
- # Ideal for applications in the mechanical engineering sector or on bikes
- # Compatible with L-size SNAP female counterparts

Note

Not suitable for safety-related applications.

The load capacity and the suitability of the fastener depend on the size of the components and specific application on the product.

SNAP fasteners always require a combination of a SNAP male part and a female part of the SNAP, SNAP pull or SNAP push product families.

SNAP male L bolt - M5 x 7mm

FL-05155 S M L



Opening mechanism
defined by female part

Weight
ca. 7 g

Dimensions (ø; height)
17,3 mm; 8,6 mm (without threaded shaft)

Punch hole for assembly
5,0 mm

Threaded shaft (length)
7,3 mm

Material
aluminium, steel (zinc coated)

Static breaking load
60 kg

Colour
black

Assembly
screwing

For material thickness
7,0 mm

Sector

medical, transportation, outdoor, professionals, bags

- # Combination of screw and fastening component
- # Black version
- # Screwed into M5 threaded nut (shaft length 7 mm)
- # Ideal for applications in the mechanical engineering sector or on bikes
- # Compatible with L-size SNAP female counterparts

Note

Not suitable for safety-related applications.

The load capacity and the suitability of the fastener depend on the size of the components and specific application on the product.

SNAP fasteners always require a combination of a SNAP male part and a female part of the SNAP, SNAP pull or SNAP push product families.

SNAP male L bolt - M5 x 17mm

FL-05156 S M L



Opening mechanism
defined by female part

Weight
ca. 9 g

Dimensions (ø; height)
17,3 mm; 8,6 mm (without threaded shaft)

Punch hole for assembly
5,0 mm

Threaded shaft (length)
17,3 mm

Material
aluminium, steel (zinc coated)

Static breaking load
60 kg

Colour
aluminium

Assembly
screwing

For material thickness
17,0 mm

Sector
transportation, outdoor, professionals, bags, medical

- # Combination of screw and fastening component
- # Screwed into M5 threaded nut (shaft length 7 mm)
- # Ideal for applications in the mechanical engineering sector or on bikes
- # Compatible with L-size SNAP female counterparts

Note
Not suitable for safety-related applications.

The load capacity and the suitability of the fastener depend on the size of the components and specific application on the product.

SNAP fasteners always require a combination of a SNAP male part and a female part of the SNAP, SNAP pull or SNAP push product families.

SNAP male L bolt - M5 x 17mm

FL-05156 S M L



Opening mechanism
defined by female part

Weight
ca. 9 g

Dimensions (ø; height)
17,3 mm; 8,6 mm (without threaded shaft)

Punch hole for assembly
5,0 mm

Threaded shaft (length)
17,3 mm

Material
aluminium, steel (zinc coated)

Static breaking load
60 kg

Colour
black

Assembly
screwing

For material thickness
17,0 mm

Sector
transportation, outdoor, professionals, bags, medical

- # Combination of screw and fastening component
- # Black version
- # Screwed into M5 threaded nut (shaft length 7 mm)
- # Ideal for applications in the mechanical engineering sector or on bikes
- # Compatible with L-size SNAP female counterparts

Note
Not suitable for safety-related applications.

The load capacity and the suitability of the fastener depend on the size of the components and specific application on the product.

SNAP fasteners always require a combination of a SNAP male part and a female part of the SNAP, SNAP pull or SNAP push product families.

SNAP male L 25 adjuster

FL-05099 S M L



Opening mechanism
defined by female part

Webbing width
25 mm

Weight
ca. 8 g

Dimensions (L×W×H)
37,8 × 35,7 × 16,0 mm

Material
PA66GF15

Static breaking load
30 kg

Colour
black

Assembly
strap, tri-glide

Sector
professionals, bags, medical

- # Threaded onto webbing and remains moveable after fitting
- # Version with split bar is also available (article no. 05299)
- # Ideal for diverse applications with straps, e.g. bags
- # Compatible with L-size SNAP female counterparts

Note
Not suitable for safety-related applications.

The load capacity and the suitability of the fastener depend on the size of the components and specific application on the product.

SNAP fasteners always require a combination of a SNAP male part and a female part of the SNAP, SNAP pull or SNAP push product families.

SNAP male L 25 adjuster split bar

FL-05299 S M L



Opening mechanism
defined by female part

Webbing width
25 mm

Weight
ca. 8 g

Dimensions (L×W×H)
37,7 × 35,7 × 16,1 mm

Material
PA66GF15

Static breaking load
30 kg

Colour
black

Assembly
strap, tri-glide

Sector

bags, outdoor, professionals

- # Threaded onto webbing and remains moveable after fitting
- # Retrofittable thanks to split bar
- # Ideal for diverse applications with straps, e.g. bags
- # Compatible with L-size SNAP female counterparts

Note

Not suitable for safety-related applications.

The load capacity and the suitability of the fastener depend on the size of the components and specific application on the product.

SNAP fasteners always require a combination of a SNAP male part and a female part of the SNAP, SNAP pull or SNAP push product families.

SNAP male L screw low

FL-05007 S M L



Opening mechanism
defined by female part

Weight
ca. 9 g

Dimensions
32,9 mm (Ø)

Height (top part; bottom part)
17,4 mm; 3,0 mm

Punch hole for assembly
20,0 mm

Material
PA66GF15

Static breaking load
30 kg

Colour
black

Assembly
threaded ring (included)

For material thickness
0,5 - 1,5 mm

Tools for assembly
front: TOOL 10; back: TOOL 3/TOOL 7/TOOL 23/face spanner

Sector

professionals, bags, medical

- # Version for a material thickness of 0,5-1,5 mm
- # Easy fitting with threaded ring and face spanner
- # Ideal for everyday applications, e.g. connecting bag modules, attaching saddlebags
- # Compatible with L-size SNAP female counterparts
- # [Click here](#) for information about the assembly tools

Note

Not suitable for safety-related applications.

The load capacity and the suitability of the fastener depend on the size of the components and specific application on the product.

SNAP fasteners always require a combination of a SNAP male part and a female part of the SNAP, SNAP pull or SNAP push product families.

SNAP male L screw high

FL-05008 S M L



Opening mechanism
defined by female part

Weight
ca. 10 g

Dimensions
32,9 mm (Ø)

Height (top part; bottom part)
17,4 mm; 5,5 mm

Punch hole for assembly
23,0 mm

Material
PA66GF15

Static breaking load
30 kg

Colour
black

Assembly
threaded ring (included)

For material thickness
1,5 - 2,5 mm

Tools for assembly
front: TOOL 10; back: TOOL 3/TOOL 7/TOOL 23/face spanner

Sector

medical, bags, professionals

- # Version for a material thickness of 1,5-2,5 mm
- # Easy fitting with threaded ring and face spanner
- # Ideal for everyday applications, e.g. connecting bag modules, attaching saddlebags
- # Compatible with L-size SNAP female counterparts
- # [Click here](#) for information about the assembly tools

Note

Not suitable for safety-related applications.

The load capacity and the suitability of the fastener depend on the size of the components and specific application on the product.

SNAP fasteners always require a combination of a SNAP male part and a female part of the SNAP, SNAP pull or SNAP push product families.

SNAP male L screw cap

FL-05009 S M L



Opening mechanism
defined by female part

Weight
ca. 11 g

Dimensions
32,5 mm (Ø)

Height (top part; bottom part)
17,4 mm; 6,6 mm

Material
PA66GF15

Static breaking load
30 kg

Colour
black

Assembly
threaded ring (included)

For material thickness
0,5 - 1,5 mm

Tools for assembly
front: TOOL 10; back: TOOL 3/TOOL 8/face spanner

Sector
medical, bags, professionals

- # Version for a material thickness of 0,5-1,5 mm
- # Easy fitting with threaded ring and face spanner
- # Ideal for applications in areas that require waterproof fasteners, e.g. outdoor
- # Compatible with L-size SNAP female counterparts
- # [Click here](#) for information about the assembly tools

Note
Is waterproof when fitted with an O-ring (O-ring included in the scope of delivery).

Not suitable for safety-related applications.

The load capacity and the suitability of the fastener depends on the size of the components and specific application on the product.

SNAP fasteners always require a combination of a SNAP male part and a female part of the SNAP, SNAP pull or SNAP push product families.

SNAP male L tube clip

FL-05232 S M L



Opening mechanism
pull/push

Weight
ca. 10 g

Dimensions (L×W×H)
40,0 × 30,0 × 40,0 mm

Pipe diameter
24,0 - 27,0 mm

Material
PA66GF15

Static breaking load
30 kg

Colour
black

Assembly
clip together

Sector
sports, professionals, bags, medical, transportation, outdoor

- # Attached to bar or pole with a diameter of 24-27 mm
- # Fitted with screws (included in the scope of delivery)
- # Compatible with the SNAP pull female L 25 and SNAP push L saddle adapter

Note
Direction specified by the geometry of fastener - option for freely rotatable version upon request.

Not suitable for safety-related applications.

The load capacity and the suitability of the fastener depend on the size of the components and specific application on the product.

SNAP fasteners always require a combination of a SNAP male part and a female part of the SNAP, SNAP pull or SNAP push product families.

SNAP male L 40 - RLS

FL-05250 S M L



Opening mechanism
defined by female part

Webbing width
40 mm

Weight
ca. 22 g

Dimensions (L×W×H)
55,4 × 46,7 × 14,1 mm

Material
PA6 GF, ABS

Static breaking load
30 kg

Colour
black

Assembly
strap, single bar

Sector
professionals, children, bags, medical

- # Designed for a 40 mm strap
- # Only allows opening in a single direction
- # Ideal for strap attaching, e.g. onto bags
- # Compatible with L-size SNAP female counterparts

Note
Not suitable for safety-related applications.

The load capacity and the suitability of the fastener depend on the size of the components and specific application on the product.

SNAP fasteners always require a combination of a SNAP male part and a female part of the SNAP, SNAP pull or SNAP push product families.

SNAP male L retractable

FL-05270 S M L



Opening mechanism
defined by female part

Weight
ca. 16 g

Dimensions (ø; height)
50 mm; 12,5 mm (retracted)

Punch hole for assembly
35,6 mm

Material
PA66GF

Static breaking load
30 kg

Colour
black

Assembly
screw thread

Tools for assembly
front: no tool; back: TOOL 2/TOOL 3/TOOL 22

Sector
bags, children, outdoor, professionals, transportation, sports

- # Flat surface, even after fitting
- # The locking mechanism emerges when combined with the female part
- # Ideal for diverse applications where protruding elements are unwelcome, e.g. in car boots or on modular bags
- # Compatible with L-size SNAP female counterparts

Note
Not suitable for safety-related applications.

The load capacity and the suitability of the fastener depend on the size of the components and specific application on the product.

SNAP fasteners always require a combination of a SNAP male part and a female part of the SNAP, SNAP pull or SNAP push product families.

SNAP male L sewable

FL-05454 S M L



Opening mechanism
defined by female part

Weight
ca. 6 g

Dimensions (ø; height)
40,8 mm; 12,6 mm

Punch hole for assembly
26 mm

Material
PA6

Static breaking load
30 kg

Colour
black

Assembly
sewing

For material thickness
up to 2,5 mm

Sector
medical, bags, apparel

- # Sewable fastener with alignment aid
- # Ideal for textile applications, e.g. apparel, bags
- # Compatible with L-size SNAP female counterparts

Note
Not suitable for safety-related applications.

The load capacity and the suitability of the fastener depend on the size of the components and specific application on the product.

SNAP fasteners always require a combination of a SNAP male part and a female part of the SNAP, SNAP pull or SNAP push product families.

SNAP male L sewable SB 20

FL-F5421 S M L



Opening mechanism
defined by female part

Webbing width
20 mm

Weight
ca. 7 g

Dimensions (L×W×H)
47,0 × 40,1 × 11,6 mm

Material
PA6

Static breaking load
30 kg

Colour
black

Assembly
sewing

For material thickness
up to 2,5 mm

Sector
bags, apparel, medical

- # Sewable fastener with single bar for additional strap
- # Designed for 20 mm wide strap or pull tab
- # Ideal for textile applications, e.g. as concealed fastener under bag flaps
- # Compatible with L-size SNAP female counterparts

Note
Not suitable for safety-related applications.

The load capacity and the suitability of the fastener depend on the size of the components and specific application on the product.

SNAP fasteners always require a combination of a SNAP male part and a female part of the SNAP, SNAP pull or SNAP push product families.

SNAP female S screw low

FL-05100 S M L



Opening mechanism
slide

Weight
ca. 6 g

Dimensions (ø; height)
32,7 mm; min. 9,5 mm

Punch hole for assembly
20,0 mm

Material
PA66GF15

Static breaking load
2 kg

Colour
black

Assembly
threaded ring (included)

For material thickness
0,5 - 1,5 mm

Tools for assembly
front: TOOL 6/TOOL 23; back: TOOL 3/TOOL 7/
TOOL 23

Sector

apparel, bags, medical

- # Version for materials with a thickness of 0,5-1,5 mm
- # Simple fitting with threaded ring (included)
- # Compatible with S-size SNAP male counterparts
- # **Click here** for information about the assembly tools

Note

Not suitable for safety-related applications.

The load capacity and the suitability of the fastener depend on the size of the components and specific application on the product.

SNAP fasteners always require a combination of a SNAP male part and a female part of the SNAP, SNAP pull or SNAP push product families.

SNAP female S screw high

FL-05200 S M L



Opening mechanism
slide

Weight
ca. 6 g

Dimensions (ø; height)
32,7 mm; min. 11,0 mm

Punch hole for assembly
23,0 mm

Material
PA66GF15

Static breaking load
2 kg

Colour
black

Assembly
threaded ring (included)

For material thickness
2,5 - 3,5 mm

Tools for assembly
front: TOOL 6/TOOL 23; back: TOOL 3/TOOL 7/
TOOL 23

Sector

apparel, medical, bags

- # Version for materials with a thickness of 2,5-3,5 mm
- # Simple fitting with threaded ring (included)
- # Compatible with S-size SNAP male counterparts
- # **Click here** for information about the assembly tools

Note

Not suitable for safety-related applications.

The load capacity and the suitability of the fastener depend on the size of the components and specific application on the product.

SNAP fasteners always require a combination of a SNAP male part and a female part of the SNAP, SNAP pull or SNAP push product families.

SNAP female S sewable

FL-05450 S M L



Opening mechanism
slide

Weight
ca. 3 g

Dimensions (ø; height)
30,0 mm; min. 8,5 mm

Punch hole for assembly
19,6 mm

Material
PA6, PA66GF15

Static breaking load
2 kg

Colour
black

Assembly
sewing, welding

Sector

apparel, bags, medical

- # Easy sewing onto materials thanks to the nylon strip
- # Ideal for textile applications, e.g. apparel
- # Compatible with S-size SNAP male counterparts

Note

Not suitable for safety-related applications.

The load capacity and the suitability of the fastener depend on the size of the components and specific application on the product.

SNAP fasteners always require a combination of a SNAP male part and a female part of the SNAP, SNAP pull or SNAP push product families.

SNAP female S round rivet

FL-05140 S M L



Opening mechanism
slide
Weight
ca. 5 g
Dimensions (ø; height)
42,5 mm; min. 5,5 mm
Punch hole for assembly
20,0 mm
Material
PA66GF15
Static breaking load
2 kg
Colour
black
Assembly
rivets (not included)

Sector
bags, medical

- # Recessed mounting with rivets (rivets not included in the scope of delivery)
- # Height after mounting min. 5,5 mm
- # Screw thread for optional additional mounting and added hold
- # Compatible with S-size SNAP male counterparts

Note
Not suitable for safety-related applications.

The load capacity and the suitability of the fastener depend on the size of the components and specific application on the product.

SNAP fasteners always require a combination of a SNAP male part and a female part of the SNAP, SNAP pull or SNAP push product families.

SNAP female S rivet V

FL-05300 S M L



Opening mechanism
slide
Weight
ca. 5 g
Dimensions (L×W×H)
40,0 × 25,0 × min. 14,0 mm
Material
PA66GF15
Static breaking load
2 kg
Colour
black
Assembly
rivets (not included)

Sector
bags, medical

- # Attached with rivets (not included)
- # Version with vertical opening direction
- # Ideal for applications with small loads
- # Compatible with S-size SNAP male counterparts

Note
Rivets are not included in the scope of delivery.
Not suitable for safety-related applications.

The load capacity and the suitability of the fastener depend on the size of the components and specific application on the product.

SNAP fasteners always require a combination of a SNAP male part and a female part of the SNAP, SNAP pull or SNAP push product families.

SNAP female S rivet H

FL-05400 S M L



Opening mechanism
slide
Weight
ca. 5 g
Dimensions (L×W×H)
40,0 × 25,0 × min. 14,0 mm
Material
PA66GF15
Static breaking load
2 kg
Colour
black
Assembly
rivets (not included)

Sector
bags, medical

- # Attached with rivets (not included)
- # Version with horizontal opening direction
- # Ideal for applications with small loads
- # Compatible with S-size SNAP male counterparts

Note
Rivets are not included in the scope of delivery.
Not suitable for safety-related applications.

The load capacity and the suitability of the fastener depend on the size of the components and specific application on the product.

SNAP fasteners always require a combination of a SNAP male part and a female part of the SNAP, SNAP pull or SNAP push product families.

SNAP female S screw cap

FL-05103 S M L



Opening mechanism
slide
Weight
ca. 7 g
Dimensions (ø; height)
32,7 mm; min. 16,5 mm
Punch hole for assembly
20,0 mm
Material
PA66GF15
Static breaking load
2 kg
Colour
black
Assembly
threaded ring with sealing
For material thickness
0,5 - 1,5 mm
Tools for assembly
front: TOOL 6/TOOL 23; back: TOOL 3/TOOL 8

Sector
apparel, bags, medical

- # Version for a material thickness of 0,5-1,5 mm
- # Easy fitting with threaded ring and face spanner
- # Ideal for bags that require waterproof fasteners
- # Compatible with S-size SNAP male counterparts
- # **Click here** for information about the assembly tools

Note
Is waterproof when fitted with an O-ring (included in the scope of delivery).

Not suitable for safety-related applications.

The load capacity and the suitability of the fastener depend on the size of the components and specific application on the product.

SNAP fasteners always require a combination of a SNAP male part and a female part of the SNAP, SNAP pull or SNAP push product families.

SNAP female S 15 adjuster H

FL-05452 S M L



Opening mechanism
slide
Webbing width
15 mm
Weight
ca. 4 g
Dimensions (L×W×H)
31,9 × 20,0 × 11,7 mm
Material
PA6
Static breaking load
2 kg
Colour
black
Assembly
strap, tri-glide

Sector
bags, medical

- # Threaded onto webbing and remains moveable after fitting
- # Ideal for diverse applications with 15 mm wide straps and low loads
- # Compatible with S-size SNAP male counterparts

Note
Not suitable for safety-related applications.

The load capacity and the suitability of the fastener depend on the size of the components and specific application on the product.

SNAP fasteners always require a combination of a SNAP male part and a female part of the SNAP, SNAP pull or SNAP push product families.

SNAP female S pin rivet X2

FL-05311 S M L



Opening mechanism
slide
Weight
ca. 3 g
Dimensions (L×W×H)
20,3 × 25,6 × 9,5 mm
Material
PA6
Static breaking load
2 kg
Colour
black
Assembly
screwing, pressed together

Sector
medical, bags, apparel

- # A small version for two pin rivets (not included)
- # No punch hole is required, pin rivets are not visible after fitting
- # Ideal for textile applications
- # Compatible with S-size SNAP male counterparts

Note
Pin rivets are only included in the scope of delivery for sample orders.

Not suitable for safety-related applications.

The load capacity and the suitability of the fastener depend on the size of the components and specific application on the product.

SNAP fasteners always require a combination of a SNAP male part and a female part of the SNAP, SNAP pull or SNAP push product families.

SNAP female S pin rivet X3

FL-05310 S M L



Opening mechanism
slide
Weight
ca. 4 g
Dimensions (L×W×H)
23,5 × 23,0 × 9,5 mm
Material
PA6
Static breaking load
2 kg
Colour
black
Assembly
screwing, pressed together

Sector
medical, bags, apparel

- # A small version for three pin rivets (not included)
- # No punch hole is required, pin rivets are not visible after fitting
- # Ideal for textile applications
- # Compatible with S-size SNAP male counterparts

Note
Pin rivets are only included in the scope of delivery for sample orders.

Not suitable for safety-related applications.

The load capacity and the suitability of the fastener depend on the size of the components and specific application on the product.

SNAP fasteners always require a combination of a SNAP male part and a female part of the SNAP, SNAP pull or SNAP push product families.

SNAP female S 20 Leather

FL-05197 S M L



Opening mechanism
slide
Webbing width
20 mm
Weight
ca. 9 g
Dimensions (L×W×H)
60,0 × 28,0 × 12,0 mm
Material
PA66GF15
Static breaking load
15 kg
Colour
black
Assembly
strap

Sector
bags, medical

- # Designed for 20 mm wide straps
- # Elegant fastener for handbags, backpacks, and other bags
- # Compatible with S-size SNAP male counterparts

Note
Not suitable for safety-related applications.

The load capacity and the suitability of the fastener depend on the size of the components and specific application on the product.

SNAP fasteners always require a combination of a SNAP male part and a female part of the SNAP, SNAP pull or SNAP push product families.

SNAP female M screw

FL-05500 S M L



Opening mechanism
slide
Weight
ca. 11 g
Dimensions (ø; height)
40,0 mm; min. 13,5 mm
Punch hole for assembly
27,2 mm
Material
PA66GF15
Static breaking load
15 kg
Colour
black
Assembly
threaded ring (included)
For material thickness
0,5 - 2,5 mm
Tools for assembly
front: no tool; back: TOOL 1/TOOL 3/TOOL 22

Sector
bags, professionals, medical

- # Version for materials with a thickness of 0,5-2,5 mm
- # Simple fitting with threaded ring (included)
- # Compatible with M-size SNAP male counterparts
- # **Click here** for information about the assembly tools

Note
Not suitable for safety-related applications.

The load capacity and the suitability of the fastener depend on the size of the components and specific application on the product.

SNAP fasteners always require a combination of a SNAP male part and a female part of the SNAP, SNAP pull or SNAP push product families.

SNAP female M inset screw

FL-05511 S M L



Opening mechanism
slide laterally

Weight
ca. 15 g

Dimensions
50 mm (Ø threaded ring)

Dimensions (ø; height)
45 mm; 13 mm

Punch hole for assembly
38,0 mm

Material
PA66GF15, stainless steel (magnetized)

Static breaking load
30 kg

Colour
black

Assembly
threaded ring (included)

Tools for assembly
front: TOOL 31; back TOOL 3

Sector

bags, children, outdoor, professionals, transportation, sports

- # Flush integration - no protruding elements on surfaces
- # Inset locking mechanism in indentation
- # Attached to materials, e.g. textiles, through a punched hole (rec. hole diameter 38 mm) using the threaded ring - [click here](#) for additional information about assembly and required TOOLS
- # Compatible with M-sized SNAP male counterparts

Note

Not suitable for safety-related applications.

The load capacity and the suitability of the fastener depend on the size of the components and specific application on the product.

SNAP fasteners always require a combination of a SNAP male part and a female part of the SNAP, SNAP pull or SNAP push product families.

SNAP female M inset anchor

FL-05512 S M L



Opening mechanism
slide laterally

Weight
ca. 14 g

Dimensions
40,0 mm (bolt circle Ø)

Dimensions (ø; height)
45,0 mm; 13,7 mm (retracted & incl. anchor)

Material
PA66GF15, stainless steel (magnetized)

Static breaking load
30 kg

Colour
black

Assembly
screw thread, threaded ring (included)

Tools for assembly
TOOL 31

Sector

bags, children, outdoor, professionals, sports, transportation

- # Flush integration - no protruding elements on surfaces
- # Inset locking mechanism in indentation
- # Screwed into thick materials, e.g. wood (rec. hole diameter 40 mm) - [click here](#) for additional information about assembly and required TOOLS
- # Fastening component and anchor add-on can be unscrewed and removed after assembly if needed
- # Compatible with M-sized SNAP male counterparts

Note

Not suitable for safety-related applications.

The load capacity and the suitability of the fastener depend on the size of the components and specific application on the product.

SNAP fasteners always require a combination of a SNAP male part and a female part of the SNAP, SNAP pull or SNAP push product families.

SNAP female L screw

FL-05600 S M L



Opening mechanism
slide

Weight
ca. 17 g

Dimensions (ø; height)
50,0 mm; min 15,1 mm

Punch hole for assembly
36,4 mm

Material
PA66GF15, PC-ABS

Static breaking load
30 kg

Colour
black

Assembly
threaded ring (included)

For material thickness
0,5 - 2,5 mm

Tools for assembly
front: no tool; back: TOOL 2/TOOL 3/TOOL 22

Sector

professionals, bags, medical

- # Version for materials with a thickness of 0,5-2,5 mm
- # Simple fitting with threaded ring (included)
- # Compatible with L-size SNAP male counterparts
- # [Click here](#) for information about the assembly tools

Note

Not suitable for safety-related applications.

The load capacity and the suitability of the fastener depend on the size of the components and specific application on the product.

SNAP fasteners always require a combination of a SNAP male part and a female part of the SNAP, SNAP pull or SNAP push product families.

SNAP female L screw extra grip

FL-05605 S M **L**



Opening mechanism
slide

Weight
ca. 17 g

Dimensions (ø; height)
50,0 mm; min 15,1 mm

Material
PA66GF15, PC-ABS

Static breaking load
30 kg

Colour
black

Assembly
threaded ring (included)

For material thickness
0,5 - 2,5 mm

Tools for assembly
front: no tool; back: TOOL 2/TOOL 3/TOOL 22

Sector

bags, apparel, professionals, medical

- # For materials with a thickness of 0,5-2,5 mm
- # Variant of the SNAP female L screw (article no. 05600) - increased impulse required to disengage the locking mechanism
- # Simple fitting with threaded ring (included)
- # Compatible with L-size SNAP male counterparts
- # **Click here** for information about the assembly tools

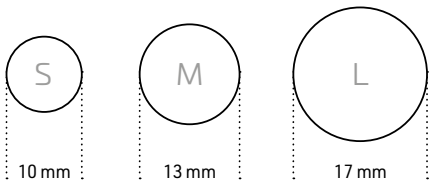
Note

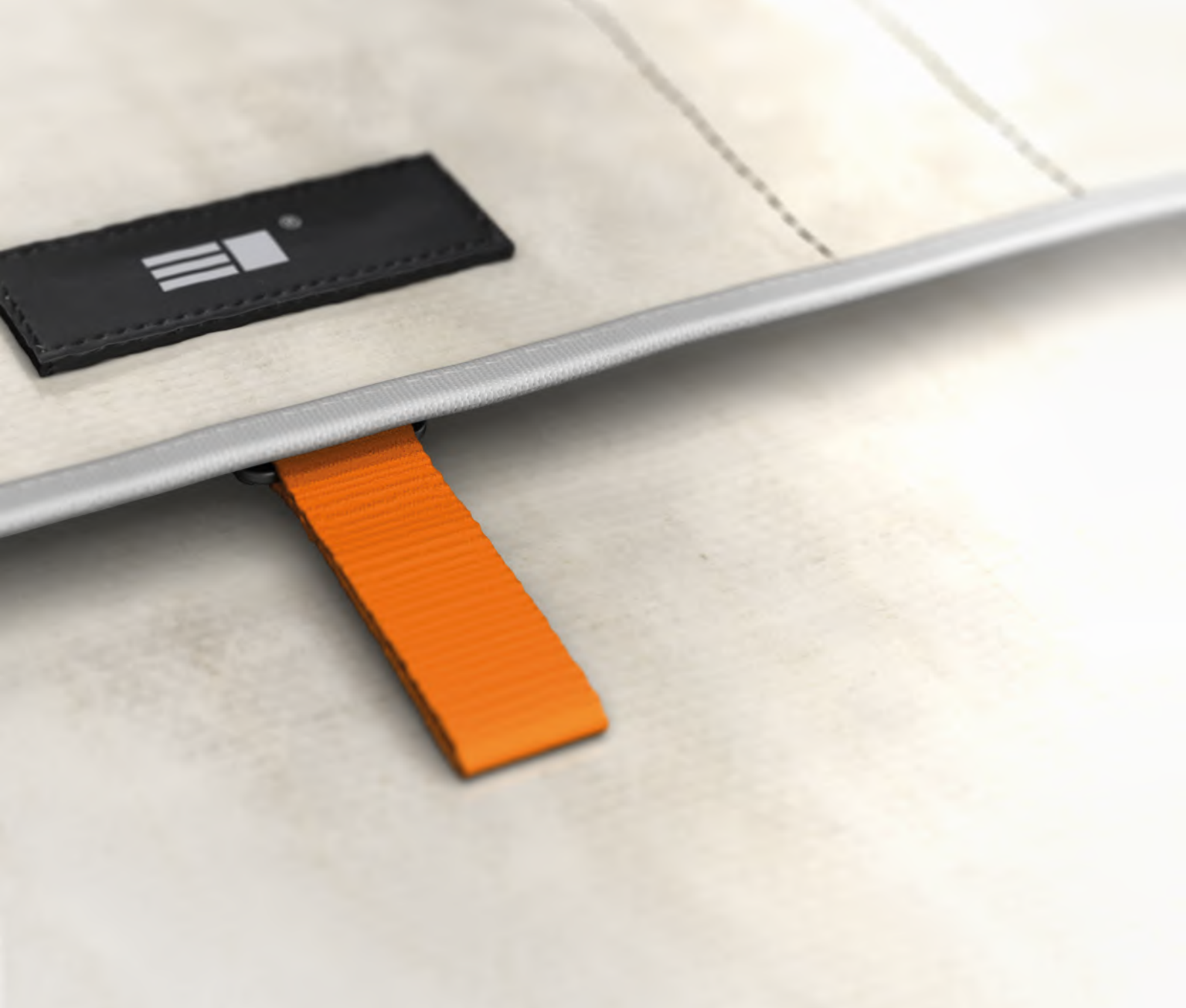
Not suitable for safety-related applications.

The load capacity and the suitability of the fastener depend on the size of the components and specific application on the product.

SNAP fasteners always require a combination of a SNAP male part and a female part of the SNAP, SNAP pull or SNAP push product families.

Snap-in mounting foot sizes - FIDLOCK **SNAP** products S M L





One fastener, one pull – convenient, safe and invisible

The SNAP pull series combines all assets of the innovative FIDLOCK concept with an “invisible look”. A quick pull is enough to open the fastener. Thanks to the magnets, it closes automatically and securely clicks into place. It's single-handed operation is accompanied by the concealed mounting of the SNAP pull, generating great benefits for customers. Products don't only gain value due to a high-performing fastener. Depending on the implementation of the fastener on the product, designers also receive great freedom - e.g. by designing bags and school bags with an invisible, easy-to-use closure on the bag flap. By attaching a logo plate, the SNAP pull can be riveted to the rear side. Other versions are easily threaded onto webbing and remain moveable after fitting, offering great adjustability. SNAP pull fasteners are available in the different sizes and stability classes S, M, L (see sizes and range of application on the title page of the SNAP product family). As with most FIDLOCK fasteners, we offer customization possibilities, allowing you to adapt the fastener to design requirements and your brand.

Patents: Fitting behind the material of e.g. a bag flap and the easy pull-to-open functionality with automatic closure are innovative identifying features the SNAP pull magnetic fasteners. Therefore, products of the SNAP pull family are protected by at least one of the following patents:

US8794682, AU2007272165, CA2681141, CN101646362, EP2040572 (AT, DE, FR, GB, IT, NL), HK1140388, IN309795, JP5060554, KR101130654, RU2415623, US8430434, EP2436280 (AT, CH, DE, ES, FR, GB, IT, NL, PL, TR), CN101925313, EP2252176 (AT, DE, FR, GB), US8353544, VN10019341, CN103957739, EP2782468 (AT, DE, FR, GB, IT), US9555935

You can find detailed and updated information on fidlock.com/en/patents.

SNAP pull

male/female – flexible fastener solutions

The SNAP pull product family consists of female parts (2), which can be combined with almost any male part (1) in the SNAP product family. The variations allow for great flexibility in design and processing. This makes riveted fastener solutions available for various materials and material thicknesses. Versions for webbing are also available. When configuring your fastener, please pay attention to the notes in the technical data.



SNAP pull female S rivet

05017-000002(BLK) S M L



Opening mechanism
pull
Pull tab width
20 mm
Weight
ca. 11 g
Dimensions (L×W×H)
47,0 × 53,0 × 11,0 mm
Material
PA66GF15
Static breaking load
2 kg
Colour
black
Assembly
rivets (not included)

Sector
bags, medical

- # Easy pull opening mechanism
- # Can be mounted invisibly, e.g. on the reverse side of bag flaps or logo plates
- # Fitted with rivets (not included)
- # Compatible with S-size SNAP male counterparts

Note
Not suitable for safety-related applications.

SNAP pull fasteners require a combination of a SNAP pull female component and a male part of the SNAP product family.

Rivets are not included in the scope of delivery.

SNAP pull female M rivet

05110-000012(BLK) S M L



Opening mechanism
pull
Pull tab width
20 mm
Weight
ca. 13 g
Dimensions (L×W×H)
47,8 × 60,8 × 11,7 mm
Material
PA66GF15
Static breaking load
15 kg
Colour
black
Assembly
rivets (not included)

Sector
bags, medical, professionals

- # Easy pull opening mechanism
- # Can be mounted invisibly, e.g. on the reverse side of bag flaps or logo plates
- # Fitted with rivets (not included)
- # Compatible with M-size SNAP male counterparts

Note
Not suitable for safety-related applications.

SNAP pull fasteners require a combination of a SNAP pull female component and a male part of the SNAP product family.

Rivets are not included in the scope of delivery.

SNAP pull female M 25 adjuster

05118-000002(BLK) S M L



Opening mechanism
pull
Webbing width
25 mm
Pull tab width
20 mm
Weight
ca. 14 g
Dimensions (L×W×H)
47,8 × 58,7 × 11,7 mm
Material
PA66GF15
Static breaking load
15 kg
Colour
black
Assembly
strap, tri-glide

Sector
bags, medical, outdoor, professionals

- # Threaded onto webbing and remains moveable after fitting
- # Version with split bar is also available (article no. 05119)
- # Ideal for diverse bags and strap systems
- # Compatible with M-size SNAP male counterparts

Note
Not suitable for safety-related applications.

SNAP pull fasteners require a combination of a SNAP pull female component and a male part of the SNAP product family.

SNAP pull female M 25 adjuster split bar

05119-000002(BLK) S M L



Opening mechanism
pull
Webbing width
25 mm
Pull tab width
20 mm
Weight
ca. 14 g
Dimensions (L×W×H)
47,8 × 58,7 × 11,7 mm
Material
PA66GF15
Static breaking load
15 kg
Colour
black
Assembly
strap, tri-glide

Sector
bags, outdoor, professionals, medical

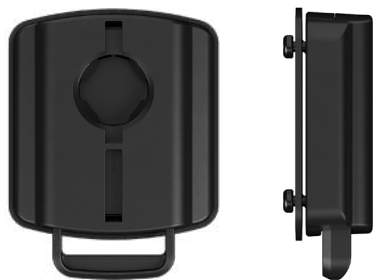
- # Threaded onto webbing and remains moveable after fitting
- # Retrofittable thanks to split bar
- # Ideal for diverse applications with straps, e.g. bags, MOLLE systems
- # Compatible with M-size SNAP male counterparts

Note
Not suitable for safety-related applications.

SNAP pull fasteners require a combination of a SNAP pull female component and a male part of the SNAP product family.

SNAP pull female L

05180-000002(BLK) S M L



Opening mechanism
pull
Pull tab width
25 mm
Weight
ca. 30 g
Dimensions (L×W×H)
65,2 × 49,4 × 16,1 mm
Material
PA66GF15, POM, PP
Static breaking load
60 kg
Colour
black
Assembly
with screws (included)

Sector
bags, medical, professionals

- # Easy pull opening mechanism
- # Can be mounted on the reverse side of bag flaps or logo plates
- # Fitted with screws (included)
- # Compatible with L-size SNAP male counterparts

Note
Not suitable for safety-related applications.

SNAP pull fasteners require a combination of a SNAP pull female component and a male part of the SNAP product family.

Screws are included in the scope of delivery.

Version without counter plate available (article no. 05181).



Fixing, changing and adjusting – the fastener solution for maximum flexibility with only one push

With the SNAP push series, FIDLOCK offers an easy-to-use snap fastener that can be opened comfortably yet securely – with just a fingertip. In line with the FIDLOCK concept, it includes an automatic closing mechanism, providing easy single-handed operation. The reliable SNAP push also triumphs with a maximum of flexibility optimally suited for diverse purposes, depending on the implementation of the fastener on the product: for carrier bags, rucksacks or even school bags. A simple “push” of the button to release, a snap to close or attach, and incredibly versatile possibilities guarantee Function+ Fun. The fasteners are available in the different sizes and stability classes S, M, L (see sizes and range of application on the title page of the SNAP product family). With versions for different mounting types, the SNAP push series offers adjustable or fixed fastening. Additionally, SNAP push products can be individually configured or adapted to individual brands or product designs upon request.

Patents: Simply push to open – this innovative opening mechanism of the SNAP push fasteners creates special ease of use and offers unique features for child-friendly products. Therefore, products of the SNAP push family are protected by at least one of the following patents:

US8794682, AU2007272165, CA2681141, CN101646362, EP2040572 (AT, DE, FR, GB, IT, NL), HK1140388, IN309795, JP5060554, KR101130654, RU2415623, US8430434, EP2436280 (AT, CH, DE, ES, FR, GB, IT, NL, PL, TR), CN101925313, EP2252176 (AT, DE, FR, GB), US8353544, VN10019341, CN103957739, EP2782468 (AT, DE, FR, GB, IT), US9555935

You can find detailed and updated information on fidlock.com/en/patents.

SNAP push

male/female – flexible fastener solutions

The SNAP push product family consists of female parts (1) of a complete set. They are paired with compatible male counterparts (2), belonging to the SNAP series. Product designers are provided with the appropriate versions and fittings for different materials and material thicknesses. Please note the information provided in the technical details when customizing an individual fastener.



SNAP push female S 15 SB

F5108-000002(BLK) S M L



Opening mechanism
push
Webbing width
15 mm
Weight
ca. 7 g
Dimensions (L×W×H)
52,5 × 21,2 × 11,1 mm
Material
PA66GF15
Static breaking load
2 kg
Colour
black
Assembly
strap, single bar

- Sector
bags
- # Single bar only for fixed attachment to 15 mm wide strap
 - # Version with ladderlock available (article no. F5104)
 - # High comfort fastener on bags, e.g. for children
 - # Compatible with S-size SNAP male counterparts

Note
Not suitable for safety-related applications.
SNAP push fasteners require a combination of a SNAP push female component and a male part of the SNAP product family.

SNAP push female S 15 LL

F5104-000002(BLK) S M L



Opening mechanism
push
Webbing width
15 mm
Weight
ca. 8 g
Dimensions (L×W×H)
58,0 × 21,2 × 11,1 mm
Material
PA66GF15
Static breaking load
2 kg
Colour
black
Assembly
strap, ladderlock

- Sector
bags
- # Ladderlock for adjustable 15 mm wide strap
 - # Version with single bar available (article no. F5108)
 - # Ideal for adjusting, aligning and fastening on bags
 - # Compatible with S-size SNAP male counterparts

Note
Not suitable for safety-related applications.
SNAP push fasteners require a combination of a SNAP push female component and a male part of the SNAP product family.

SNAP push female S 20 LL

F6040-000002(BLK) S M L



Opening mechanism
push
Webbing width
20 mm
Weight
ca. 11 g
Dimensions (L×W×H)
64,4 × 26,0 × 11,1 mm
Material
PA66GF15
Static breaking load
2 kg
Colour
black
Assembly
strap, ladderlock

- Sector
bags
- # Ladderlock for adjustable strap
 - # Designed for 20 mm wide webbing
 - # Ideal for adjusting, aligning and fastening on bags
 - # Compatible with S-size SNAP male counterparts

Note
Not suitable for safety-related applications.
SNAP push fasteners require a combination of a SNAP push female component and a male part of the SNAP product family.

SNAP push female M 25 LL

F5120-000002(BLK) S M L



Opening mechanism
push
Webbing width
25 mm
Weight
ca. 13 g
Dimensions (L×W×H)
65,2 × 30,4 × 12,6 mm
Material
PA66GF15
Static breaking load
15 kg
Colour
black
Assembly
strap, ladderlock

Sector
professionals, bags

- # Ladderlock for adjustable strap
- # Designed for 25 mm wide webbing
- # Ideal for adjusting, aligning and fastening on bags
- # Compatible with M-size SNAP male counterparts

Note
Not suitable for safety-related applications.
SNAP push fasteners require a combination of a SNAP push female component and a male part of the SNAP product family.

SNAP push female L 25 LL

F5005-000012(BGR) S M L



Opening mechanism
push
Webbing width
25 mm
Weight
ca. 18 g
Dimensions (L×W×H)
78,0 × 32,0 × 16,0 mm
Material
PA66GF15
Static breaking load
30 kg
Assembly
strap, ladderlock

Sector
professionals, bags

- # Ladderlock for adjustable strap
- # Designed for 25 mm wide webbing
- # Ideal for adjusting, aligning and fastening on bags
- # Compatible with L-size SNAP male counterparts

Note
Not suitable for safety-related applications.
SNAP push fasteners require a combination of a SNAP push female component and a male part of the SNAP product family.

SNAP push female L fabric mount

F5015-000022(BLK) S M L



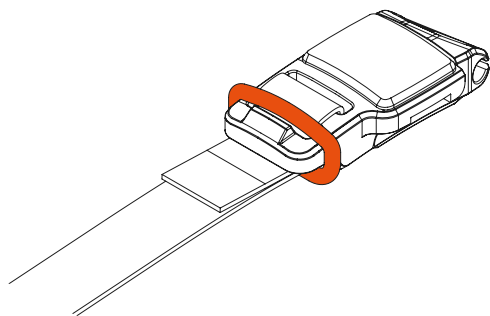
Opening mechanism
push
Weight
ca. 26 g
Dimensions (L×W×H)
56,7 × 44,3 × 26,0 mm
Material
PA66GF15, stainless steel
Static breaking load
60 kg
Colour
black
Assembly
pressed together

Sector
bags, children

- # Compact design with integrated button
- # Cold forged fitting
- # Can be mounted directly onto flaps, e.g. of bags
- # Easy-to-use fastener for schools bags and other children's bags
- # Compatible with L-size SNAP male counterparts

Note
Not suitable for safety-related applications.
SNAP push fasteners require a combination of a SNAP push female component and a male part of the SNAP product family.

SNAP buckle piping - Fixating the webbing with rubber O-ring



Note

This illustration is only valid for the SNAP buckle piping (article no. F6030) and visualises how the webbing is fixed to the buckle with a rubber ring.



The automatic fastener – easy magnetic closure that holds under extremely high tensile forces

FIDLOCK is presenting the next generation of the well-known buckle: the SNAP buckle product family. The innovative fastening system is based on the tried-and-tested FIDLOCK concept, which usefully combines the advantages of a magnetic and a snap fastener. The SNAP buckle closes automatically and opens by easily sliding laterally: convenient, functional and fun. The buckles allow operation with one hand, leaving a spare hand to ensure users' safety. Product variants of the SNAP buckle are available for straps with a 15 mm, 20 mm, 30 mm and 40 mm width. It is also available with a piping fitting option, especially for chest strap fasteners. Therefore, the product family offers versions for diverse application areas. Helmet manufacturers can find suitable fastening solutions in the SNAP helmet buckle product family, featuring the same design and comfort of the SNAP buckles but meticulously adapted to the unique requirements of helmets.

Patents: The SNAP buckles are a functional alternative to conventional buckles. Magnetic and mechanical features allow convenient and quick single-handed use. Therefore, products of the SNAP buckle and SNAP buckle flat families are protected by at least one of the following patents:

SNAP buckle: CN102292006, EP2389084 (DE, ES, FR, GB, IT, PL, TR), US8794682, AU2007272165, CA2681141, CN101646362, EP2040572 (AT, DE, FR, GB, IT, NL), HK1140388, IN309795, JP5060554, KR101130654, RU2415623, US8430434, EP2436280 (AT, CH, DE, ES, FR, GB, IT, NL, PL, TR), CN101925313, EP2252176 (AT, DE, FR, GB), US8353544, VN10019341

SNAP buckle flat: CN102292006, EP2389084 (DE, ES, FR, GB, IT, PL, TR), US8794682, AU2007272165, CA2681141, CN101646362, EP2040572 (AT, DE, FR, GB, IT, NL), HK1140388, IN309795, JP5060554, KR101130654, RU2415623, US8430434, EP2436280 (AT, CH, DE, ES, FR, GB, IT, NL, PL, TR)

SNAP buckle flat 40 reed switch: US8794682, AU2007272165, CA2681141, CN101646362, EP2040572 (AT, DE, FR, GB, IT, NL), HK1140388, IN309795, JP5060554, KR101130654, RU2415623, US8430434, EP2436280 (AT, CH, DE, ES, FR, GB, IT, NL, PL, TR)

You can find detailed and updated information on fidlock.com/en/patents.

SNAP buckle 15

F6020-000002 (BLK)



Opening mechanism
slide laterally

Webbing width
15 mm

Weight
ca. 11 g

Dimensions (L×W×H)
46,4 × 29,8 × 13,9 mm

Material
PA66GF30

Static breaking load
55 kg

Colour
black

Assembly
strap, ladderlock, single bar

Sector
outdoor, professionals, sports, transportation, bags

- # Designed for 15-16 mm wide webbing
- # Ladderlock on one side for strap adjustment
- # Ideal for standard applications, e.g. bags, chest straps, apparel

Note
Not suitable for safety-related applications.
The SNAP buckle features our FIDLOCK logo.

SNAP buckle 20

F6021-000002 (BLK)



Opening mechanism
slide laterally

Webbing width
20 mm

Weight
ca. 15 g

Dimensions (L×W×H)
46,8 × 27,5 × 13,1 mm

Material
PA66GF30

Static breaking load
55 kg

Colour
black

Assembly
strap, ladderlock, single bar

Sector
outdoor, professionals, sports, transportation, bags

- # Designed for 20 mm wide webbing
- # Ladderlock on one side for strap adjustment
- # Ideal for standard applications, e.g. bags, chest straps, apparel

Note
Also available as a version with transparent material.
Click here for further information.
Not suitable for safety-related applications.
The SNAP buckle features our FIDLOCK logo.

SNAP buckle 20 RC

F6021-000002 (5415)R



Opening mechanism
slide laterally

Webbing width
20 mm

Weight
12,50 g

Dimensions (L×W×H)
46,8 × 27,5 × 13,1 mm

Material
PA6 GF, NdFeB, epoxy

Colour
5415

Assembly
single bar, ladderlock, strap



Sector
outdoor, professionals, bags, sports

- # Made from recycled plastic
- # Designed for 20 mm wide webbing
- # Ladderlock on one side for strap adjustment
- # Ideal for standard applications, e.g. bags, chest straps, apparel

Note
Not suitable for safety-related applications.
The SNAP buckle features our FIDLOCK logo.
Due to the recycled material dark spots may appear.

SNAP buckle 20 RC

F6021-000002 (BLK)R



Opening mechanism
slide laterally

Webbing width
20 mm

Weight
12,50 g

Dimensions (L×W×H)
46,8 × 27,5 × 13,1 mm

Material
PA6 GF, NdFeB, epoxy

Colour
black

Assembly
strap, ladderlock, single bar



Sector
bags, sports, professionals, outdoor

Designed for 20 mm wide webbing

Ladderlock on one side for strap adjustment

Ideal for standard applications, e.g. bags, chest straps, apparel

Made from recycled plastic

Note
Not suitable for safety-related applications.

The SNAP buckle features our FIDLOCK logo.

SNAP buckle combi 15

F6010-000002 (BLK)



Opening mechanism
slide laterally

Webbing width
15 mm

Weight
ca. 9 g

Dimensions (L×W×H)
36,5 × 25,0 × 13,5 mm

Material
PA66GF15

Static breaking load
2 kg

Colour
black

Assembly
strap, screw thread, ladderlock

Sector
professionals, bags, outdoor, sports, transportation

Combination of SNAP buckle and SNAP

Fitting with 15 mm wide strap and through punch hole in materials

Ladderlock for strap adjustment

Ideal for attaching e.g. chest to shoulder strap

Note
As a courtesy, a high and a low SNAP male part are included in sample orders.

When placing a bulk order, please specify whether you need high or low SNAP male parts for combination.

Alternatively, the combi buckle also is compatible with the SNAP male S spring and SNAP male S sewable adjuster.

Not suitable for safety-related applications.

The SNAP buckle features our FIDLOCK logo.

SNAP buckle combi 20

F6011-000002 (BLK)



Opening mechanism
slide laterally

Webbing width
20 mm

Weight
ca. 9 g

Dimensions (L×W×H)
37,0 × 27,0 × 13,5 mm

Material
PA66GF15

Static breaking load
2 kg

Colour
black

Assembly
screw thread, strap, ladderlock

Sector
outdoor, sports, professionals, transportation, bags

Combination of SNAP buckle and SNAP

Fitting with 20 mm wide strap and through punch hole in materials

Ladderlock for strap adjustment

Ideal for attaching e.g. chest to shoulder strap

Note
As a courtesy, a high and a low SNAP male part are included in sample orders.

When placing a bulk order, please specify whether you need high or low SNAP male parts for combination.

Alternatively, the combi buckle is also compatible with the SNAP male S spring and SNAP male S sewable adjuster.

Not suitable for safety-related applications.

The SNAP buckle features our FIDLOCK logo.

SNAP buckle piping 15

F6030-000002 (BLK)



Opening mechanism
slide laterally

Webbing width
15 mm

Weight
ca. 11 g

Dimensions (L×W×H)
51,5 × 29,9 × 13,7 mm

Material
PA66GF15

Static breaking load
depending on application

Colour
black

Assembly
strap, piping, ladderlock

Sector
outdoor, sports, professionals, transportation, bags

- # Designed for 15-16 mm wide straps
- # Attached to webbing and piping
- # Ladderlock on one side for strap adjustment
- # Developed for chest straps

Note
Webbing can be fixed to the ladderlock with a rubber O-ring (O-ring not included in the scope of delivery).
Not suitable for safety-related applications.
The SNAP buckle features our FIDLOCK logo.

SNAP buckle flat 20 softline RC

F8090-000001 (BLK)R

New



Weight
14,9 g

Material
PA6, PA6 GF, NdFeB, epoxy

Colour
black

Assembly
strap



Sector
apparel, bags, footwear

- # All new soft design line: FIDLOCK design DNA softline
- # First snap buckle flat for webbing width 20 mm
- # Surface structure for exciting design to indicate touch points
- # Made with recycled plastic
- # Hidden singlebar on male part

Note
Not suitable for safety-related applications.
The SNAP buckle features our FIDLOCK logo.

SNAP buckle flat 25

F8040-000042 (BLK)



Opening mechanism
slide laterally

Webbing width
25 mm

Weight
ca. 14 g

Dimensions (L×W×H)
56,2 × 36,4 × 10,2 mm

Material
PA66GF15

Colour
black

Assembly
strap, ladderlock, single bar

Sector
outdoor, professionals, sports, transportation, bags, apparel

- # Buckle with particularly flat design
- # Version for 25 mm wide webbing
- # Ladderlock on one side for strap adjustment
- # Ideal for diverse applications, e.g. bags, belts, apparel

Note
Not suitable for safety-related applications.
The SNAP buckle features our FIDLOCK logo.

SNAP buckle flat 30

F8010-000012 (BLK)



Opening mechanism
slide laterally
Webbing width
30 mm
Weight
ca. 21 g
Dimensions (L×W×H)
62,9 × 42,0 × 11,3 mm
Material
ABS
Static breaking load
45 kg
Colour
black
Assembly
strap, ladderlock, single bar

Sector
outdoor, professionals, sports, transportation, bags, apparel

- # Buckle with particularly flat design
- # Version for 30 mm wide webbing
- # Ladderlock on one side for strap adjustment
- # Ideal for diverse applications, e.g. bags, belts, apparel

Note
Also available as a version with transparent material.
Click here for further information.

Not suitable for safety-related applications.

The SNAP buckle features our FIDLOCK logo.

SNAP buckle flat 40

F8022-000002 (BLK)



Opening mechanism
slide laterally
Webbing width
40 mm
Weight
ca. 25 g
Dimensions (L×W×H)
64,1 × 52,8 × 11,8 mm
Material
PA66GF15, PC-ABS
Static breaking load
40 kg
Colour
black
Assembly
strap, ladderlock, single bar

Sector
outdoor, professionals, sports, transportation, bags, apparel

- # Buckle with particularly flat design
- # Version for 40 mm wide webbing
- # Ladderlock on one side for strap adjustment
- # Ideal for diverse applications, e.g. bags, belts, apparel

Note
Not suitable for safety-related applications.

The SNAP buckle features our FIDLOCK logo.

SNAP buckle flat 40 with reed switch

08027-000011 (BLK)



Opening mechanism
slide laterally
Webbing width
40 mm
Weight
ca. 25 g
Dimensions (L×W×H)
74,0 × 48,4 × 14,0 mm
Cable length
300,0 mm
Material
PA66GF15
Static breaking load
40 kg
Colour
black
Assembly
strap, ladderlock, single bar

Sector
bags, professionals, transportation, children

- # Integrated reed switch
- # Open buckle for closed circuit, close buckle to deactivate the circuit
- # Ideal for anti-theft devices or electronic components (depending on the implementation of the fastener on the product)

Note
The plug is a Molex 39-01-2020.

No logo print possible.

Not suitable for safety-related applications.

SNAP buckle *flat 25 electrified 75cm with plug*

F8043-001301 (BLK)



Opening mechanism
slide laterally

Weight
ca. 32 g

Dimensions (L×W×H)
61,2 × 40,6 × 25,2 mm

Cable length
75 cm

Material
PA66GF, PC

Static breaking load
38 kg

Colour
black

Assembly
ladderlock, single bar, strap

Sector
professionals, transportation, bags

- # Innovative combination of magnetic fastener and reed switch
- # Buckle detects whether it is open or closed
- # CO version (normally closed) – the circuit is closed when the buckle is open
- # Built-in LED independently controllable
- # Version with plug and 75 cm cable length
- # Version suitable for safety applications, e.g. airbag vests

Note
Different configurations are available, e.g. with varying lengths of cable, with or without a plug or as CC version (normally open – the circuit is closed when the buckle is closed).

Please refer to the **safety instructions & recommendations**.



Increased safety thanks to the single-handed operation, even when wearing gloves

With the SNAP helmet buckle product family, FIDLOCK revolutionized the traditional helmet buckle. Thanks to the FIDLOCK concept, the SNAP helmet buckle opens by simply sliding laterally – with only two fingers. Even gloves don't prevent a quick and effortless one-handed operation. Unlike other helmet buckles, the SNAP helmet buckle closes automatically, eliminating the risk of pinching the skin. Due to carbon-fibre and long-fibre reinforced nylon, the SNAP helmet buckles achieve the highest levels of stability and static breaking loads of up to 80 kg. This innovative and particularly safe product family is available for 15 to 20 mm wide, single- or double-layered straps and serves a variety of standards in the sports helmet industry.

A quick and easy way to compare our diverse helmet buckle models is by taking a quick look at our helmet buckle overview, summarizing essential information.

Download helmet buckle overview

Patents: The SNAP helmet buckles revolutionized helmet fasteners. Placed under the chin, the single-handed use and pinch-free closing mechanism create great advantages. Therefore, products of the SNAP helmet buckle family are protected by at least one of the following patents:

CN102292006, EP2389084 (DE, ES, FR, GB, IT, PL, TR), US8794682, AU2007272165, CA2681141, CN101646362, EP2040572 (AT, DE, FR, GB, IT, NL), HK1140388, IN309795, JP5060554, KR101130654, RU2415623, US8430434, EP2436280 (AT, CH, DE, ES, FR, GB, IT, NL, PL, TR), CN101925313, EP2252176 (AT, DE, FR, GB), US8353544, VN10019341

You can find detailed and updated information on **fidlock.com/en/patents**.

SNAP helmet buckle 15 durethan

F7020-001022(BLK)



Opening mechanism
slide laterally

Webbing width
15 mm

Weight
ca. 12 g

Dimensions (L×W×H)
46,4 × 29,8 × 13,9 mm

Material
PA6GFCF30, ABS

Static breaking load
65 kg

Colour
black

Assembly
strap, ladderlock, single bar

Sector
helmets

- # Helmet buckle for 15 mm wide webbing
- # Static breaking load of up to 65 kg
- # Ladderlock on one side for strap adjustment

Note
Also available with clip for thinner straps.
Not suitable for the safety-related use on motorcycle helmets or equestrian helmets.

SNAP helmet buckle 20 durethan

F7021-000002(BLK)



Opening mechanism
slide laterally

Webbing width
20 mm

Weight
ca. 15 g

Dimensions (L×W×H)
46,8 × 27,5 × 13,1 mm

Material
PA6GFCF30, PA66GF15

Static breaking load
65 kg

Colour
black

Assembly
strap, ladderlock, single bar

Sector
helmets

- # Helmet buckle for 20 mm wide webbing
- # Static breaking load of up to 65 kg
- # Ladderlock on one side for strap adjustment

Note
Variant for thinner or single-layered straps available upon request.
Not suitable for the safety-related use on motorcycle helmets or equestrian helmets.

SNAP helmet buckle 15 grivory

F7024-000002(BLK)



Opening mechanism
slide laterally

Webbing width
15 mm

Weight
ca. 12 g

Dimensions (L×W×H)
46,4 × 29,8 × 13,9 mm

Material
PAGF40, ABS

Static breaking load
75 kg

Colour
black

Assembly
strap, ladderlock, single bar

Sector
helmets

- # Helmet buckle for 15 mm wide webbing
- # Static breaking load of up to 75 kg
- # Ladderlock on one side for strap adjustment

Note
Variant for thinner or single-layered straps available upon request.
Not suitable for the safety-related use on motorcycle helmets or equestrian helmets.

SNAP helmet buckle 20 grivory

F7026-000002(BLK)



Opening mechanism
slide laterally

Webbing width
20 mm

Weight
ca. 15 g

Dimensions (L×W×H)
46,8 × 27,5 × 13,1 mm

Material
PAGF40, ABS

Static breaking load
75 kg

Colour
black

Assembly
strap, ladderlock, single bar

Sector
helmets

- # Helmet buckle for 20 mm wide webbing
- # Static breaking load of up to 75 kg
- # Ladderlock on one side for strap adjustment

Note
Variant for thinner or single-layered straps available upon request.

Not suitable for the safety-related use on motorcycle helmets or equestrian helmets.

SNAP helmet buckle 15 shaped durethan

F7030-000002(BLK)



Opening mechanism
slide laterally

Webbing width
15 mm

Webbing thickness
1,6 mm

Weight
ca. 11 g

Dimensions (L×W×H)
46,3 × 28,0 × 13,2 mm

Material
PA6GFCF30, PP

Static breaking load
65 kg

Colour
black

Assembly
strap, ladderlock, single bar

Sector
helmets

- # Helmet buckle for thin or single-layered straps with a width of 15 mm
- # Static breaking load of up to 65 kg
- # Ladderlock on one side for strap adjustment

Note
For thinner or single-layered straps. Version for thick webbing available.

Not suitable for the safety-related use on motorcycle helmets or equestrian helmets.

SNAP helmet buckle 15 shaped grivory

F7031-000002(BLK)



Opening mechanism
slide laterally

Webbing width
15 mm

Webbing thickness
1,6 mm

Weight
ca. 12 g

Dimensions (L×W×H)
46,3 × 28,0 × 13,2 mm

Material
PAGF40, PP

Static breaking load
75 kg

Colour
black

Assembly
strap, ladderlock, single bar

Sector
helmets

- # Helmet buckle for thin or single-layered straps with a width of 15 mm
- # Static breaking load of up to 75 kg
- # Ladderlock on one side for strap adjustment

Note
For thinner or single-layered straps. Version for thick webbing available.

Not suitable for the safety-related use on motorcycle helmets or equestrian helmets.

SNAP helmet buckle 15 shaped broad durethan

F7032-000002(BLK)



Opening mechanism
slide laterally

Webbing width
15 mm

Webbing thickness (single layered; double layered)
2,5 mm; 1,3 mm

Weight
ca. 12 g

Dimensions (L×W×H)
46,8 × 28,0 × 13,4 mm

Material
PA6GFCF30, PP

Static breaking load
65 kg

Colour
black

Assembly
strap, ladderlock, single bar

Sector
helmets

- # Helmet buckle for 15 mm wide webbing
- # Up to 2,5 mm thick single-layered or 1,3 mm thick double-layered straps
- # Developed with nub on ladderlock for FIDLOCK anti-slip part (improved replacement for conventional O-rings - not included)

Note
Anti-slip part available (article no. 07037). Approved only with the original FIDLOCK anti-slip part. Safe operation is only guaranteed when the original FIDLOCK anti-slip part is used. Safety warning: use of conventional O-rings might lead to malfunction.

Variant for thinner or single-layered straps available upon request.

Not suitable for the safety-related use on motorcycle helmets or equestrian helmets.

SNAP helmet buckle 15 shaped broad grivory

F7033-000002(BLK)



Opening mechanism
slide laterally

Webbing width
15 mm

Webbing thickness (single layered; double layered)
2,5 mm; 1,3 mm

Weight
ca. 12 g

Dimensions (L×W×H)
46,8 × 28,0 × 13,4 mm

Material
PAGF40, PP

Static breaking load
75 kg

Colour
black

Assembly
strap, ladderlock, single bar

Sector
helmets

- # Helmet buckle for 15 mm wide webbing
- # Up to 2,5 mm thick single-layered or 1,3 mm thick double-layered straps
- # Developed with nub on ladderlock for FIDLOCK anti-slip part (improved replacement for conventional O-rings - not included)

Note
Anti-slip part available (article no. 07037). Approved only with the original FIDLOCK anti-slip part. Safe operation is only guaranteed when the original FIDLOCK anti-slip part is used. Safety warning: use of conventional O-rings might lead to malfunction.

Variant for thinner or single-layered straps available upon request.

Not suitable for the safety-related use on motorcycle helmets or equestrian helmets.

SNAP helmet buckle 15 shaped broad durethan with anti-slip part

F7035-000002(BLK)



Opening mechanism
slide laterally

Webbing width
15 mm

Webbing thickness (single layered; double layered)
2,5 mm; 1,3 mm

Weight
ca. 12 g

Dimensions (L×W×H)
46,8 × 28,0 × 13,4 mm (without slip lock)

Material
PA6GFCF30, silicone

Static breaking load
65 kg

Colour
black

Assembly
strap, ladderlock, single bar

Sector
helmets

- # Helmet buckle for 15 mm wide webbing
- # Up to 2,5 mm thick single-layered or 1,3 mm thick double-layered straps
- # FIDLOCK anti-slip part included
- # Static breaking load of up to 65 kg
- # Ladderlock on one side for strap adjustment

Note
Approved only with the original FIDLOCK anti-slip part. Safe operation is only guaranteed when the original FIDLOCK anti-slip part is used. Safety warning: use of conventional O-rings might lead to malfunction.

Not suitable for the safety-related use on motorcycle helmets or equestrian helmets.

SNAP helmet buckle 15 shaped broad grivory with anti-slip part

F7036-000002 (BLK)



Opening mechanism
slide laterally

Webbing width
15 mm

Webbing thickness (single layered; double layered)
2,5 mm; 1,3 mm

Weight
ca. 13 g

Dimensions (L×W×H)
46,8 × 28,0 × 13,4 mm (without slip lock)

Material
PAGF40, silicone

Static breaking load
75 kg

Colour
black

Assembly
strap, ladderlock, single bar

Sector
helmets

- # Helmet buckle for 15 mm wide webbing
- # Up to 2,5 mm thick single-layered or 1,3 mm thick double-layered straps
- # FIDLOCK anti-slip part included
- # Static breaking load of up to 75 kg
- # Ladderlock on one side for strap adjustment

Note

Approved only with the original FIDLOCK anti-slip part. Safe operation is only guaranteed when the original FIDLOCK anti-slip part is used. Safety warning: use of conventional O-rings might lead to malfunction.

Not suitable for the safety-related use on motorcycle helmets or equestrian helmets.

SNAP helmet buckle anti-slip part for 15 shaped broad

07037-000002 (BLK)



Webbing width
15 mm

Webbing thickness (single layered; double layered)
2,5 mm; 1,3 mm

Material
silicone

Colour
black

Assembly
strap, add-on part

Sector
helmets

- # Add-on component for SNAP helmet buckle 15 shaped broad (article no. F7032 & F7033)
- # Anti-slip part to secure webbing (replacing conventional O-rings)
- # Product only includes anti-slip part

Note

Safety warning: Using conventional O-rings for the SNAP helmet buckle shaped broad might lead to malfunction. Safe operation is only guaranteed when the original FIDLOCK anti-slip rubber part is used.

Not suitable for the safety-related use on motorcycle helmets or equestrian helmets.

SNAP helmet buckle 15 dynamic techline

F7045-000001 (BLK)



Opening mechanism
slide

Weight
11,2 g

Dimensions (L×W×H)
47,5 × 30,1 × 13,5 mm

Material
PA66GFCF, PA6, NdFeB, Epoxy

Colour
black

Assembly
strap

Sector
helmets

- # Coloured helmet buckles (first in market fully coloured)
- # New design – more sleek and modern
- # About 2g less compared to F7020
- # The colours 0000 (white) and 0185 (red) are also available in the standard range on request

Note

Variant for thinner or single-layered straps available upon request.

Not suitable for the safety-related use on motorcycle helmets or equestrian helmets.



Maximum security – even at high loads

The HOOK product family is designed for fastening applications subjected to particularly high loads, such as the HOOK 25 alu motorbike for motorcycle helmets. The conjunction of fibreglass reinforced materials with an aluminium hook (may vary) allows versions of the HOOK to withstand tensile forces of up to 200 kg, ensuring that the fastener will not disengage unintentionally – even under extreme loads. HOOK fasteners are also available for applications with lower tensile forces. Additionally, the product family includes slimmer versions for watches or bags, depending on the implementation of the fastener on the product. The HOOK family represents a unique patented product family and principle. To close the fastener, just move the male part (upper part) towards the female part (bottom part). Once in position, both elements attract each other and lock magnetically, securely engaging in the grooving. Opening the fastener is just as effortless – even with gloves: tilt it forwards or pull the strap e.g. on the HOOK 25 alu motorbike. The HOOK product family holds fasteners for webbing widths of 15 to 40 mm and ranges from significantly light and slim models to the HOOK 25 alu motorbike for motorcycle helmets and the HOOK 25 reverse that can be engaged on either side.

Patents: The base of our HOOK fasteners is functionality that uniquely combines strong, secure hold at high loads and ease of use for the customer. This allows us to create different innovative fasteners for diverse applications, such as our revolutionary motorbike helmet buckle (HOOK 25 alu motorbike). Therefore, the products of the HOOK family are protected by at least one of the following patents:

AU2013389284, CA2909680, CN105228480, JP6286534, KR102036206, RU2637895, US10212993, EP2825075 (DE, ES, FR, GB, IT), EP3039983 (DE, FR, GB), EP3157370 (DE, FR, GB), US10617179, EP3192388 (DE, FR, GB)

You can find detailed and updated information on fidlock.com/en/patents.

HOOK

HOOK 15 helmet buckle

01202-000042(BLK)



Opening mechanism
lift

Webbing width
15 mm

Weight
ca. 10 g

Dimensions (L×W×H)
32,2 × 23,0 × 11,9 mm (incl. D-ring)

Material
PA6, PAGF40, stainless steel

Static breaking load
50 kg

Colour
black

Assembly
strap, glide bar, single bar

Sector
helmets

- # Helmet buckle for 15 mm wide webbing
- # Compact and robust
- # Version with short D-ring and moving bar to enable adjustment of the strap

Note
Not suitable for the safety-related use on motorcycle helmets. Use for equestrian helmets only with additional securing sleeve (article no. 00107).

D-ring is available in different lengths (article no. 01215).

HOOK 15 helmet buckle long D-ring

01215-000022(BLK)



Opening mechanism
lift

Webbing width
15 mm

Weight
ca. 10 g

Dimensions (L×W×H)
51,7 × 21,6 × 11,9 mm (incl. D-ring)

Material
PA6, PAGF40, stainless steel

Static breaking load
50 kg

Colour
black

Assembly
strap, glide bar, single bar

Sector
helmets

- # Helmet buckle for 15 mm wide webbing
- # Compact and robust
- # Version with long D-ring and moving bar to enable adjustment of the strap

Note
Not suitable for the safety-related use on motorcycle helmets. Use for equestrian helmets only with additional securing sleeve (article no. 00107)..

D-ring is available in different lengths (article no. 01202).

HOOK 15 helmet buckle pull tab

01239-000062(BLK)



Opening mechanism
lift

Webbing width
15 mm

Weight
ca. 11 g

Dimensions (L×W×H)
46,7 × 23,1 × 11,8 mm (incl. D-ring)

Material
PA6, PAGF40, stainless steel

Static breaking load
50 kg

Colour
black

Assembly
strap, glide bar, single bar

Sector
helmets

- # Helmet buckle for 15 mm wide webbing
- # Compact and robust
- # Version with a pull tab to further facilitate opening
- # D-ring with a moving bar to enable adjustment of the strap

Note
Not suitable for the safety-related use on motorcycle helmets or equestrian helmets.

D-ring is available in different lengths upon request.

The pull tab is included in the scope of delivery.

HOOK 15 helmet buckle LL

F1665-000002(BLK)



Opening mechanism
lift
Webbing width
15 mm
Webbing thickness
1,2 mm (double-layered)
Weight
ca. 15 g
Dimensions (L×W×H)
55,9 × 24,2 × 12,6 mm
Material
PA66GFCF30, SUS304
Static breaking load
80 kg
Colour
black
Assembly
strap, single bar, ladderlock

Sector
helmets

- # Helmet buckle for 15 mm wide webbing
- # Pull tab to further facilitate opening
- # Version with ladderlock on one side to enable adjustment of the strap

Note
Not suitable for the safety-related use on motorcycle helmets or equestrian helmets.

HOOK 15 FW sewable

01266-000032(BLK)



Opening mechanism
lift
Webbing width
15 mm
Weight
ca. 10 g
Dimensions (L×W×H)
46,8 × 27,8 × 12,6 mm (incl. D-ring)
Material
PA6, stainless steel
Colour
black
Assembly
sewing, strap, welding, glide bar

Sector
footwear, apparel

- # Male part for 15 mm wide webbing
- # Female part can be sewn to materials
- # Pull tab further facilitates opening
- # D-ring with a moving bar to enable adjustment of the strap
- # Designed for footwear, but ideal for diverse applications

Note
Not suitable for safety-related applications.
The pull tab is included in the scope of delivery.

HOOK 20 helmet buckle

F1208-000162(BLK)



Opening mechanism
lift
Webbing width
20 mm
Weight
ca. 10 g
Dimensions (L×W×H)
44,0 × 29,0 × 14,0 mm
Material
PA6, PAGFCF30, stainless steel
Static breaking load
50 kg
Colour
black
Assembly
strap, ladderlock

Sector
helmets

- # Helmet buckle for 20 mm wide webbing
- # Ladderlock on one side for strap adjustment
- # Pull tab further facilitates opening

Note
Not suitable for the safety-related use on motorcycle helmets.
The red pull tab is included in the scope of delivery.

HOOK 25 alu motorbike

01259-000003(BLK)



Opening mechanism
lift
Webbing width
25 mm
Weight
ca. 21 g
Dimensions (L×W×H)
33,9 × 34,0 × 11,8 mm
Material
PA6, aluminium
Static breaking load
200 kg
Colour
black
Assembly
strap, single bar, glide bar

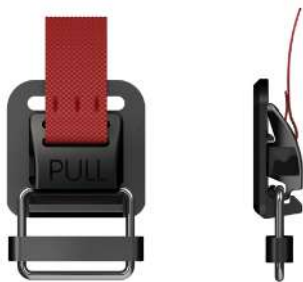
Sector
helmets

- # Helmet buckle for 25 mm wide webbing
- # Static breaking load of up to 198 kg
- # D-ring with a moving bar to enable adjustment of the strap
- # Suitable for motorcycle helmets (depending on the implementation of the fastener on the product)
- # Easy opening, even with gloves

Note
Suitable for the use on motorcycle helmets. Fulfils standards ECE-R22 and DOT (depending on the implementation of the fastener on the product).
The red pull tab is included in the scope of delivery.
Available with stainless steel glide bar upon request.

HOOK 25 plastic

01249-000002(BLK)



Opening mechanism
pull
Webbing width
25 mm
Weight
ca. 13 g
Dimensions (L×W×H)
49,2 × 34 × 11,8 mm (incl. D-ring)
Material
PA6, PA66GF15, stainless steel
Static breaking load
30 kg
Colour
black
Assembly
strap, glide bar, single bar

Sector
medical, transportation, outdoor, sports, professionals, bags, footwear

- # Same appearance and ease of use as HOOK 25 alu motorbike, but different material and lower price
- # Static breaking load of up to 30 kg
- # D-ring with a moving bar to enable adjustment of the strap
- # Suitable for standard applications, e.g. bags or footwear

Note
Not suitable for safety-related applications and not suitable for helmets.
The red pull tab is included in the scope of delivery.
Also available as a version with transparent material. [Click here](#) for further information.

HOOK 25 plastic open d-ring

01249-000072(BLK)



Opening mechanism
lift
Webbing width
25 mm
Weight
15,80 g
Dimensions (L×W×H)
49 × 34 × 12 mm (incl. D-ring)
Material
PA66GF, Epoxy, NdFeb, stainless steel
Colour
black
Assembly
single bar, glide bar, strap

Sector
transportation, outdoor, medical, apparel, bags, sports, footwear, professionals

- # Same appearance and ease of use as HOOK 25 alu motorbike, but different material and lower price
- # Static breaking load of up to 400N
- # D-ring with a moving bar to enable adjustment of the strap
- # Suitable for standard applications, e.g. bags or footwear

Note
Not suitable for safety-related applications and not suitable for helmets.
The red pull tab is included in the scope of delivery.

HOOK 25 plastic open d-ring RC

01249-000072(5415)R

New



Opening mechanism
lift

Webbing width
25 mm

Weight
16,00 g

Dimensions (L×W×H)
49 × 34 × 12 mm (incl. D-ring)

Material
PA6, PA6GF, epoxy, NdFeB, stainless steel, fabric

Colour
5415

Assembly
glide bar, strap, single bar

- # Made from recycled plastic
- # Same appearance and ease of use as HOOK 25 alu motorbike, but different material and lower price
- # D-ring with a moving bar to enable adjustment of the strap
- # Suitable for standard applications, e.g. bags or footwear

Note

Not suitable for safety-related applications.

The black pull tab is included in the scope of delivery.

Due to the recycled material dark spots may appear.



HOOK 25 plastic open d-ring RC

01249-000072(BLK)R

New



Opening mechanism
lift

Webbing width
25 mm

Weight
16,00 g

Dimensions (L×W×H)
49 × 34 × 12 mm (incl. D-ring)

Material
PA6, PA6GF, epoxy, NdFeB, stainless steel, fabric

Colour
black

Assembly
strap, single bar, glide bar

- # Made from recycled plastic
- # Same appearance and ease of use as HOOK 25 alu motorbike, but different material and lower price
- # D-ring with a moving bar to enable adjustment of the strap
- # Suitable for standard applications, e.g. bags or footwear

Note

Not suitable for safety-related applications.

The red pull tab is included in the scope of delivery.



HOOK 20 sternum strap

01256-000002(BLK)



Opening mechanism
lift

Webbing width
20 mm

Weight
ca. 17 g

Dimensions (L×W×H)
56,9 × 33,2 × 15,5 mm (incl. D-ring)

Material
PA6, PA66GF15, stainless steel

Static breaking load
depending on application

Colour
black

Assembly
strap, piping, single bar, glide bar

Sector

medical, transportation, outdoor, sports, professionals, bags

- # Attached to 20 mm wide webbing and piping
- # D-ring with a moving bar to enable adjustment of the strap
- # Developed for chest straps

Note

Not suitable for safety-related applications.

The red pull tab is included in the scope of delivery.

HOOK 25 rivet

01260-000012(BLK)



Opening mechanism
lift
Webbing width
25 mm
Weight
ca. 17 g
Dimensions (L×W×H)
40,2 × 46,9 × 11,8 mm (incl. D-ring)
Material
PA6, PA66GF15, stainless steel
Static breaking load
50 kg
Colour
black
Assembly
strap, rivets (not included), glide bar

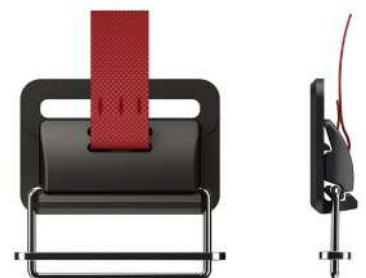
Sector
transportation, medical, outdoor, sports, professionals, bags, children

- # Attached to 25 mm wide webbing and with rivets (rivets not included)
- # D-ring with a moving bar to enable adjustment of the strap
- # Ideal for diverse applications, e.g. securing tarps or as a bag fastener

Note
Not suitable for safety-related applications.
The red pull tab is included in the scope of delivery.
Rivets are not included in the scope of delivery.

HOOK 40 alu

01218-000002(ALB)



Opening mechanism
lift
Webbing width
40 mm
Weight
ca. 32 g
Dimensions (L×W×H)
33,9 × 50,0 × 11,8 mm
Material
PA6, aluminium, stainless steel
Static breaking load
100 kg (with glide bar); 200 kg (without glide bar)
Colour
aluminium/black
Assembly
strap, glide bar, single bar

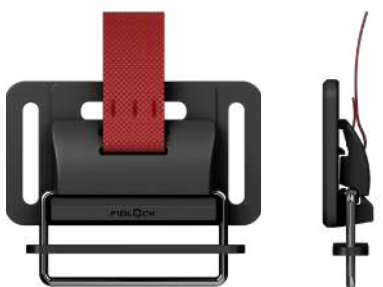
Sector
medical, transportation, outdoor, professionals, sports, bags

- # Fastener for high loads and 40 mm wide webbing
- # D-ring with a moving bar to enable adjustment of the strap
- # Ideal for diverse applications, e.g. bags with wide straps or belts

Note
Not suitable for safety-related applications.
The red pull tab is included in the scope of delivery.

HOOK 40 adjuster ortho

01219-000002(BLK)



Opening mechanism
lift
Webbing width
40 mm
Weight
ca. 28 g
Dimensions (L×W×H)
35,5 × 63,3 × 12,1 mm
Material
PA6, PA66GF15, stainless steel
Static breaking load
50 kg
Colour
black
Assembly
strap, glide bar, tri-glide, single bar

Sector
professionals, medical, transportation, outdoor, sports, bags

- # D-ring for and 3 additional slots for webbing (width: 1 x 40 mm, 3 x 25 mm)
- # Depending on fitting, it can remain moveable on a strap
- # D-ring with a moving bar to enable adjustment of the strap
- # Ideal for bags or products with many straps

Note
Not suitable for safety-related applications.
The red pull tab is included in the scope of delivery.

HOOK 40 adjuster

01251-000202 (BLK)



Opening mechanism
lift
Webbing width
40 mm
Weight
ca. 35 g
Dimensions (L×W×H)
49,1 × 53,9 × 18,0 mm
Material
PA66GF15, stainless steel
Static breaking load
40 kg
Assembly
strap, glide bar, tri-glide, single bar

Sector
medical, transportation, sports, bags, professionals, outdoor

- # Can be threaded onto the webbing to remain moveable after fitting
- # Additional D-ring with a moving bar to enable adjustment of the strap
- # Ideal for diverse bags, e.g. to adjust straps to the filling volume with only one hand

Note
Not suitable for safety-related applications.
The red pull tab is included in the scope of delivery.
The modular injection moulding tool allows the fastening geometry to be individually adjusted.

HOOK 40 tough

01258-000011 (BLK)



Opening mechanism
lift
Webbing width
40 mm
Weight
ca. 40 g
Dimensions (L×W×H)
48,0 × 58,2 × 17,3 mm
Material
PA66GF15, stainless steel, aluminium
Static breaking load
100 kg (with glide bar); 200 kg (without glide bar)
Colour
black
Assembly
strap, glide bar, single bar

Sector
bags, outdoor, professionals, sports, transportation

- # Static breaking load of up to 100kg with glide bar and 200 kg without glide bar
- # D-ring with a moving bar to enable adjustment of the strap
- # Ideal for applications areas requiring hard-wearing buckles, e.g. backpacking, outdoor, work

Note
Not suitable for safety-related applications.
The red pull tab is included in the scope of delivery.

HOOK 25 belt LL

01238-000002 (BLK)



Opening mechanism
lift
Webbing width
25 mm
Weight
ca. 20 g
Dimensions (L×W×H)
48,4 × 41,4 × 18,2 mm
Material
PA66GF15, PA66GF30
Static breaking load
40 kg
Colour
black
Assembly
clip together, strap, ladderlock, single bar

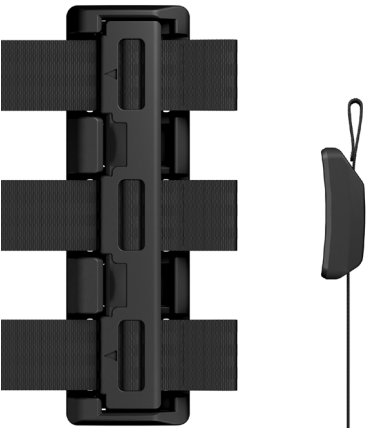
Sector
medical, transportation, professionals, outdoor, bags, sports

- # Domed shape to prevent accidental opening
- # Ladderlock version for 25 mm wide webbing
- # Single-handed adjustment of the strap
- # Ideal for the use on bags, e.g. fold bags, top-loader backpacks, luggage

Note
Not suitable for safety-related applications.

HOOK belt 25x3

01216-000002 (BLK)



Opening mechanism
lift
Weight
ca. 58 g
Dimensions (L×W×H)
149,9 × 43,9 × 14,6 mm
Material
PA6, PA66GF30
Static breaking load
300 kg
Colour
black
Assembly
clip together, strap, single bar

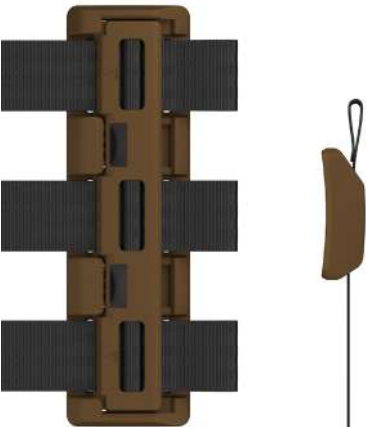
Sector
medical, transportation, outdoor, sports, professionals, bags

- # Three fasteners combined into a long one
- # Attachment of three straps
- # Version in the colour black (BLK)
- # Ideal for diverse applications, e.g. as lifejacket fasteners, tarpaulin connections, bag attachments

Note
Not suitable for safety-related applications.
Available in the standard colours black (BLK), disruptive grey (DGY), dark earth (DEA) and military olive (MOL).

HOOK belt 25x3

01216-000002 (DEA)



Opening mechanism
lift
Weight
ca. 58 g
Dimensions (L×W×H)
149,9 × 43,9 × 14,6 mm
Material
PA6, PA66GF30
Static breaking load
300 kg
Colour
dark earth
Assembly
clip together, strap, single bar

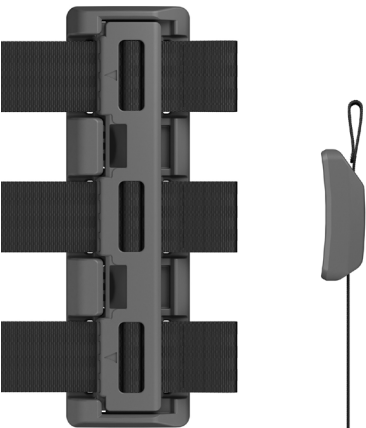
Sector
medical, transportation, outdoor, sports, professionals, bags

- # Three fasteners combined into a long one
- # Attachment of three straps
- # Version in the colour dark earth (DEA)
- # Ideal for diverse applications, e.g. as lifejacket fasteners, tarpaulin connections, bag attachments

Note
Not suitable for safety-related applications.
Available in the standard colours black (BLK), disruptive grey (DGY), dark earth (DEA) and military olive (MOL).

HOOK belt 25x3

01216-000002 (DGY)



Opening mechanism
lift
Weight
ca. 58 g
Dimensions (L×W×H)
149,9 × 43,9 × 14,6 mm
Material
PA6, PA66GF30
Static breaking load
300 kg
Colour
disruptive grey
Assembly
clip together, strap, single bar

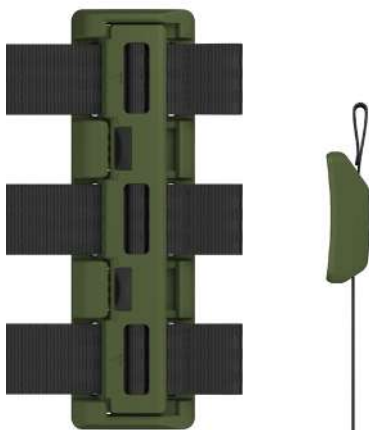
Sector
medical, transportation, outdoor, sports, professionals, bags

- # Three fasteners combined into a long one
- # Attachment of three straps
- # Version in the colour disruptive grey (DGY)
- # Ideal for diverse applications, e.g. as lifejacket fasteners, tarpaulin connections, bag attachments

Note
Not suitable for safety-related applications.
Available in the standard colours black (BLK), disruptive grey (DGY), dark earth (DEA) and military olive (MOL).

HOOK belt 25x3

01216-000002(MOL)



Opening mechanism
lift
Weight
ca. 58 g
Dimensions (L×W×H)
149,9 × 43,9 × 14,6 mm
Material
PA6, PA66GF30
Static breaking load
300 kg
Colour
military olive
Assembly
clip together, strap, single bar

Sector
medical, transportation, outdoor, sports, professionals, bags

- # Three fasteners combined into a long one
- # Attachment of three straps
- # Version in the military olive (MOL)
- # Ideal for diverse applications, e.g. as lifejacket fasteners, tarpaulin connections, bag attachments

Note
Not suitable for safety-related applications.
Available in the standard colours black (BLK), disruptive grey (DGY), dark earth (DEA) and military olive (MOL).

HOOK 40 belt

01235-000002(BLK)



Opening mechanism
lift
Webbing width
40 mm
Weight
ca. 36 g
Dimensions (L×W×H)
50,9 × 60,2 × 18,2 mm
Material
PA6, PA66GF30
Static breaking load
150 kg
Colour
black
Assembly
clip together, strap, single bar, tri-glide

Sector
medical, transportation, outdoor, sports, professionals, bags

- # Domed shape to prevent accidental opening
- # Suitable for heavy loads
- # Ideal for the use on bags, e.g. fold bags, top-loader backpacks, luggage

Note
Not suitable for safety-related applications.
The strap is threaded onto the male part and sewn in. The male part is designed for sewing securely and has no adjustable ladderlock geometry.

HOOK 40 belt LL

01237-000002(BLK)



Opening mechanism
lift
Webbing width
40 mm
Weight
ca. 34 g
Dimensions (L×W×H)
51,0 × 60,2 × 20,3 mm
Material
PA6, PA66GF30
Static breaking load
60 kg
Colour
black
Assembly
clip together, strap, single bar, ladderlock, tri-glide

Sector
medical, transportation, professionals, outdoor, sports, bags

- # Domed shape to prevent accidental opening
- # Ladderlock version for 40 mm wide webbing
- # Single-handed adjustment of the strap
- # Ideal for the use on bags, e.g. fold bags, top-loader backpacks, luggage

Note
Not suitable for safety-related applications.

HOOK 25 reverse

F1200-000002(BLK)



Opening mechanism
lift
Webbing width
25 mm
Weight
ca. 14 g
Dimensions (L×W×H)
44,5 × 33,9 × 12,4 mm
Material
PA66GF15
Static breaking load
40 kg
Colour
black
Assembly
strap, glide bar, single bar

Sector
professionals, medical, transportation, outdoor, sports, bags

- # Easy closure, even with twisted strap
- # Closing possible with front and reverse side of the male part
- # D-ring with a moving bar to enable adjustment of the strap
- # Ideal for diverse applications, e.g. bags

Note
Not suitable for safety-related applications.

HOOK 25 reverse LL

01290-000002(BLK)



Opening mechanism
lift
Webbing width
25 mm
Weight
ca. 15 g
Material
PA66GF15
Static breaking load
40 kg
Colour
black
Assembly
strap, glide bar, ladderlock

Sector
medical, transportation, outdoor, sports, professionals, bags

- # Easy closure, even with twisted strap
- # Closing possible with front and reverse side of the male part
- # D-ring with a moving bar and ladderlock enable adjustment of both straps
- # Ideal for diverse applications, e.g. bags

Note
Not suitable for safety-related applications.

HOOK 20 flat

F1211-000002(BLK)



Opening mechanism
lift
Webbing width
20 mm
Weight
ca. 7 g
Dimensions (L×W×H)
43,1 × 26,8 × 8,9 mm
Material
PA66GF15
Static breaking load
15 kg
Colour
black
Assembly
strap, single bar

Sector
medical, transportation, outdoor, sports, professionals, apparel

- # Buckle with particularly flat design
- # Version for straps
- # Ideal for applications requiring small, slim fasteners, e.g. sports watches, apparel and other textile products

Note
Not suitable for safety-related applications.

HOOK 20 flat sewable

F1229-000002 (BLK)



Opening mechanism
lift
Webbing width
20 mm
Weight
ca. 7 g
Dimensions (L×W×H)
45,6 × 26,8 × 7,8 mm
Material
PA66GF15
Static breaking load
15 kg
Colour
black
Assembly
sewing, strap, welding, single bar

Sector
medical, apparel, transportation, outdoor, professionals, sports

- # Buckle with particularly flat design
- # Version for strap and sewing onto materials
- # Ideal for applications requiring small, slim fasteners, e.g. apparel and other textile products

Note
Not suitable for safety-related applications.

HOOK 20 flat adjuster

F1228-000002 (BLK)



Opening mechanism
lift
Webbing width
20 mm
Weight
ca. 8 g
Dimensions (L×W×H)
43,5 × 26,8 × 10,4 mm
Material
PA66GF15
Static breaking load
15 kg
Colour
black
Assembly
strap, single bar, tri-glide

Sector
apparel, medical, professionals, transportation, outdoor, sports

- # Buckle with particularly flat design
- # Version for straps
- # Can be threaded onto the webbing to remain moveable after fitting
- # Ideal for applications requiring small, slim fasteners, e.g. apparel and other textile products

Note
Not suitable for safety-related applications.

HOOK 20 rope

F1204-000022 (BLK)



Opening mechanism
lift
Webbing width
20 mm
Weight
ca. 6 g
Dimensions (L×W×H)
31,5 × 26,8 × 8,5 mm
Rope diameter
3,0 mm
Material
PA66GF15
Static breaking load
3 kg
Colour
black
Assembly
strap, clip together, rope, single bar

Sector
medical, professionals, footwear, apparel, transportation, outdoor, sports

- # Buckle with particularly flat design
- # Version for a strap and elastic cord
- # Cord is adjustable
- # Ideal for e.g. backpacks, shoes, sportswear

Note
Not suitable for safety-related applications.
The elastic cord is inhibited depending on cord diameter. The cord is not included in the scope of delivery.

HOOK 20 rope sewable
F1226-000002 (BLK)



Opening mechanism
lift
Weight
ca. 6 g
Dimensions (L×W×H)
32,4 × 26,8 × 8,3 mm
Rope diameter
2,5-3,0 mm
Material
PA66GF15
Static breaking load
3 kg
Colour
black
Assembly
clip together, sewing, welding, rope

Sector
medical, transportation, outdoor, footwear, sports, professionals, apparel

- # Buckle with particularly flat design
- # Version for cord and sewing onto materials
- # Sewing strip on one side
- # Cord is adjustable
- # Ideal for applications requiring small, slim fasteners, e.g. footwear and textile products

Note
Not suitable for safety-related applications.

The elastic cord is inhibited depending on cord diameter. The cord is not included in the scope of delivery.

HOOK 20 rope sewable RC
01226-000002 (5415)R



Opening mechanism
lift
Weight
6,00 g
Dimensions (L×W×H)
32,4 × 26,8 × 8,3 mm
Rope diameter
2,0-3,5 mm
Material
PA6, PA6 GF, NdFeB, epoxy
Colour
5415
Assembly
sewing, welding, rope

Sector
apparel, bags, footwear, outdoor, medical, sports

- # Made from recycled plastic
- # Buckle with particularly flat design
- # Version for cord and sewing onto materials
- # Sewing strip on one side
- # Cord is adjustable
- # Ideal for applications requiring small, slim fasteners, e.g. footwear and textile products

Note
Not suitable for safety-related applications.

Due to the recycled material dark spots may appear.



HOOK 20 rope sewable RC
01226-000002 (BLK)R



Opening mechanism
lift
Weight
6,00 g
Dimensions (L×W×H)
32,4 × 26,8 × 8,3 mm
Rope diameter
2,5-3,0 mm
Material
PA6, PA6 GF, NdFeB, epoxy
Colour
black
Assembly
clip together, sewing, welding, rope

Sector
apparel, bags, footwear, outdoor, medical, sports

- # Made from recycled plastic
- # Buckle with particularly flat design
- # Version for cord and sewing onto materials
- # Sewing strip on one side
- # Cord is adjustable
- # Ideal for applications requiring small, slim fasteners, e.g. footwear and textile products

Note
Not suitable for safety-related applications.



HOOK 20 rope sewable X3
F1241-300002(BLK)



Opening mechanism
lift
Weight
ca. 7 g
Dimensions (L×W×H)
32,4 × 42,8 × 8,6 mm
Rope diameter
3,0 mm
Material
PA66GF15
Static breaking load
3 kg
Colour
black
Assembly
clip together, sewing, welding, rope

Sector
medical, transportation, outdoor, sports, footwear, professionals, apparel

- # Buckle with particularly flat design
- # Version for cord and sewing onto materials
- # Sewing strip on three sides
- # Cord is adjustable
- # Ideal for applications requiring small, slim fasteners, e.g. footwear and textile products

Note
Not suitable for safety-related applications.

The elastic cord is inhibited depending on cord diameter. The cord is not included in the scope of delivery.

HOOK 20 rope adjuster
F1227-000002(BLK)



Opening mechanism
lift
Webbing width
20 mm
Weight
ca. 7 g
Dimensions (L×W×H)
37,3 × 26,8 × 8,5 mm
Rope diameter
3,0 mm
Material
PA66GF15
Static breaking load
3 kg
Colour
black
Assembly
clip together, strap, rope, tri-glide

Sector
medical, transportation, outdoor, sports, professionals, apparel, footwear

- # Buckle with particularly flat design
- # Version for a strap and elastic cord
- # Can be threaded onto the webbing to remain moveable after fitting
- # Cord is adjustable
- # Ideal for e.g. backpacks, shoes, sportswear

Note
Not suitable for safety-related applications.

The elastic cord is inhibited depending on cord diameter. The cord is not included in the scope of delivery.

HOOK 20 tanka sewable X3
F1650-000002(BLK)



Opening mechanism
lift
Weight
ca. 8 g
Dimensions (L×W×H)
32,4 × 42,8 × 12,2 mm
Rope diameter
2,0-3,5 mm
Material
PA66GF15, PA6
Static breaking load
20 kg
Colour
black
Assembly
clip together, sewing, welding, rope

Sector
footwear, apparel, professionals

- # Buckle with particularly flat design
- # Version for cord and sewing onto materials
- # Sewing strip on three sides
- # Cord is adjustable by pushing the button
- # Ideal for applications requiring small, slim fasteners, e.g. footwear and textile products

Note
Not suitable for safety-related applications.

The cord can be inhibited and then released through the small push button (cord stopper). The cord is not included in the scope of delivery.

This fastener features a FIDLOCK logo.

HOOK *toggle latch*
01291-000001 (BLK)



Opening mechanism
lift

Webbing width
25 mm

Weight
ca. 23 g

Dimensions (L×W×H)
106,6 × 37,4 × 14,6 mm

Material
PA6, POM, stainless steel

Static breaking load
45 kg

Colour
black

Assembly
strap, rivets (not included), single bar

Sector
medical, transportation, outdoor, sports,
professionals, bags, footwear

Developed for orthopaedic applications

Easy attaching and adjusting, e.g. of prosthesis

Note
Not suitable for safety-related applications.



Self-securing: the higher the load, the safer the buckle

The V-BUCKLE product family was designed as a closure system for high forces, requiring added security, e.g. baby carriers. Created with a unique design, it is self-securing: the more load the fastener holds, the harder it is to open it. On top of that, the unique design stands out with a modern appearance. Therefore, the product family also includes slim or sewable versions for applications with lower tensile forces, such as footwear or apparel. Additionally, the design allows the V-BUCKLE male and female parts to be combined freely, meaning, for example, combinations of the female component for 25 mm wide straps with the V-BUCKLE male 40 are possible. The fastener is opened by simply tilting the flap, facilitated by a pull tab. Due to the attractive force, the magnetic fastener components link automatically and securely lock when brought into position. Regarding customization of the V-BUCKLE, the stainless-steel flap is available in four different finishes and can feature a logo upon request. The buckles in this section are suitable for safety-related applications, rewarding users with peace of mind and a fastener tailored to suit their personal needs and wishes. The use on dog collars is only permitted after intensive testing by the customer. Using the V-BUCKLE on dog leashes is excluded.

Patents: The V-BUCKLE products have a truly unique combination of features: self-securing functionality, modular design and a high-quality, modern appearance. We are proud of this innovative magnetic buckle, based on our one-of-a-kind FIDLOCK concept. Therefore, the V-BUCKLE products are protected by at least one of the following patents:

CN104853636, EP2833754 (AT, DE, ES, FR, GB, IT), JP6381543, US10143270

You can find detailed and updated information on fidlock.com/en/patents.

Mix & Match - create your own V-BUCKLE

The innovative design of this product family allows all V-BUCKLE male parts to fit all V-BUCKLE female counterparts. Therefore, you can freely mix and match the components to your liking, creating new possibilities, such as the connection to two different strap widths or combinations of fitting options and adjustability.

We have composed a video depicting a variety of possible combinations to assist you in finding the ideal V-BUCKLE solution for your product! **Watch the video here!**

V-BUCKLE 20 + pull tab

FL-FV-14210



Opening mechanism
lift
Webbing width
20 mm
Weight
ca. 23 g
Dimensions (L×W×H)
74,0 × 34,2 × 13,5 mm
Material
PA66GF30, stainless steel
Static breaking load
70 kg
Colour
black/stainless steel
Assembly
strap, single bar, ladderlock

Sector
medical, bags, sports, outdoor, transportation,
apparel, children, footwear, professionals

- # Slim version for 20 mm wide straps
- # Ideal for diverse application areas, e.g. bags, fashion, footwear

Note
Also available as a version with transparent material.
Click here for further information.

Not suitable for safety-related applications.

Available with or without pull tab, hole dimensions: 4 x 2 mm.

All V-BUCKLE female parts are compatible with all V-BUCKLE male parts. This does not include size S V-BUCKLES, identified by the additional „S“ in the product name.

V-BUCKLE 20 black flap + pull tab

FL-FV-14410



Opening mechanism
lift
Webbing width
20 mm
Weight
ca. 23 g
Dimensions (L×W×H)
74,0 × 34,2 × 13,5 mm
Material
PA66GF30, stainless steel
Static breaking load
70 kg
Colour
black
Assembly
strap, ladderlock, single bar

Sector
medical, bags, sports, outdoor, transportation,
apparel, children, footwear, professionals

- # Slim version for 20 mm wide straps
- # Black stainless steel flap
- # Diverse application areas, e.g. bags, fashion, footwear

Note
Not suitable for safety-related applications.

Available with or without pull tab, hole dimensions: 4 x 2 mm.

All V-BUCKLE female parts are compatible with all V-BUCKLE female parts. This does not include size S V-BUCKLES, identified by the additional „S“ in the product name.

V-BUCKLE 20 black flap + pull tab glow in the dark

FL-FV-14410(GITD)



Opening mechanism
lift
Webbing width
20 mm
Weight
21,00 g
Dimensions (L×W×H)
74,1 × 32,2 × 13,3 mm
Material
PA 12 + GID additive, stainless steel, nylon fabric, TPU, epoxy
Colour
glow in the dark
Assembly
strap, ladderlock, single bar

Sector
bags, footwear, medical, outdoor, professionals,
sports, children, transportation, apparel

- # Slim version for 20 mm wide straps
- # Black stainless steel flap
- # Glow in the dark material
- # Diverse application areas, e.g. bags, fashion, footwear

Note
Can be used for applications with specific safety requirements.

Not for use on dog leashes. Use for fastening dog collars only after successful suitability testing by the manufacturer.

Available with or without pull tab, hole dimensions: 4 x 2 mm.

All V-BUCKLE female parts are compatible with all V-BUCKLE male parts. This does not include size S V-BUCKLES, identified by the additional „S“ in the product name.

V-BUCKLE 25 + pull tab

FL-FV-11201



Opening mechanism
lift
Webbing width
25 mm
Weight
ca. 25 g
Dimensions (L×W×H)
72,0 × 34,0 × 14,0 mm
Material
PA66GF30, stainless steel
Static breaking load
70 kg
Colour
black/stainless steel
Assembly
strap, single bar, ladderlock

Sector

bags, footwear, apparel, sports, outdoor, professionals, transportation, medical, children

- # Self-securing: the higher the load, the more force is required to open the buckle
- # Version for 25 mm straps
- # Ideal for diverse application areas, e.g. carrying systems, outdoor gear, fashion

Note

Can be used for applications with specific safety requirements.

Not for use on dog leashes. Use for fastening dog collars only after successful suitability testing by the manufacturer.

Available with or without pull tab, hole dimensions: 4 x 2 mm.

All V-BUCKLE female parts are compatible with all V-BUCKLE male parts. This does not include size S V-BUCKLES, identified by the additional „S“ in the product name.

V-BUCKLE 25 black flap + pull tab

FL-FV-11401



Opening mechanism
lift
Webbing width
25 mm
Weight
ca. 25 g
Dimensions (L×W×H)
72,0 × 34,0 × 14,0 mm
Material
PA66GF30, stainless steel
Static breaking load
70 kg
Colour
black
Assembly
strap, ladderlock, single bar

Sector

professionals, footwear, children, apparel, transportation, outdoor, sports, bags, medical

- # Self-securing: the higher the load, the more force is required to open the buckle
- # Version for 25 mm wide straps
- # Black stainless steel flap
- # Ideal for diverse application areas, e.g. carrying systems, outdoor gear, fashion

Note

Can be used for applications with specific safety requirements.

Not for use on dog leashes. Use for fastening dog collars only after successful suitability testing by the manufacturer.

Available with or without pull tab, hole dimensions: 4 x 2 mm.

All V-BUCKLE female parts are compatible with all V-BUCKLE male parts. This does not include size S V-BUCKLES, identified by the additional „S“ in the product name.

V-BUCKLE 25 SB/LL + pull tab

FL-FV-15213



Opening mechanism
lift
Webbing width
25 mm
Weight
ca. 24 g
Dimensions (L×W×H)
72,2 × 34,2 × 11,6 mm
Material
PA66GF, stainless steel
Static breaking load
70 kg
Colour
black/stainless steel
Assembly
single bar, ladderlock, strap

Sector

apparel, bags, children, footwear, medical, outdoor, professionals, sports, transportation

- # Self-securing: the higher the load, the more force is required to open the buckle
- # Version for 25 mm straps – ladderlock on female and single bar on male part
- # Ideal for diverse application areas, e.g. carrying systems, outdoor gear, fashion

Note

Can be used for applications with specific safety requirements.

Not for use on dog leashes. Use for fastening dog collars only after successful suitability testing by the manufacturer.

Available with or without pull tab, hole dimensions: 4 x 2 mm.

All V-BUCKLE female parts are compatible with all V-BUCKLE male parts. This does not include size S V-BUCKLES, identified by the additional „S“ in the product name.

V-BUCKLE 25 SB black flap + pull tab

FL-FV-15401

New



Opening mechanism
lift
Webbing width
25 mm
Weight
ca. 23 g
Dimensions (L×W×H)
66,7 × 34,2 × 11,6 mm
Material
PA66GF, stainless steel
Static breaking load
70 kg
Colour
black
Assembly
strap, single bar

Sector

transportation, sports, professionals, outdoor, medical, footwear, children, bags, apparel

- # Self-securing: the higher the load, the more force is required to open the buckle
- # Single bar black flap version for 25 mm webbing (fixed attachment on both sides - not adjustable)
- # Ideal for diverse application areas, e.g. carrying systems, outdoor gear, fashion

Note

Can be used for applications with specific safety requirements.

Not for use on dog leashes. Use for fastening dog collars only after successful suitability testing by the manufacturer.

Available with or without pull tab, hole dimensions: 4 x 2 mm.

All V-BUCKLE female parts are compatible with all V-BUCKLE male parts. This does not include size S V-BUCKLES, identified by the additional „S“ in the product name.

V-BUCKLE 25 sandblasted flap + pull tab RC

FL-FV-11601R

New



Opening mechanism
lift
Webbing width
25 mm
Weight
ca. 24 g
Dimensions (L×W×H)
74,0 × 34,2 × 13,5 mm
Material
PA&GF, stainless steel, NdFeB, epoxy, nylon fabric, TPU
Colour
5415
Assembly
single bar, strap, ladderlock



Sector

apparel, bags, footwear, outdoor

- # Made from recycled plastic
- # Self-securing: the higher the load, the more force is required to open the buckle
- # Version for 25 mm straps
- # Ideal for diverse application areas, e.g. fashion, shoes, bags

Note

Not for use on dog leashes. Use for fastening dog collars only after successful suitability testing by the manufacturer.

Available with or without pull tab, hole dimensions: 4 x 2 mm.

All V-BUCKLE female parts are compatible with all V-BUCKLE male parts. This does not include size S V-BUCKLES, identified by the additional „S“ in the product name.

Cannot be used in applications with specific safety requirements due to the recycled material.

Due to the recycled material dark spots may appear.

V-BUCKLE 25 black flap + pull tab RC

FL-FV-11401R

New



Opening mechanism
lift
Webbing width
25 mm
Weight
ca. 24 g
Dimensions (L×W×H)
74,0 × 34,2 × 13,5 mm
Material
PA&GF, stainless steel, NdFeB, epoxy, nylon fabric, TPU
Colour
black
Assembly
single bar, strap, ladderlock



Sector

apparel, bags, footwear, outdoor

- # Made from recycled plastic
- # Self-securing: the higher the load, the more force is required to open the buckle
- # Version for 25 mm straps
- # Ideal for diverse application areas, e.g. fashion, shoes, bags

Note

Not for use on dog leashes. Use for fastening dog collars only after successful suitability testing by the manufacturer.

Available with or without pull tab, hole dimensions: 4 x 2 mm.

All V-BUCKLE female parts are compatible with all V-BUCKLE male parts. This does not include size S V-BUCKLES, identified by the additional „S“ in the product name.

Cannot be used in applications with specific safety requirements due to the recycled material.

V-BUCKLE 25 LL black flap + pull tab

FL-FV-11413



Opening mechanism
lift
Webbing width
25 mm
Weight
ca. 26 g
Dimensions (L×W×H)
79,6 × 34,2 × 11,6 mm
Material
PA66GF, stainless steel
Static breaking load
70 kg
Colour
black
Assembly
ladderlock, strap

Sector

bags, apparel, sports, outdoor, professionals, transportation, footwear, medical, children

- # Self-securing: the higher the load, the more force is required to open the buckle
- # Ladderlock version with black flap for 25 mm wide webbing (adjustable on both sides)
- # Ideal for diverse application areas, e.g. carrying systems, outdoor gear, fashion

Note

Can be used for applications with specific safety requirements.

Not for use on dog leashes. Use for fastening dog collars only after successful suitability testing by the manufacturer.

Available with or without pull tab, hole dimensions: 4 x 2 mm.

All V-BUCKLE female parts are compatible with all V-BUCKLE male parts. This does not include size S V-BUCKLES, identified by the additional „S“ in the product name.

V-BUCKLE 25 split bar + pull tab

FL-FV-11202



Opening mechanism
lift
Webbing width
25 mm
Weight
ca. 25 g
Dimensions (L×W×H)
72,0 × 34,0 × 14,0 mm
Material
PA66GF30, stainless steel
Static breaking load
depending on application
Colour
black/stainless steel
Assembly
strap, ladderlock, hooked in

Sector

bags, footwear, apparel, sports, outdoor, professionals, transportation, medical, children

- # Easily retrofittable due to split bar
- # Version for 25 mm wide straps
- # Ideal for diverse application areas, e.g. bags, apparel

Note

Not suitable for safety-related applications.

Available with or without pull tab, hole dimensions: 4 x 2 mm.

All V-BUCKLE female parts are compatible with all V-BUCKLE male parts. This does not include size S V-BUCKLES, identified by the additional „S“ in the product name.

V-BUCKLE 25 split bar black flap + pull tab

FL-FV-11402



Opening mechanism
lift
Webbing width
25 mm
Weight
ca. 25 g
Dimensions (L×W×H)
72,0 × 34,0 × 14,0 mm
Material
PA66GF30, stainless steel
Static breaking load
depending on application
Colour
black
Assembly
strap, hooked in, ladderlock

Sector

medical, bags, sports, outdoor, transportation, apparel, children, footwear, professionals

- # Easily retrofittable due to split bar
- # Version for 25 mm wide straps
- # Black stainless steel flap
- # Ideal for diverse application areas, e.g. bags, apparel

Note

Not suitable for safety-related applications.

Available with or without pull tab, hole dimensions: 4 x 2 mm.

All V-BUCKLE female parts are compatible with all V-BUCKLE male parts. This does not include size S V-BUCKLES, identified by the additional „S“ in the product name.

V-BUCKLE 25 swivel mount + pull tab

FL-FV-11209



Opening mechanism
lift
Webbing width
25 mm
Weight
ca. 27 g
Dimensions (L×W×H)
72,8 × 34,2 × 16,0 mm
Material
PA66GF30, stainless steel
Static breaking load
70 kg
Colour
black/stainless steel
Assembly
strap, screwing, ladderlock

Sector
professionals, footwear, children, apparel, transportation, outdoor, sports, bags, medical

- # Self-securing: the higher the load, the more force is required to open the buckle
- # Attached with a screw and to a 25 mm wide strap
- # Ideal for diverse application areas, e.g. carrying systems, outdoor gear, fashion

Note
Can be used for applications with specific safety requirements.
Not for use on dog leashes. Use for fastening dog collars only after successful suitability testing by the manufacturer.

Available with or without pull tab, hole dimensions: 4 x 2 mm.

All V-BUCKLE female parts are compatible with all V-BUCKLE male parts. This does not include size S V-BUCKLES, identified by the additional „S“ in the product name.

V-BUCKLE 25 swivel mount black flap + pull tab

FL-FV-11409



Opening mechanism
lift
Webbing width
25 mm
Weight
ca. 27 g
Dimensions (L×W×H)
72,8 × 34,2 × 16,0 mm
Material
PA66GF30, stainless steel
Static breaking load
70 kg
Colour
black
Assembly
strap, screwing, ladderlock

Sector
medical, bags, sports, outdoor, transportation, apparel, children, footwear, professionals

- # Self-securing: the higher the load, the more force is required to open the buckle
- # Attached with a screw and to a 25 mm wide strap
- # Black stainless steel flap
- # Ideal for diverse application areas, e.g. carrying systems, outdoor gear, fashion

Note
Can be used for applications with specific safety requirements.
Not for use on dog leashes. Use for fastening dog collars only after successful suitability testing by the manufacturer.

Available with or without pull tab, hole dimensions: 4 x 2 mm.

All V-BUCKLE female parts are compatible with all V-BUCKLE male parts. This does not include size S V-BUCKLES, identified by the additional „S“ in the product name.

V-BUCKLE sewable 25 + pull tab

FL-FV-11203



Opening mechanism
lift
Webbing width
25 mm
Weight
ca. 26 g
Dimensions (L×W×H)
69,5 × 47,2 × 16,0 mm
Material
PA6, PA66GF30, stainless steel
Static breaking load
up to 60 kg
Colour
black/stainless steel
Assembly
sewing, strap, ladderlock

Sector
outdoor, professionals, sports, bags, footwear, apparel

- # Can be sewn directly onto or under materials and attached to a 25 mm wide strap
- # Ideal for textile applications, e.g. fashion, footwear, bags

Note
Not suitable for safety-related applications.
The breaking load depends on (and may vary according to) the way the product is stitched to the fabric.

Available with or without pull tab, hole dimensions: 4 x 2 mm.

All V-BUCKLE female parts are compatible with all V-BUCKLE male parts. This does not include size S V-BUCKLES, identified by the additional „S“ in the product name.

V-BUCKLE sewable 25 black flap + pull tab

FL-FV-11403



Opening mechanism
lift
Webbing width
25 mm
Weight
ca. 26 g
Dimensions (L×W×H)
69,5 × 47,2 × 16,0 mm
Material
PA6, PA66GF15, stainless steel
Static breaking load
up to 60 kg
Colour
black
Assembly
sewing, strap, ladderlock

Sector
apparel, bags, footwear, outdoor, sports, professionals

- # Can be sewn directly onto or under materials and attached to a 25 mm wide strap
- # Black stainless steel flap
- # Ideal for textile applications, e.g. fashion, footwear and bags

Note
Not suitable for safety-related applications.
The breaking load depends on (and may vary according to) the way the product is stitched to the fabric.
Available with or without pull tab, hole dimensions: 4 x 2 mm.
All V-BUCKLE female parts are compatible with all V-BUCKLE male parts. This does not include size S V-BUCKLES, identified by the additional „S“ in the product name.

V-BUCKLE sewable 40 SB + pull tab

FL-FV-13203



Opening mechanism
lift
Webbing width
40 mm
Weight
ca. 26 g
Dimensions (L×W×H)
72,3 × 47,2 × 16,0 mm
Material
PA6, PA66GF30, stainless steel
Static breaking load
up to 60 kg
Colour
black/stainless steel
Assembly
sewing, strap, single bar

Sector
apparel, bags, outdoor, professionals, sports

- # Buckle can be sewn directly onto or under materials and attached to 40 mm wide webbing
- # Single bar version - strap not adjustable after attachment
- # Ideal for textile applications, e.g. fashion, footwear, bags

Note
Not suitable for safety-related applications.
The breaking load depends on (and may vary according to) the way the product is stitched to the fabric.
Available with or without pull tab, hole dimensions: 4 x 2 mm.
All V-BUCKLE female parts are compatible with all V-BUCKLE male parts. This does not include size S V-BUCKLES, identified by the additional „S“ in the product name.

V-BUCKLE sewable 40 SB black flap + pull tab

FL-FV-13403



Opening mechanism
lift
Webbing width
40 mm
Weight
ca. 26 g
Dimensions (L×W×H)
72,3 × 47,2 × 16,0 mm
Material
PA6, PA66GF30, stainless steel
Static breaking load
up to 60 kg
Colour
black
Assembly
sewing, strap, single bar

Sector
apparel, bags, outdoor, professionals, sports

- # Can be sewn directly onto or under materials and attached to 40 mm wide webbing
- # Single bar version - the strap is not adjustable after attachment
- # Black stainless steel flap
- # Ideal for textile applications, e.g. fashion, footwear and bags

Note
Not suitable for safety-related applications.
The breaking load depends on (and may vary according to) the way the product is stitched to the fabric.
Available with or without pull tab, hole dimensions: 4 x 2 mm.
All V-BUCKLE female parts are compatible with all V-BUCKLE male parts. This does not include size S V-BUCKLES, identified by the additional „S“ in the product name.

V-BUCKLE sewable 40 + pull tab

FL-FV-12203



Opening mechanism
lift
Webbing width
40 mm
Weight
ca. 29 g
Dimensions (L×W×H)
80,0 × 47,2 × 16,0 mm
Material
PA6, PA66GF30, stainless steel
Static breaking load
up to 60 kg
Colour
black/stainless steel
Assembly
sewing, strap, ladderlock

Sector
apparel, bags, outdoor, sports

- # Buckle can be sewn directly onto or under materials and attached to a 40 mm wide strap
- # Ladderlock version - adjustable strap
- # Ideal for textile applications, e.g. fashion, footwear and bags

Note
Not suitable for safety-related applications.
The breaking load depends on (and may vary according to) the way the product is stitched to the fabric.
Available with or without pull tab, hole dimensions: 4 x 2 mm.
All V-BUCKLE female parts are compatible with all V-BUCKLE male parts. This does not include size S V-BUCKLES, identified by the additional „S“ in the product name.

V-BUCKLE sewable 40 black flap + pull tab

FL-FV-12403



Opening mechanism
lift
Webbing width
40 mm
Weight
ca. 29 g
Dimensions (L×W×H)
80,0 × 47,2 × 16,0 mm
Material
PA6, PA66GF30, stainless steel
Static breaking load
up to 60 kg
Colour
black
Assembly
sewing, strap, ladderlock

Sector
outdoor, sports, bags, apparel, professionals

- # Buckle can be sewn directly onto or under materials and attached to a 40 mm wide strap
- # Ladderlock version - adjustable strap
- # Black stainless steel flap
- # Ideal for textile applications, e.g. fashion, footwear and bags

Note
Not suitable for safety-related applications.
The breaking load depends on (and may vary according to) the way the product is stitched to the fabric.
Available with or without pull tab, hole dimensions: 4 x 2 mm.
All V-BUCKLE female parts are compatible with all V-BUCKLE male parts. This does not include size S V-BUCKLES, identified by the additional „S“ in the product name.

V-BUCKLE 40 SB + pull tab

FL-FV-13208



Opening mechanism
lift
Webbing width
40 mm
Weight
ca. 26 g
Dimensions (L×W×H)
80,0 × 49,0 × 13,5 mm
Material
PA66GF30, stainless steel
Static breaking load
70 kg
Colour
black/stainless steel
Assembly
strap, single bar

Sector
medical, bags, sports, outdoor, transportation, apparel, children, footwear, professionals

- # Self-securing: the higher the load, the more force is required to open the buckle
- # Single bar version for 40 mm wide webbing (fixed attachment on both sides - not adjustable)
- # Diverse application areas, e.g. carrying systems, outdoor gear, fashion

Note
Can be used for applications with specific safety requirements.
Not for use on dog leashes. Use for fastening dog collars only after successful suitability testing by the manufacturer.
Available with or without pull tab, hole dimensions: 4 x 2 mm.
All V-BUCKLE female parts are compatible with all V-BUCKLE male parts. This does not include size S V-BUCKLES, identified by the additional „S“ in the product name.

V-BUCKLE 40 SB black flap + pull tab

FL-FV-13408



Opening mechanism
lift
Webbing width
40 mm
Weight
ca. 26 g
Dimensions (L×W×H)
80,0 × 49,0 × 13,5 mm
Material
PA66GF30, stainless steel
Static breaking load
70 kg
Colour
black
Assembly
strap, single bar

Sector

professionals, footwear, children, apparel, transportation, outdoor, sports, bags, medical

- # Self-securing: the higher the load, the more force is required to open the buckle
- # Single bar black flap version for 40 mm webbing (fixed attachment on both sides - not adjustable)
- # Diverse application areas, e.g. carrying systems, outdoor gear, fashion

Note

Can be used for applications with specific safety requirements.

Not for use on dog leashes. Use for fastening dog collars only after successful suitability testing by the manufacturer.

Available with or without pull tab, hole dimensions: 4 x 2 mm.

All V-BUCKLE female parts are compatible with all V-BUCKLE male parts. This does not include size S V-BUCKLES, identified by the additional „S“ in the product name.

V-BUCKLE 40 LL + pull tab

FL-FV-12207



Opening mechanism
lift
Webbing width
40 mm
Weight
ca. 31 g
Dimensions (L×W×H)
95,0 × 49,0 × 14,0 mm
Material
PA66GF30, stainless steel
Static breaking load
70 kg
Colour
black/stainless steel
Assembly
strap, ladderlock

Sector

professionals, footwear, children, apparel, transportation, outdoor, sports, bags, medical

- # Self-securing: the higher the load, the more force is required to open the buckle
- # Ladderlock version for 40 mm wide webbing (adjustable on both sides)
- # Ideal for diverse application areas, e.g. carrying systems, outdoor gear, fashion

Note

Can be used for applications with specific safety requirements.

Not for use on dog leashes. Use for fastening dog collars only after successful suitability testing by the manufacturer.

Available with or without pull tab, hole dimensions: 4 x 2 mm.

All V-BUCKLE female parts are compatible with all V-BUCKLE male parts. This does not include size S V-BUCKLES, identified by the additional „S“ in the product name.

V-BUCKLE 40 LL black flap + pull tab

FL-FV-12407



Opening mechanism
lift
Webbing width
40 mm
Weight
ca. 31 g
Dimensions (L×W×H)
95,0 × 49,0 × 14,0 mm
Material
PA66GF30, stainless steel
Static breaking load
70 kg
Colour
black
Assembly
strap, ladderlock

Sector

medical, bags, sports, outdoor, transportation, apparel, children, footwear, professionals

- # Self-securing: the higher the load, the more force is required to open the buckle
- # Ladderlock version for 40 mm wide webbing (adjustable on both sides)
- # Black stainless steel flap
- # Ideal for diverse application areas, e.g. carrying systems, outdoor gear, fashion

Note

Can be used for applications with specific safety requirements.

Not for use on dog leashes. Use for fastening dog collars only after successful suitability testing by the manufacturer.

Available with or without pull tab, hole dimensions: 4 x 2 mm.

All V-BUCKLE female parts are compatible with all V-BUCKLE male parts. This does not include size S V-BUCKLES, identified by the additional „S“ in the

V-BUCKLE S 15 SB + pull tab

FL-FV-26211



Opening mechanism
lift

Webbing width
15 mm

Weight
ca. 8 g

Dimensions (L×W×H)
38,0 × 21,0 × 9,3 mm

Material
PA66GF30, stainless steel

Static breaking load
34 kg

Colour
black/stainless steel

Assembly
strap, single bar

Sector
bags, apparel, footwear

- # Small version for 15 mm wide straps
- # Compact design is ideal for fashion, footwear, and accessories

Note
Not suitable for safety-related applications.

The black pull tab is included in the scope of delivery.

V-BUCKLE S female parts are compatible with S-sized V-BUCKLE male parts. These can be identified by the additional „S“ in the product name.

V-BUCKLE S 15 SB black flap + pull tab

FL-FV-26411



Opening mechanism
lift

Webbing width
15 mm

Weight
ca. 8 g

Dimensions (L×W×H)
38,0 × 21,0 × 9,3 mm

Material
PA66GF30, stainless steel

Static breaking load
34 kg

Colour
black

Assembly
single bar, strap

Sector
footwear, apparel, bags

- # Small version for 15 mm wide straps
- # Black stainless steel flap
- # Compact design is ideal for fashion, footwear, and accessories

Note
Not suitable for safety-related applications.

The black pull tab is included in the scope of delivery.

V-BUCKLE S female parts are compatible with S-sized V-BUCKLE male parts. These can be identified by the additional „S“ in the product name.

V-BUCKLE S 20 SB + pull tab

FL-FV-27212



Opening mechanism
lift

Webbing width
20 mm

Weight
ca. 8 g

Dimensions (L×W×H)
38,0 × 27,4 × 9,3 mm

Material
PA66GF30, stainless steel

Static breaking load
27 kg

Colour
black/stainless steel

Assembly
strap, single bar

Sector
apparel, bags, footwear

- # Small version for 20 mm wide straps
- # Compact design is ideal for fashion, footwear, and accessories

Note
Not suitable for safety-related applications.

The black pull tab is included in the scope of delivery.

V-BUCKLE S female parts are compatible with S-sized V-BUCKLE male parts. These can be identified by the additional „S“ in the product name.

V-BUCKLE S 20 SB black flap + pull tab

FL-FV-27412



Opening mechanism
lift

Webbing width
20 mm

Weight
ca. 8 g

Dimensions (L×W×H)
38,0 × 27,4 × 9,3 mm

Material
PA66GF30, stainless steel

Static breaking load
27 kg

Colour
black

Assembly
strap, single bar

Sector
apparel, bags, footwear

- # Small version for 20 mm wide straps
- # Black stainless steel flap
- # Compact design is ideal for fashion, footwear, and accessories

Note
Not suitable for safety-related applications.

The black pull tab is included in the scope of delivery.

V-BUCKLE S female parts are compatible with S-sized V-BUCKLE male parts. These can be identified by the additional „S“ in the product name.



Slim, small and quiet – a revolution in fastening systems

The FIDLOCK STRIPE products are revolutionary fasteners that were developed especially for textile applications. Small, slim and particularly quiet: the STRIPE fasteners are a predestined and innovative alternative to conventional hook-and-loop fasteners. Therefore, they are an ideal choice for apparel, e.g. on collars or sleeves. This basic principle evolved into multiple product variants that are also ideal for caps or even shoes. Sewn or welded into materials, the STRIPE can be attached to your products almost invisibly. Versions designed for footwear additionally offer attachment to straps. These fasteners may be small - but the impression they make is great.

Patents: Our STRIPE variants are unique magnetic fasteners for textiles. As a great alternative to hook-and-loop fasteners, STRIPES boast with quiet opening and don't get caught on the fabric. Therefore, products of the STRIPE family are protected by at least one of the following published patent applications:

STRIPE normal and STRIPE flex: CN108495569, EP3405062, JP2019502493, KR1020180105170, US20190343239

STRIPE flex only: CN110785100, DE102017210140, EP3638069, US20180360147

You can find detailed and updated information on fidlock.com/en/patents.

STRIPE

STRIPE X3

01310-000002 (BLK)



Opening mechanism
lift

Weight
ca. 8 g

Dimensions (L×W×H)
54,1 × 30,3 × 5,4 mm

Material
PA6

Colour
black

Assembly
sewing

Sector
apparel, outdoor

- # Sewable onto or under materials
- # Three engagement levels for adjustment
- # Ideal for textile applications, e.g. collars, sleeves, trousers, shoes

Note
Not suitable for safety-related applications.
Glueing or welding is also possible, depending on the material.

STRIPE X3 flex

01312-000002 (BLK)



Opening mechanism
lift

Weight
ca. 8 g

Dimensions (L×W×H)
54,1 × 30,3 × 5,4 mm

Material
TPU (685A)

Colour
black

Assembly
sewing, welding

Sector
apparel, outdoor

- # Flexible version that bends to fit curves
- # Sewable onto or under materials
- # Three engagement levels for adjustment
- # Ideal for textile applications, e.g. collars, sleeves, trousers, shoes

Note
Not suitable for safety-related applications.
Glueing or welding is also possible, depending on the material.

STRIPE slim X5

F1341-000002 (BLK)



Opening mechanism
lift

Weight
ca. 13 g

Dimensions (L×W×H)
female: 79,1 × 21,8 × 5,4 mm; male: 80,5 × 21,0 × 4,4 mm

Material
PA6

Colour
black

Assembly
sewing

Sector
apparel, outdoor, sports

- # Very slim version
- # Sewable onto or under materials
- # Five engagement levels for adjustment
- # Ideal for textile applications, e.g. caps, collars, sleeves, trousers

Note
Not suitable for safety-related applications.
Glueing or welding is also possible, depending on the material.
This fastener features a FIDLOCK logo.

STRIPE slim X5 SE

F1342-000012(BLK)



Weight
ca. 13 g

Dimensions (L×W×H)
female: 79,1 × 21,8 × 5,4 mm; male: 80,5 × 21,0 × 4,4 mm

Material
PA6

Colour
black

Assembly
sewing

Sector

apparel, outdoor, sports

- # Very slim version with optimized magnet usage
- # Sewable onto or under materials
- # Five engagement levels for adjustment
- # Ideal for textile applications, e.g. caps, collars, sleeves, trousers

Note

Not suitable for safety-related applications.

Glueing or welding is also possible, depending on the material.

STRIPE X5 flex

01343-000002(BLK)



Opening mechanism
lift

Weight
ca. 12 g

Dimensions (L×W×H)
76,5 × 30,3 × 5,4 mm

Material
TPU

Assembly
sewing, welding

Sector

apparel, outdoor

- # Flexible version that bends to fit curves
- # Sewable onto or under materials
- # Five engagement levels for adjustment
- # Ideal for textile applications, e.g. collars, sleeves, trousers, shoes

Note

Not suitable for safety-related applications.

Glueing or welding is also possible, depending on the material.

STRIPE FW SB20

F1370-000002(BLK)



Opening mechanism
lift

Weight
ca. 7 g

Dimensions (L×W×H)
31,0 × 31,0 × 8,9 mm

Material
PA6

Colour
black

Assembly
strap, sewing, single bar

Sector

footwear, apparel

- # Developed for footwear
- # Sewable male part and female part for 20 mm wide webbing
- # Strap not adjustable

Note

Not suitable for safety-related applications.

The male part of this fastener can be sewn onto or under materials. It can also be glued or welded, depending on the material.

This fastener features a FIDLOCK logo and a black pull tab.

STRIPE FW DR20

F1371-000002(BLK)



Opening mechanism
lift
Weight
ca. 9 g
Dimensions (L×W×H)
41,7 (incl. D-ring) × 31,0 × 10,3 mm
Material
PA6, stainless steel
Colour
black
Assembly
strap, sewing, glide bar

Sector
footwear, apparel

- # Developed for footwear
- # Sewable male part and female part for 20 mm wide webbing
- # D-ring with a moving bar to enable adjustment of the strap

Note
Not suitable for safety-related applications.

The male part of this fastener can be sewn onto or under materials. It can also be glued or welded, depending on the material.

This fastener features a FIDLOCK logo and a black pull tab.

STRIPE FW rope

F1390-000002(BLK)



Opening mechanism
lift
Weight
ca. 7 g
Dimensions (L×W×H)
32,0 × 31,0 × 8,0 mm
Rope diameter
1,8 - 2,5 mm
Material
PA6
Colour
black
Assembly
sewing, rope
For material thickness
up to 2,0 mm when used as underlay

Sector
apparel, footwear

- # Developed for footwear
- # Sewable male part and female part for 1,8 - 2,5 mm thick rope
- # Version for 2,5 - 3,5 mm thick ropes available upon request (article no. F1390-000012(BLK))
- # Synthetic fibre ropes recommended
- # Rope offers continuous variability

Note
Not suitable for safety-related applications.

Also available as a version for 2,5 - 3,5 mm thick ropes (article no. F1390-000012(BLK)).

The rope is inhibited depending on its diameter. The rope is not included in the scope of delivery.

STRIPE FW rope RC

F1390-000002(5415)R



Opening mechanism
lift
Weight
ca. 7 g
Dimensions (L×W×H)
32,0 × 31,0 × 8,0 mm
Rope diameter
1,8 - 2,5 mm
Material
PA6, NdFeB, epoxy
Colour
5415
Assembly
sewing, rope
For material thickness
up to 2,0 mm when used as underlay

Sector
footwear, apparel

- # Made from recycled plastic
- # Developed for footwear
- # Sewable male part and female part for 1,8 - 2,5 mm thick rope
- # Version for 2,5 - 3,5 mm thick ropes available upon request (article no. F1390-000012(BLK)R)
- # Synthetic fibre ropes recommended
- # Rope offers continuous variability

Note
Not suitable for safety-related applications.

Glueing or welding is also possible, depending on the material.

Due to the recycled material dark spots may appear.



STRIPE FW rope RC

F1390-000002(BLK)R

New



Opening mechanism

lift

Weight

ca. 7 g

Dimensions (L×W×H)

32,0 × 31,0 × 8,0 mm

Rope diameter

1,8 - 2,5 mm

Material

PA6, NdFeB, epoxy

Colour

black

Assembly

sewing, rope

For material thickness

up to 2,0 mm when used as underlay



Sector

apparel, footwear

- # Made from recycled plastic
- # Developed for footwear
- # Sewable male part and female part for 1,8 - 2,5 mm thick rope
- # Version for 2,5 - 3,5 mm thick ropes available upon request (article no. F1390-000012(BLK)R)
- # Synthetic fibre ropes recommended
- # Rope offers continuous variability

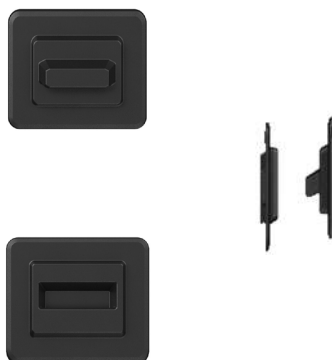
Note

Not suitable for safety-related applications.

Glueing or welding is also possible, depending on the material.

STRIPE X1 underlay

01362-000001 (BLK)



Opening mechanism

lift

Weight

ca. 6 g

Dimensions (L×W×H)

female: 31,4 × 35,1 × 4,4 mm; male: 29,6 × 34,7 × 6,4 mm

Material

PA6

Colour

black

Assembly

sewing

Sector

apparel, outdoor

- # Almost invisibly sewn under materials
- # Only one engagement level - no adjustment
- # Ideal for textile applications, e.g. apparel

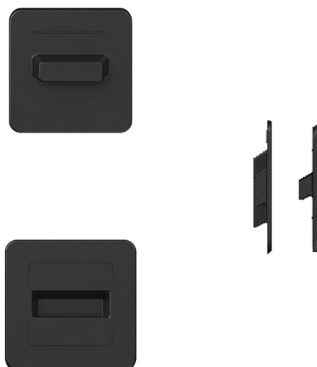
Note

Not suitable for safety-related applications.

This STRIPE is designed to be sewn under the material.

STRIPE X1 overlay

01363-000002(BLK)



Opening mechanism

lift

Weight

ca. 6 g

Dimensions (L×W×H)

female: 32,4 × 32,2 × 4,4 mm; male: 30,8 × 30,3 × 4,4 mm

Material

PA6

Colour

black

Assembly

sewing

Sector

apparel, outdoor

- # Version that is sewn onto materials
- # Only one engagement level - no adjustment
- # Ideal for textile applications, e.g. apparel

Note

Not suitable for safety-related applications.

This STRIPE is designed to be sewn on top of materials.

WINCH momentum left

F1500-L00012(BLK)



Opening mechanism
lift
Weight
ca. 13 g
Dimensions
35 x 35 mm (L x W of total base)
Dimensions (ø; height)
32,8 mm; 10,5 mm (handle)
Rope diameter
1,2 - 2,75 mm
Material
PA6, PA6GF15, ABS
Static breaking load
20 kg
Colour
black
Assembly
sewing, welding

Sector
professionals, footwear, apparel, medical,
transportation, outdoor, sports

- # Combines properties of a ratchet and a fastener
- # Handle detachable from the base - laces unwind automatically
- # Use with one or multiple laces (depending on diameter)
- # Counterclockwise rotation (version with clockwise rotation is available (article no. F1500-R))
- # Diverse application areas, e.g. footwear, prostheses, bags

Note
Not suitable for safety-related applications.
Parts are available separately.
Laces/ropes are not included in the scope of delivery.

WINCH momentum right

F1500-R00012(BLK)



Opening mechanism
lift
Weight
ca. 13 g
Dimensions
35 x 35 mm (L x W of total base)
Dimensions (ø; height)
32,8 mm; 10,5 mm (handle)
Rope diameter
1,2 - 2,75 mm
Material
PA6, PA6GF15, ABS
Static breaking load
20 kg
Colour
black
Assembly
sewing, welding

Sector
professionals, footwear, apparel, medical,
transportation, outdoor, sports

- # Combines properties of a ratchet and a fastener
- # Handle detachable from the base - laces unwind automatically
- # Use with one or multiple laces (depending on diameter)
- # Clockwise rotation (version with counterclockwise rotation is available (article no. F1500-L))
- # Diverse application areas, e.g. footwear, prostheses, bags

Note
Not suitable for safety-related applications.
Parts are available separately.
Laces/ropes are not included in the scope of delivery.

WINCH momentum left clip-in base

F1560-L00012(BLK)



Opening mechanism
lift
Weight
ca. 11 g
Dimensions
37 x 37 mm (L x W of total base)
Dimensions (ø; height)
32,8 mm; 10,5 mm (handle)
Rope diameter
1,2 - 2,75 mm
Material
PA66GF15, ABS, PA6
Static breaking load
20 kg (handle)
Colour
black
Assembly
clip together, sewing, rope
For material thickness
up to 3,0 mm
Tools for assembly
TOOL 30

Sector
apparel, footwear, professionals

- # Clip-in base - magnetic core of base can be inserted at the end of production (**click here** for information about the assembly tool)
- # Combines properties of a ratchet and a fastener
- # Handle detachable from the base - laces unwind automatically
- # Use with one or multiple laces (depending on diameter)
- # Counterclockwise rotation (version with clockwise rotation is available (article no. F1560-R))
- # Diverse application areas, e.g. footwear & apparel

Note
Not suitable for safety-related applications.
Parts are available separately.
Laces/ropes are not included in the scope of delivery.

WINCH momentum right clip-in base

F1560-R00012(BLK)



Opening mechanism
lift

Weight
ca. 11 g

Dimensions
37 x 37 mm (L x W of total base)

Dimensions (ø; height)
32,8 mm; 10,5 mm (handle)

Rope diameter
1,2 - 2,75 mm

Material
PA66GF15, ABS, PA6

Static breaking load
20 kg (handle)

Colour
black

Assembly
clip together, sewing, rope

For material thickness
up to 3,0 mm

Tools for assembly
TOOL 30

Sector
apparel, footwear, professionals

- # Clip-in base - magnetic core of base can be inserted at the end of production ([click here](#) for information about the assembly tool)
- # Combines properties of a ratchet and a fastener
- # Handle detachable from the base - laces unwind automatically
- # Use with one or multiple laces (depending on diameter)
- # Clockwise rotation (version with counterclockwise rotation is available (article no. F1560-R))
- # Diverse application areas, e.g. footwear & apparel

Note
Not suitable for safety-related applications.
Parts are available separately.
Laces/ropes are not included in the scope of delivery.

WINCH elegance left

F1510-L00002(BLK)



Opening mechanism
lift

Weight
ca. 14 g

Dimensions
35 x 35 mm (L x W of total base)

Dimensions (ø; height)
34,0 mm; 10,49 mm (handle)

Rope diameter
1,2 - 2,75 mm

Material
PA6, PA6GF15, ABS, TPU

Static breaking load
20 kg

Colour
black

Assembly
sewing, welding

Sector
professionals, footwear, apparel, medical, transportation, outdoor, sports

- # Handle with soft-touch surface and additional pull tab
- # Combines properties of a ratchet and a fastener
- # Handle detachable from the base - laces unwind automatically
- # Use with one or multiple laces (depending on diameter)
- # Counterclockwise rotation (version with clockwise rotation is available (article no. F1510-R))
- # Diverse application areas, e.g. footwear, prostheses, bag

Note
Not suitable for safety-related applications.
Parts are available separately.
Laces/ropes are not included in the scope of delivery.

WINCH elegance right

F1510-R00002(BLK)



Opening mechanism
lift

Weight
ca. 14 g

Dimensions
35 x 35 mm (L x W of total base)

Dimensions (ø; height)
34,0 mm; 10,49 mm (handle)

Rope diameter
1,2 - 2,75 mm

Material
PA6, PA6GF15, ABS, TPU

Static breaking load
20 kg

Colour
black

Assembly
sewing, welding

Sector
professionals, footwear, apparel, medical, transportation, outdoor, sports

- # Handle with soft-touch surface and additional pull tab
- # Combines properties of a ratchet and a fastener
- # Handle detachable from the base - laces unwind automatically
- # Use with one or multiple laces (depending on diameter)
- # Clockwise rotation (version with counterclockwise rotation is available (article no. F1510-L))
- # Diverse application areas, e.g. footwear, prostheses, bags

Note
Not suitable for safety-related applications.
Parts are available separately.
Laces/ropes are not included in the scope of delivery.

WINCH elegance left clip-in base

F1550-L00002 (BLK)



Opening mechanism
lift

Weight
ca. 12 g

Dimensions
37 x 37 mm (L x W of total base)

Dimensions (ø; height)
34,0 mm; 10,49 mm (handle)

Rope diameter
1,2 - 2,75 mm

Material
PA6, PA6GF15, ABS, TPU

Static breaking load
20 kg (handle)

Colour
black

Assembly
sewing, clip together, rope

For material thickness
up to 3,0 mm

Tools for assembly
TOOL 30

Sector
apparel, footwear, professionals

- # Clip-in base - magnetic core of base can be inserted at the end of production ([click here](#) for information about the assembly tool)
- # Handle with soft-touch surface and additional pull tab
- # Combines properties of a ratchet and a fastener
- # Handle detachable from the base - laces unwind automatically
- # Use with one or multiple laces (depending on diameter)
- # Counterclockwise rotation (version with clockwise rotation is available (article no. F1550-R))

Note
Not suitable for safety-related applications.
Parts are available separately.
Laces/ropes are not included in the scope of delivery.

WINCH elegance right clip-in base

F1550-R00002 (BLK)



Opening mechanism
lift

Weight
ca. 12 g

Dimensions
37 x 37 mm (L x W of total base)

Dimensions (ø; height)
34,0 mm; 10,49 mm (handle)

Rope diameter
1,2 - 2,75 mm

Material
PA6, PA6GF15, ABS, TPU

Static breaking load
20 kg (handle)

Colour
black

Assembly
sewing, clip together, rope

For material thickness
up to 3,0 mm

Tools for assembly
TOOL 30

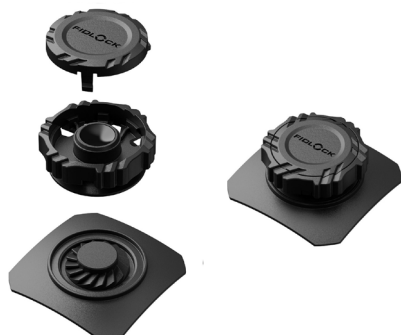
Sector
apparel, footwear, professionals

- # Clip-in base - magnetic core of base can be inserted at the end of production ([click here](#) for information about the assembly tool)
- # Handle with soft-touch surface and additional pull tab
- # Combines properties of a ratchet and a fastener
- # Handle detachable from the base - laces unwind automatically
- # Use with one or multiple laces (depending on diameter)
- # Clockwise rotation (version with counterclockwise rotation is available (article no. F1550-L))

Note
Not suitable for safety-related applications.
Parts are available separately.
Laces/ropes are not included in the scope of delivery.

WINCH compact left

F1520-L00022 (BLK)



Opening mechanism
lift

Weight
ca. 7 g

Dimensions
35 x 35 mm (L x W of total base)

Dimensions (ø; height)
26,4 mm; 6,2 mm (handle)

Rope diameter
1 - 1,6 mm

Material
PA6, PP

Static breaking load
16 kg

Colour
black

Assembly
sewing, rope

For material thickness
up to 1,3 mm

Sector
footwear, apparel, professionals

- # Version with a smaller handle and compact design
- # Use with laces/ropes: easy tightening and continuously variable
- # Handle detachable from the base - laces unwind automatically
- # Use with one or two laces
- # Counterclockwise rotation (version with clockwise rotation is available (article no. F1520-R))
- # Primarily developed for footwear
- # By using the WINCH diameter reduction plate (article no. 01520), laces with a diameter of less than 1.5 mm can be used

Note
Not suitable for safety-related applications.
Parts are available separately.
Laces/ropes/diameter reduction plate are not included in the scope of delivery.

WINCH compact right

F1520-R00022(BLK)



Opening mechanism
lift

Weight
ca. 7 g

Dimensions
35 x 35 mm (L x W of total base)

Dimensions (ø; height)
26,4 mm; 6,2 mm (handle)

Rope diameter
1 - 1,6 mm

Material
PA6, PP

Static breaking load
16 kg

Colour
black

Assembly
sewing, rope

For material thickness
up to 1,3 mm

Sector
footwear, apparel, professionals

- # Version with a smaller handle and compact design
- # Use with laces/ropes: easy tightening and continuously variable
- # Handle detachable from the base - laces unwind automatically
- # Use with one or two laces
- # Clockwise rotation (version with counterclockwise rotation is available (article no. F1520-L))
- # Primarily developed for footwear

Note
Not suitable for safety-related applications.
Parts are available separately.

Laces/ropes/diameter reduction plate are not included in the scope of delivery.
This version has no ratchet functionality.

WINCH diameter reduction plate

01520-DP0002(21C)



Rope diameter
- 1,5mm

Assembly
rope

- # Includes 20 pieces, for 20 WINCH
- # Reduction plate allows the usage of thinner laces (<1.5 mm)
- # Rope is not included in the scope of delivery

Note
Add on, which allows the usage of thinner laces.

WINCH compact left clip-in base

F1540-L00022(BLK)



Opening mechanism
lift

Weight
ca. 9 g

Dimensions
37 x 37 mm (L x W of total base)

Dimensions (ø; height)
26,4 mm; 5,1 mm (handle)

Rope diameter
1 - 1,6 mm

Material
PA6, PP

Static breaking load
16 kg (handle)

Colour
black

Assembly
clip together, sewing, rope

For material thickness
up to 3,0 mm

Tools for assembly
TOOL 30

Sector
apparel, footwear, professionals

- # Clip-in base - magnetic core of base can be inserted at the end of production (**click here** for information about the assembly tool)
- # Version with a smaller handle and compact design
- # Use with one or two laces/ropes: easy tightening and continuously variable
- # Handle detachable from the base - laces unwind automatically
- # Counterclockwise rotation (version with clockwise rotation is available (article no. F1520-R))
- # Primarily developed for footwear

Note
Not suitable for safety-related applications.
Parts are available separately.

Laces/ropes are not included in the scope of delivery.
This version has no ratchet-functionality.

WINCH compact right clip-in base

F1540-R00022(BLK)



Opening mechanism
lift

Weight
ca. 9 g

Dimensions
37 x 37 mm (L x W of total base)

Dimensions (ø; height)
26,4 mm; 5,1 mm (handle)

Rope diameter
1 - 1,6 mm

Material
PA6, PP

Static breaking load
16 kg (handle)

Colour
black

Assembly
clip together, sewing, rope

For material thickness
up to 3,0 mm

Tools for assembly
TOOL 30

Sector

apparel, footwear, professionals

- # Clip-in base - magnetic core of base can be inserted at the end of production ([click here](#) for information about the assembly tool)
- # Version with a smaller handle and compact design
- # Use with one or two laces/ropes: easy tightening and continuously variable
- # Handle detachable from the base - laces unwind automatically
- # Clockwise rotation (version with counterclockwise rotation is available (article no. F1520-L))
- # Primarily developed for footwear

Note

Not suitable for safety-related applications.

Parts are available separately.

Laces/ropes are not included in the scope of delivery.

This version has no ratchet-functionality.



Innovative fastening components for children's products

Our JUNIOR products combine the intuitive and quick handling of our one-of-a-kind FIDLOCK concept with reliable and secure fastening. High ease-of-use and the automatic closing mechanism that causes the components to securely snap into place when being closed facilitate daily routines in childcare. This product family includes all our 3-point and 5-point locks with single-action or double-action opening mechanisms and are ideal for applications such as baby buggies (depending on the implementation of the fastener on the product, use for safety-related applications only after successful suitability testing by the manufacturer). They are also ideal for diverse other application areas with 3-point and 5-point straps systems. The JUNIOR products can be customized with a logo or colours to meet the design of your products!

Patents: Our JUNIOR products were meticulously designed to meet diverse safety requirements or feature unique functionalities. Therefore, our JUNIOR products are protected by at least one of the following patents:

JUNIOR slide 3-point / 5-point single action: US8794682, AU2007272165, CA2681141, CN101646362, EP2040572 (AT, DE, FR, GB, IT, NL), HK1140388, IN309795, JP5060554, KR101130654, RU2415623, US8430434, EP2436280 (AT, CH, DE, ES, FR, GB, IT, NL, PL, TR), CN101925313, EP2252176 (AT, DE, FR, GB), US8353544, VN10019341, CN103957739, EP2782468 (AT, DE, FR, GB, IT), US9555935

JUNIOR slide 3-point / 5-point double action: CN104116273, CN102481035, EP2470041 (DE, FR, GB), US10626636, US9572410, US8794682, AU2007272165, CA2681141, CN101646362, EP2040572 (AT, DE, FR, GB, IT, NL), HK1140388, IN309795, JP5060554, KR101130654, RU2415623, US8430434, EP2436280 (AT, CH, DE, ES, FR, GB, IT, NL, PL, TR), CN101925313, EP2252176 (AT, DE, FR, GB), US8353544, VN10019341, CN103957739, EP2782468 (AT, DE, FR, GB, IT), US9555935

You can find detailed and updated information on fidlock.com/en/patents.

JUNIOR

JUNIOR slide 3-point single action

F5170-000012(BLK)



Opening mechanism
slide

Webbing width
25/40 mm

Weight
ca. 50 g

Dimensions (L×W×H)
96,6 × 77,0 × 13,5 mm

Material
PA66GF15, ABS, steel (zinc coated), stainless steel

Static breaking load
40 kg

Colour
black

Assembly
strap, single bar

Sector

children, transportation

- # 3-point lock with single-handed operation
- # Assembly with three straps: 1 x 40,0 mm strap and 2 x 20,0 or 2 x 25,0 mm straps
- # Ideal for applications with 3-point straps, e.g. buggies, highchairs (depending on the implementation of the fastener on the product)

Note

Not suitable for the safety-related use on children's car/bike seats, cargo bikes or bike trailers. Does not meet Group 0 or 1 standards for child car seats.

Use for safety-related applications only after successful suitability testing by the manufacturer.

JUNIOR slide 3-point double action

F5171-000012(BLK)



Opening mechanism
push & slide

Webbing width
25/40 mm

Weight
ca. 50 g

Dimensions (L×W×H)
96,6 × 77,0 × 13,5 mm

Material
PA66GF15, ABS, steel (zinc coated), stainless steel

Static breaking load
40 kg

Colour
black

Assembly
strap, single bar

Sector

children, transportation

- # 3-point lock with double-action opening: push down first, then slide laterally
- # Assembly with 3 straps: 1 x 40,0 mm strap and 2 x 20,0 or 2 x 25,0 mm straps
- # Ideal for applications with 3-point straps, e.g. buggies and similar strap systems (depending on the implementation of the fastener on the product)

Note

Not suitable for the safety-related use on children's car/bike seats, cargo bikes or bike trailers. Does not meet Group 0 or 1 standards for child car seats.

Use for safety-related applications only after successful suitability testing by the manufacturer.

JUNIOR slide 5-point single action

F5175-000002(BLK)



Opening mechanism
slide

Webbing width
25/40 mm

Weight
ca. 60 g

Dimensions (L×W×H)
100,0 × 94,0 × 17,0 mm

Material
PA66GF15, ABS, PA6

Static breaking load
40 kg

Colour
black

Assembly
strap, single bar

Sector

transportation, children

- # 5-point lock
- # Assembly with five straps: 1 x 40,0 mm strap and 4 x 20,0 or 4 x 25,0 mm straps
- # Male parts of the shoulder and waist straps can be opened together or separately
- # Ideal for applications with 5-point straps, e.g. buggies, highchairs (depending on the implementation of the fastener on the product)

Note

Not suitable for the safety-related use on children's car/bike seats, cargo bikes or bike trailers. Does not meet Group 0 or 1 standards for child car seats.

Use for safety-related applications only after successful suitability testing by the manufacturer.

JUNIOR slide 5-point double action

F5176-000002 (BLK)



Opening mechanism
push & slide
Webbing width
25/40 mm
Weight
ca. 60 g
Dimensions (L×W×H)
100,0 × 94,0 × 17,0 mm
Material
PA66GF15, ABS, steel (zinc coated), stainless steel
Static breaking load
40 kg
Colour
black
Assembly
strap, single bar

Sector
children, transportation

- # 5-point lock with double-action opening: push down first, then slide laterally
- # Assembly with five straps: 1 x 40,0 mm strap and 4 x 20,0 or 4 x 25,0 mm straps
- # Male parts of the shoulder and waist straps can be opened together or separately
- # Ideal for applications with 5-point straps, e.g. buggies, highchairs (depending on the implementation of the fastener on the product)
- # Also suited for applications on cargo bikes and bike trailers

Note

Not suitable for the safety-related use on children's car/bike seats, cargo bikes or bike trailers. Does not meet Group 0 or 1 standards for child car seats.

Use for safety-related applications only after successful suitability testing by the manufacturer.

JUNIOR press 3-point lock

F9420-000022 (BLK)



Opening mechanism
double press
Webbing width
25 mm
Weight
ca. 57 g
Dimensions (L×W×H)
97,7 × 99,28, 22,21 mm
Material
PA66GF30, PA66GF15, POM
Static breaking load
40 kg
Colour
black | grey
Assembly
strap, single bar

Sector
children, transportation, outdoor

- # 3-point lock that combines the comfort of intuitive single-handed opening with single-action safety requirements
- # Press the button in a pinching motion to open
- # Unintentional opening by toddlers is prevented by the resistance of the button
- # Assembly with three straps: 3 x 25 mm
- # Developed for child-seats and strollers with 3-point strap systems (suitability must be tested by customer), also suited for applications on cargo bikes and bike trailers
- # Please refer to our website for exact consideration of standards

Note

Not for use on child car seats.

Use for safety-related applications only after successful suitability testing by the manufacturer.

JUNIOR press 5-point loop

F9421-000022 (BLK)



Opening mechanism
double press
Webbing width
25 mm
Weight
ca. 57 g
Dimensions (L×W×H)
97,7 × 83,1 × 22,2 mm
Material
PA66GF30, PA66GF15, POM
Static breaking load
40 kg
Colour
black | grey
Assembly
strap, single bar

Sector
children, transportation, outdoor

- # 5-point lock that combines the comfort of intuitive single-handed opening with single-action safety requirements
- # Press the button in a pinching motion to open
- # Unintentional opening by toddlers is prevented by the resistance of the button
- # Assembly with three straps - shoulder/waist straps are looped through the fastener to create a 5-point attachment
- # Ideal for applications with 5-point straps, e.g. strollers, cargo and buggys (suitability must be tested by the customer)
- # Please refer to our website for exact consideration of standards

Note

Not for use on child car seats.

Use for safety-related applications only after successful suitability testing by the manufacturer.

JUNIOR *press 5-point loop 30mm*
 F9422-000022(BLK)



Opening mechanism
 single press
 Webbing width
 30 mm
 Weight
 ca. 57 g
 Dimensions (L×W×H)
 97,3 × 83,1 × 22,2 mm
 Material
 PA66GF30, PA66GF15, POM
 Static breaking load
 40 kg
 Colour
 black | grey
 Assembly
 single bar, strap

Sector
 children, outdoor, transportation

- # 5-point loop that combines the comfort of intuitive single-handed opening with double-action safety requirements
- # This version requires a 30 mm webbing width on the shoulder and hip belt
- # Assembly with three straps - shoulder/waist straps are looped through the fastener to create a 5-point attachment
- # Ideal for applications with 5-point straps, e.g. strollers and buggys (suitability must be tested by the customer)
- # Please refer to our website for exact consideration of standards

Note
 Not for use on child car seats.
 Use for safety-related applications only after successful suitability testing by the manufacturer.



Special fasteners for special applications

FIDLOCK SPECIALS are fastening solutions that provide new opportunities due to their unique properties that turn the moment of opening and closing into a positive and memorable experience for users. Offering potential for customization, these fasteners can meet individual requirements of your brand and design. Therefore, product designers have a range of unique and innovative fasteners at their disposal. If applied correctly, these fasteners can create highly premium products with added value due to intuitive fastening, high ease of use and fun handling.

The product SNAP stackable is subject of an exclusivity agreement with a customer of FIDLOCK, limiting the supply of these products within the countries of the European Union, Swiss, Norway, U.K. and Turkey and for the destination of sale of finished products to end-consumers within the countries of the European Union, Swiss, Norway, U.K. and Turkey for integration into apparel for children and apparel for people with disabilities.

Patents: Our SPECIALS product family comprises diverse fasteners, which all have features uniquely adapted purpose and possible application areas. Therefore, products of the SPECIALS family are protected by at least one of the following patents or patent applications:

SNAP stackable: Applied for patent, still undisclosed

You can find detailed and updated information on fidlock.com/en/patents.

SPECIALS

SPECIALS SNAP stackable S

09210-000001 (BLK)



Opening mechanism
lift

Weight
ca. 2 g

Dimensions (ø; height)
28,0 mm; 7,7 mm

Punch hole for assembly
13,0 mm

Material
PP

Static breaking load
depending on application

Colour
black

Assembly
sewing, pressed together

For material thickness
1,0 - 1,5 mm

Sector
children, apparel, outdoor, medical

- # Size S - three sizes available (S, M, L)
- # Double-sided stackable fastening component
- # Opens without breaking when the force exceeds its capacity
- # Parts are pressed and sewed together through a hole in the material
- # Ideal for apparel and textile products for children, e.g. jackets, bibs
- # This product is subject to an exclusivity agreement, please refer to the SPECIALS information page

Note
Not suitable for safety-related applications.
Connect both parts by pressing. Must be sewn to the material.
Two SNAP stackables need to be combined for one fastener.

SPECIALS SNAP stackable M

09211-000001 (BLK)



Opening mechanism
lift

Weight
ca. 3 g

Dimensions (ø; height)
31,0 mm; 7,7 mm

Punch hole for assembly
16,0 mm

Material
PP

Static breaking load
depending on application

Colour
black

Assembly
pressed together, sewing

For material thickness
1,0 - 1,5 mm

Sector
children, apparel, outdoor, medical

- # Size M - three sizes available (S, M, L)
- # Double-sided stackable fastening component
- # Opens without breaking when the force exceeds its capacity
- # Parts are pressed and sewed together through a hole in the material
- # Ideal for apparel and textile products for children, e.g. jackets, bibs
- # This product is subject to an exclusivity agreement, please refer to the SPECIALS information page

Note
Not suitable for safety-related applications.
Connect both parts by pressing. Must be sewn to the material.
Two SNAP stackables need to be combined for one fastener.

SPECIALS SNAP stackable L

09212-000001 (BLK)



Opening mechanism
lift

Weight
ca. 4 g

Dimensions (ø; height)
36,0 mm; 7,7 mm

Punch hole for assembly
19,0 mm

Material
PP

Static breaking load
depending on application

Colour
black

Assembly
pressed together, sewing

For material thickness
1,0 - 1,5 mm

Sector
children, apparel, outdoor, medical

- # Size L - three sizes available (S, M, L)
- # Double-sided stackable fastening component
- # Opens without breaking when the force exceeds its capacity
- # Parts are pressed and sewed together through a hole in the material
- # Ideal for apparel and textile products for children, e.g. jackets, bibs
- # This product is subject to an exclusivity agreement, please refer to the SPECIALS information page
- #

Note
Not suitable for safety-related applications.
Connect both parts by pressing. Must be sewn to the material.
Two SNAP stackables need to be combined for one fastener.

NOTES

Disclaimer

The manufacturer of the end products in which FIDLOCK fasteners are used, bears the responsibility for thoroughly testing that the FIDLOCK products are suitable for the intended applications. FIDLOCK assumes no responsibility for damage caused by misuse, modification or repairs. All ultimate load specifications in sales catalogues are voluntary, non-binding specifications and cannot replace the test conducted by the end product manufacturer in which the manufacturer tests the adequacy of the FIDLOCK products for their intended application. The load capacities apply to freshly produced, black products. Load capacities may vary depending on age and colour. Unless otherwise specified, the products will be sold in their original colour (black).

Patents

All product families and the product belonging to them are protected by various patents and patent applications worldwide.

FIDLOCK is a registered trademark. Mistakes, misprints and technical changes reserved. Colours may deviate from the originals due to the printing process.

Weights

The product weights in the technical data are rounded to full grams for calculation purposes. Please contact info@fidlock.com if you require detailed information.

