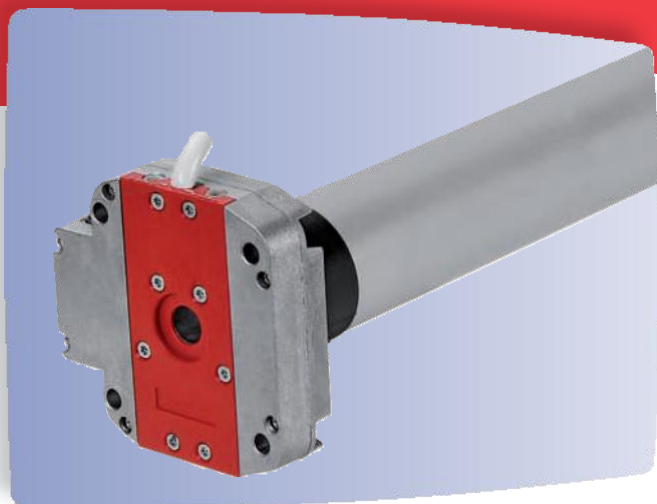


HIGH QUALITY, RELIABLE MOTORISATION WITH MANUAL OVERRIDE SYSTEM FOR THE REMOTE CONTROL OF ROLLER SHUTTERS & FOLDING ARM AWNINGS



SIMU T5 DMI Hz01 240 VOLT TUBULAR MOTOR WITH MANUAL OVERRIDE AND INTEGRATED RADIO RECEIVER



INTELLIGENT, POWERFUL, RELIABLE, EASILY INTEGRATED AND ALWAYS OPERATIONAL

Completely integrated with SIMU's advanced Hz Radio Remote Control Technology, these powerful and reliable high performance **SIMU T5 DMI Hz01** tubular motors are ideal for motorising applications that need to be operational during mains power failure. Ideal for use in roller shutter applications for doorways and access points because of its integrated manual override system, it has the added comfort and flexibility of being able to be controlled wirelessly via remote control when power is available. The T5 DMI Hz01 is also ideal for awning applications. In the event of high winds and in a power failure the system can be retracted manually. With its compact head design the T5 DMI Hz01 is easily integrated and provides easy access to the limit setting screws (accessible on 2 sides of the motor head for easy and quick end-limit adjustments).

TWO LIFTING CAPACITIES

The high performance T5 DMI Hz01 is available in 2 different torques (25Nm, 50Nm).

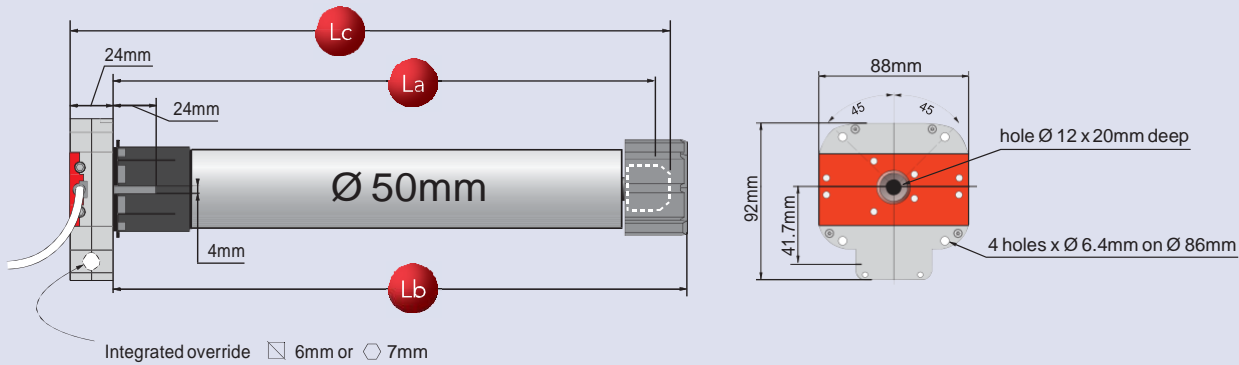
STURDY, INTEGRATED, POWERFUL, QUALITY CONSTRUCTION

SIMU tubular motors are made in France and are reputed for high quality and reliability. Other features include:

- Integrated SIMU Hz radio remote control receiver
- Manual override in case of power-failure
- Safe and secure rolling code radio system with over 16 million possible combinations.
- Powerful radio remote control range of up to 200m in free field and 20m between 2 concrete walls.
- Heavy duty, easy to set and accurate manual end-limit system with integrated manual override system.
- Thermal cut-out protection system
- Suitable for wide range of adaptations and tube sizes.



MOTOR DIMENSIONS



- La** : Length between the end and the drilling point of the tube
- Lb** : Adapted motor size in the tube
- Lc** : Total motor length

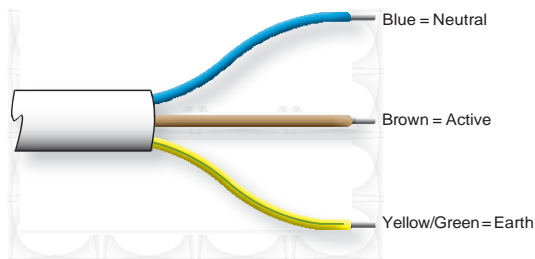
MODEL NUMBERS & TECHNICAL SPECIFICATIONS

| Product Code | Model Number | Torque (Nm) | Speed (rpm) | Power (W) | Current (A) | La (mm) | Lb (mm) | Lc (mm) |
|--------------|---------------------|-------------|-------------|-----------|-------------|---------|---------|---------|
| 30-900-525M | T5 DMI Hz01 - 25/17 | 25 | 17 | 170 | 0.80 | 714 | 726 | 742 |
| 30-900-550M | T5 DMI Hz01 - 50/12 | 50 | 12 | 240 | 1.10 | 754 | 766 | 782 |

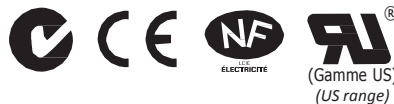
GENERAL T5 DMI Hz01 TECHNICAL SPECIFICATIONS

| | |
|--|--|
| Power supply | 240 Volts – 50 Hz |
| Thermal cut-out | 4 minutes |
| Progressive end-limit switch capacity | 28 turns |
| Protection index | IP 44 |
| Ambient temperature of use | From -10°C to +40°C and exceptionally: from -20°C to +70°C |
| Power supply cable | 230V - 3 x 0.75mm ² wires - White HO5 VVF - 2.5m length |
| Radio frequency | 433.42 MHz |
| Secure communication | Thanks to “Rolling Code” encoding technology which enables more than 16 million combinations |
| Range Depending on environment and radio pollution | - 200m in free field - 20m between two reinforced concrete walls |
| Base diameter for round tube | Ø50x1.5mm |
| Motor head thickness | 24mm maximum |
| DMI reduction ratio | 27/1 |

MOTOR WIRING CONNECTIONS



INTERNATIONAL STANDARDS



Installation Note: Motors must be wired by a certified electrician. Horizontal mount only. Mounting brackets, crowns and driving wheels to suit tube size must be used with this motor.
General Note: All photos for illustrative purposes only. Technical specifications are correct at time of printing and may change without notice.

Distributed in New Zealand by:



Rainbow Shade Products NZ (2008) Ltd

413 Queen Street West, Hastings 4122
Free phone: 0508 665 665
e-mail: rainbowshade@xtra.co.nz
www.rainbowshade.co.nz



